

**SPECIFICATIONS:**

- ELECTRICAL CHARACTERISTICS:
  - 1-1. RATING: 24V 2A
  - 1-2. CONTACT RESISTANCE: 30m Ω MAX (INITIAL)
  - 1-3. DIELECTRIC WITHSTANDING VOLTAGE: 500V AC FOR ONE MINUTE
  - 1-4. INSULATION RESISTANCE: 100M Ω MIN. MEASURED BY 500 VDC
- MECHANICAL CHARACTERISTICS:
  - 2-1. INSERTION FORCE : 3.0 Kgf Max.
  - 2-2. WITHDRAWAL FORCE : 0.3~3.0 Kgf
- LIFE TEST: 5,000 CYCLES MIN.
- OTHER GENERAL SPEC. TO REFER "2DC-S106-107H SPEC".
- GREEN PRODUCT IDENTIFICATION MARK ON JACK:
- GREEN PRODUCT IDENTIFICATION LABEL ON PACKAGING:
- FOR HAND SOLDERING LEAD-FREE PROCESS.
- PRINTED DATE CODE "MMDD" ON TOP OF CONNECTOR.

9. THE PANEL'S ID MUST BE GREATER THAN THE PLUG'S OD WHICH MUST HAVE A DIFFERENCE OF LESS THAN OR EQUAL TO 0.5 mm. (AS SHOWN IN FIGURE 1.)

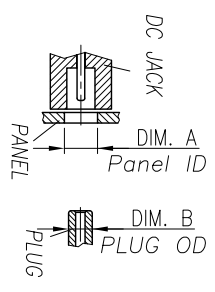


FIGURE 1

NO	DESCRIPTION	QTY	MATERIAL	PLATING & COLOR
F	SHIELDING	1	COPER ALLOY 0.35t	Ni: 60u" Min
E	CENTER PIN	1	BRASS BAR	Ni: 60u" Min
D	TERMINAL	1	COPER ALLOY 0.3t	4g 20u" MIN OVER Ni: 20u"
C	SHUNT TERMINAL	1	COPER ALLOY 0.3t	4g 20u" MIN OVER Ni: 20u"
B	TIP SPRING	1	COPER ALLOY 0.3t	4g 20u" MIN OVER Ni: 20u"
A	BODY	1	HIGH TEMP.THERMOPLASTIC UL 94V-0	BLACK

UNLESS OTHERWISE SPECIFIED TOLERANCES

TITLE	DC POWER JACK
DWM	Ron
CHKD	Sky
APVD	Lussen
PART NO.	2DC-S106-107H
SCALE:	3/1
UNIT:	mm
SHEET:	1 OF 1
REV:	A

CUSTOMER COPY

REV.	ECN NO OR DESCRIPTION	REVISED	DATE
A	PDR NO. T120823-9A	Ron	2013.01.22