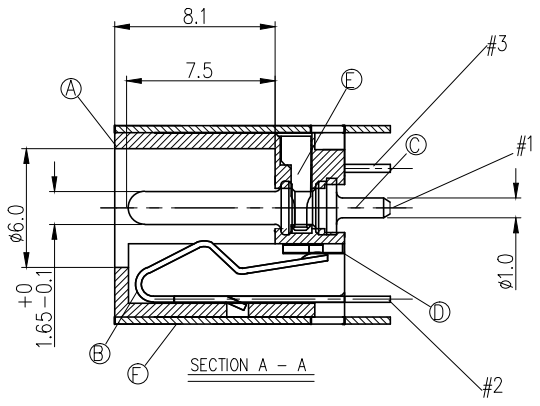
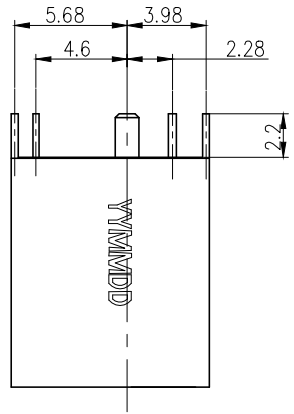
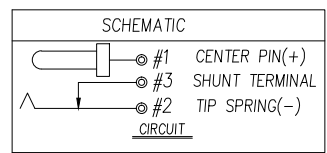
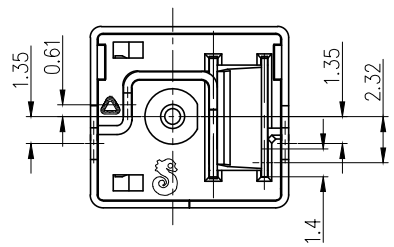
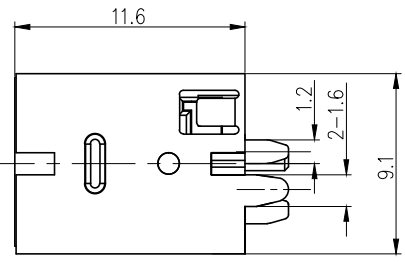
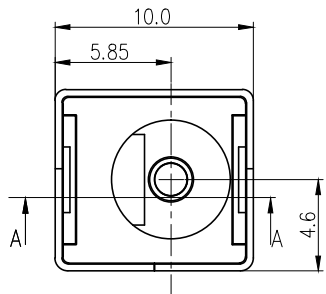


REV.	ECN NO OR DESCRIPTION	REVISED	DATE
A	PDR NO.: T170215-1A	YUREN	2017.09.28

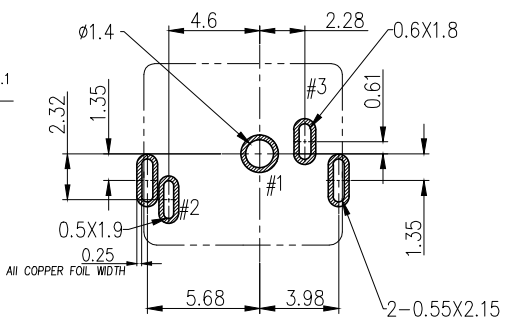
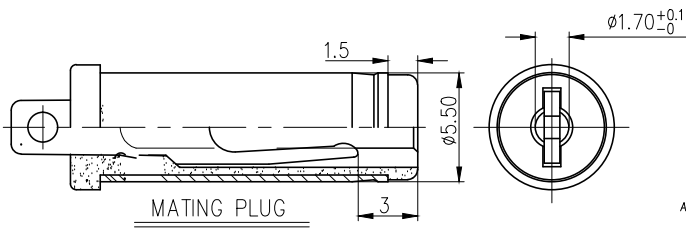


- SPECIFICATIONS:
- ELECTRICAL CHARACTERISTICS:
    - RATING: 20V 7A
    - CONTACT RESISTANCE: 30mΩ MAX.
    - DIELECTRIC WITHSTANDING VOLTAGE: 500V AC FOR ONE MINUTE.
    - INSULATION RESISTANCE: 100MΩ MIN. MEASURED BY 500 VDC
  - MECHANICAL CHARACTERISTICS:
    - INSERTION FORCE : 3.0 kgfMax.
    - WITHDRAWAL FORCE : 0.5~3.0kgf
  - TEMPERATURE RISE CAN'T EXCEE 30°C
  - LIFE TEST: 5,000 CYCLES MIN.
  - TO CONFORM TO SINGATRON HAZARDOUS SUBSTANCE FREE SPEC.
  - GREEN PRODUCT IDENTIFICATION MARK ON JACK:
  - GREEN PRODUCT IDENTIFICATION LABEL ON PACKAGING: **G.P. PASS**
  - FOR WAVE SOLDERING LEAD-FREE PROCESS.
  - PRINTED DATE CODE "YYMMDD" ON TOP OF CONNECTOR.

DD: DAY  
 MM: MONTH  
 YY: YEAR



YY MM DD  
 DD: DAY  
 MM: MONTH  
 YY: YEAR

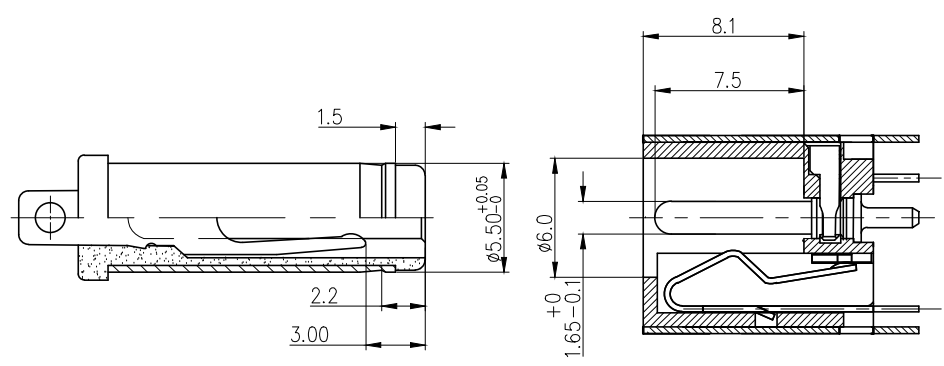


RECOMMENDED P.C.B LAYOUT  
 (TOP VIEW)(TOLERANCE: ±0.05)

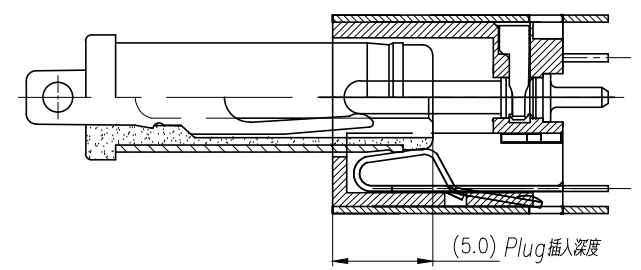
F	SHIELD	1	COPPER ALLOY 0.35T	可鍍Ni 60u"Min
E	TERMINAL	1	HIGHT TEMP.THERMOPLASTIC UL94V-0	BLACK
D	SHUNT TERMINAL	1	COPPER ALLOY 0.4T	Ag20u"Min,Ni60u"Min.
C	CENTER PIN	1	BRASS BAR	Ag20u"Min,Ni60u"Min.
B	TIP SPRING	1	COPPER ALLOY 0.3T	Ag20u"Min,Ni60u"Min.
A	BODY	1	HIGHT TEMP.THERMOPLASTIC UL94V-0	BLACK
NO	DESCRIPTION	QTY	MATERIAL	PLATING & COLOR

UNLESS OTHERWISE SPECIFED TOLERANCES		Singatron Enterprise Co., Ltd. 信音企業股份有限公司	
DECIMALS:	ANGLES:	TITLE DC JACK	
X : ±0.5	X : ±2°	DWN	YUREN PART NO. 2DC-S228Q300H
X.X : ±0.3	X.X : ±1°	CHKD	SKY SCALE 1:1 UNIT: mm
X.XX : ±0.2		APVD	LUSSEN SIZE: A3 SHEET: 10F1 REV: A
CUSTOMER COPY			

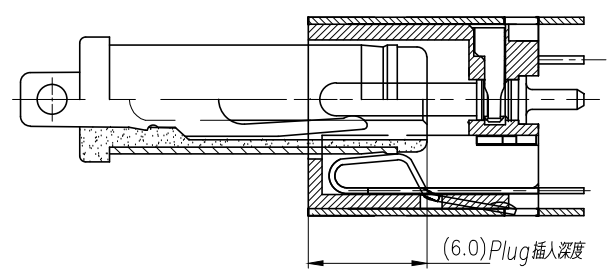
REV.	ECN NO OR DESCRIPTION	REVISED	DATE
A	PDR NO.: T170215-1A	YUREN	2017.09.28



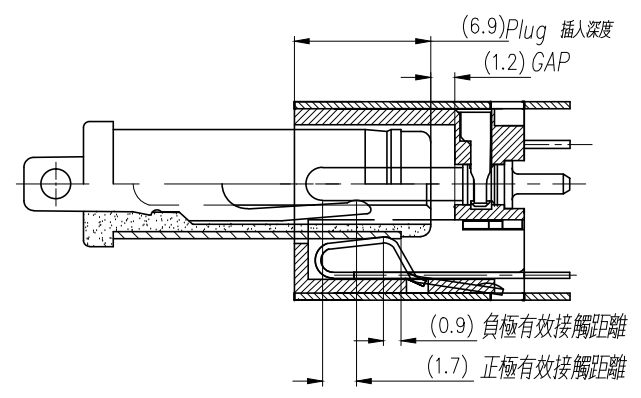
1. 正極接觸狀態



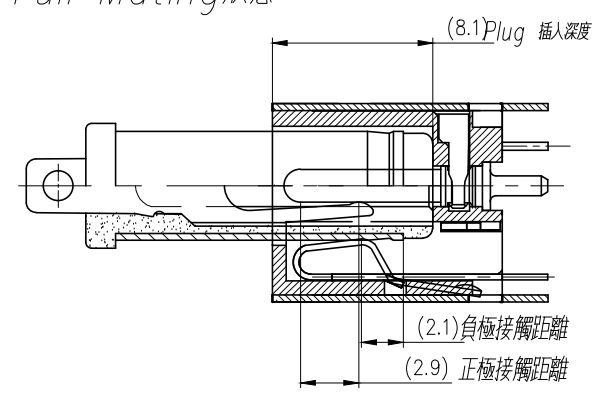
2. 負極接觸狀態



3. Plug Lock 狀態



4. Plug Full Mating 狀態



UNLESS OTHERWISE SPECIFIED TOLERANCES		Singatron Enterprise Co., Ltd. 信音企業股份有限公司	
DECIMALS:	ANGLES:	TITLE	MATING DRAWING
X : ±0.5	X : ±2°	DWN	YUREN PART NO. 2DC-S228Q300H
X.X : ±0.3	X.X : ±1°	CHKD	SKY SCALE: 3:1 UNIT: mm
X.XX : ±0.2		APVD	LUSSEN SIZE: A3 SHEET: 2 OF 2 REV:A
CUSTOMER COPY			