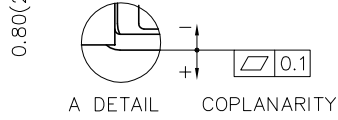
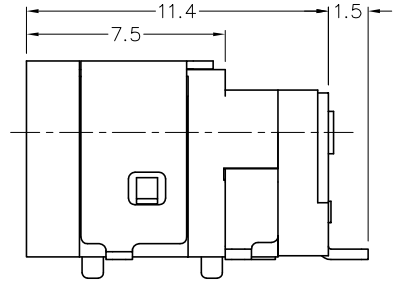
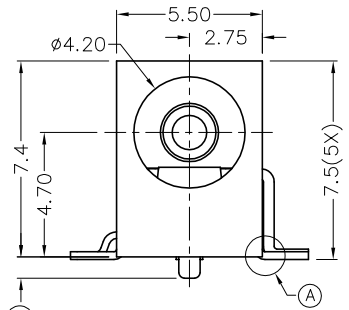
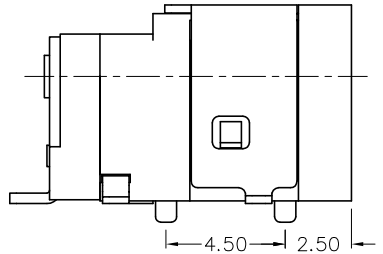
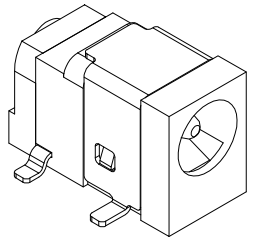


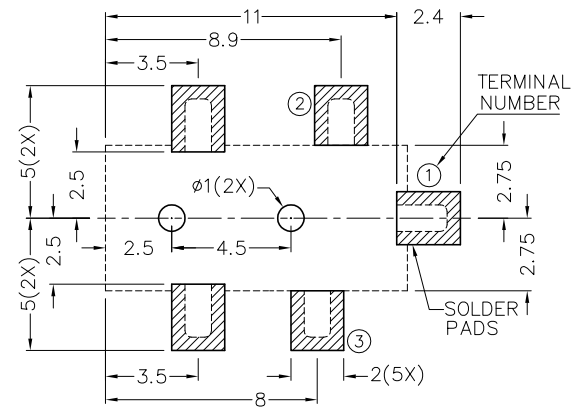
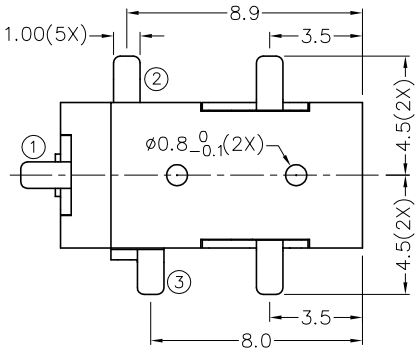
1 2 3 4 5 6 7 8

ZONE	SYMBOL	REVISION	APPROVAL	DATE

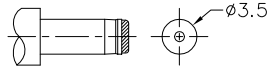
RoHS  
Compliant



- \* MATERIAL
- CENTER PIN : COPPER
  - TERMINAL 1 : BRASS
  - TERMINAL 2 : COPPER ALLOY
  - TERMINAL 3 : BRASS
  - SHIELD : COLD ROLLED STEEL
  - HOUSING : HIGH TEMP. PLASTIC
  - COVER : HIGH TEMP. PLASTIC



RECOMMENDED PCB LAYOUT  
TOLERANCE: ±0.05  
(TOP VIEW)



DC MATE PLUG

SCHEMATIC	
CENTER PIN	ø1.3mm

TOLERANCE UNLESS 0.0±0.2  
0.00±0.1  
OTHERWISE SPECIFIED: 0.000±0.05

Singatron Enterprise Co., Ltd.				
TITLE	HIGH CURRENT SMD DC POWER SOCKET			
DWN	J.CH.OU	PART NO.	2DC-T050DHS-130	
CHKD	H.L.TAN	SCALE	1:1	UNIT: mm
APVD	fy	SIZE	A3	SHEET: 1 OF 1 REV: 1.0
<b>CUSTOMER COPY</b>				

7-10-2016

1 2 3 4 5 6 7 8