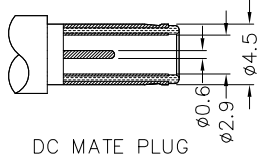
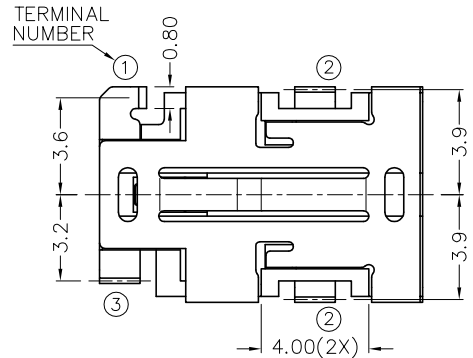
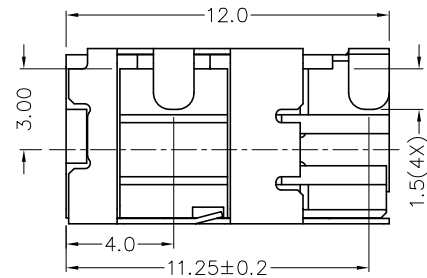
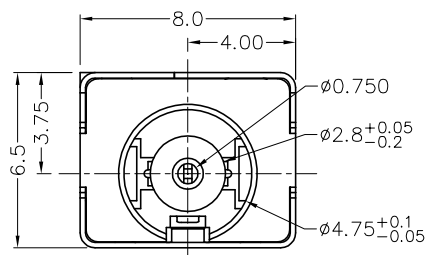
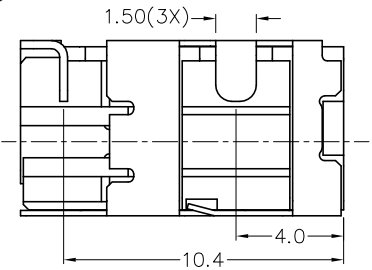
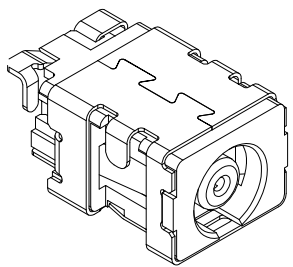


RoHS
Compliant

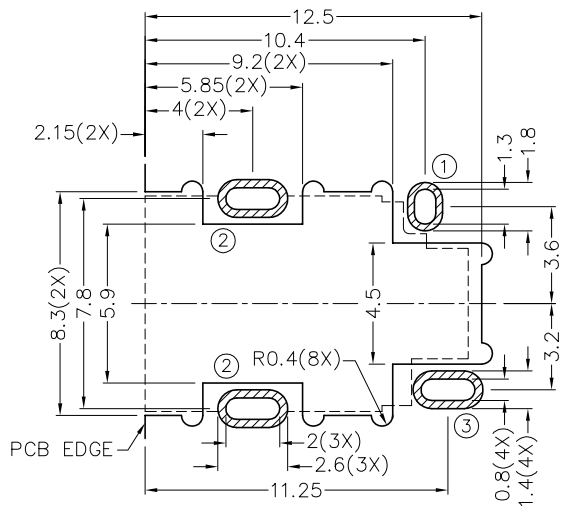
ZONE	SYMBOL	REVISION	APPROVAL	DATE



* MATERIAL

- TERMINAL 1 : COPPER ALLOY
- TERMINAL 2 : COPPER ALLOY
- TERMINAL 3 : COPPER ALLOY
- HOUSING : HIGH TEMP. PLASTIC

MODEL NO.	2DC-T108DH
SCHEMATIC	3(V+)
	1(S)
	2(V-)



TOLERANCE UNLESS 0.0±0.2
0.00±0.1
OTHERWISE SPECIFIED: 0.000±0.05

Singatron Enterprise Co., Ltd.				
TITLE	HIGH CURRENT SMD DC POWER SOCKET			
DWN	H.Q.ZHOU	PART NO.	2DC-T108DH	
CHKD	T.Y.LI	SCALE	1:1	UNIT: mm
APVD	↑↑	SIZE	A3	SHEET: 1 OF 1 REV: 1.0
CUSTOMER COPY				