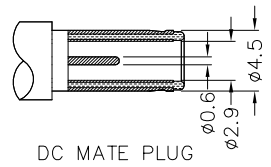
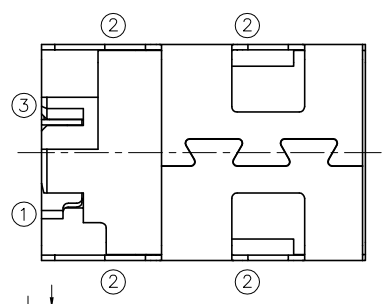
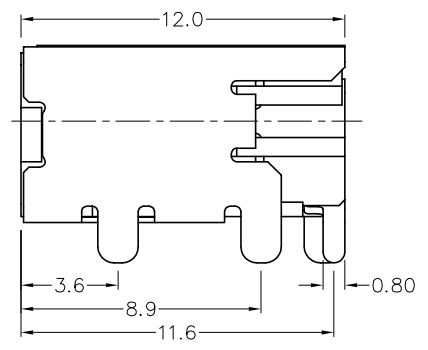
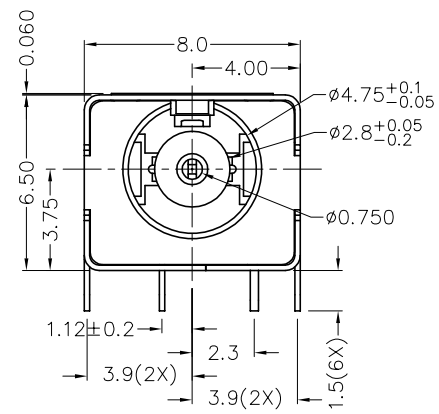
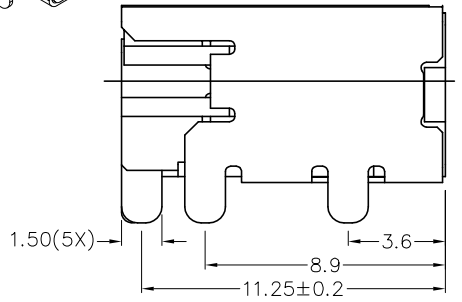
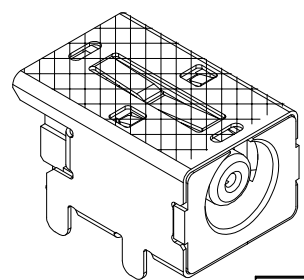


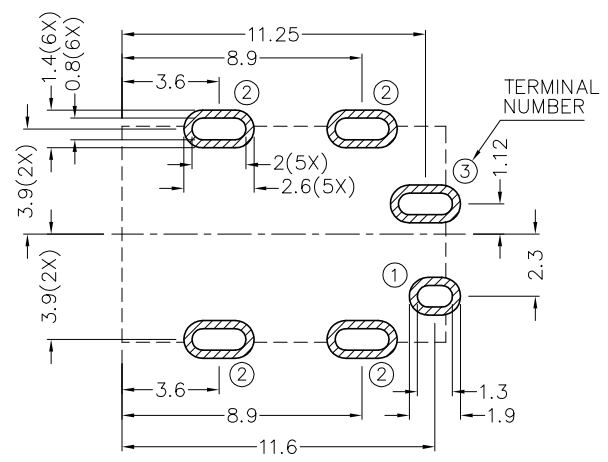
RoHS
Compliant

ZONE	SYMBOL	REVISION	APPROVAL	DATE



* MATERIAL
 TERMINAL 1 : COPPER ALLOY
 TERMINAL 2 : COPPER ALLOY
 TERMINAL 3 : COPPER ALLOY
 HOUSING : HIGH TEMP. PLASTIC
 MYLAR : POLYIMIDE

MODEL NO.	2DC-T108HT1
SCHEMATIC	3(V+)
	1(S)
	2(V-)



RECOMMENDED PCB LAYOUT
 TOLERANCE: ±0.05
 (TOP VIEW)

TOLERANCE UNLESS 0.0±0.2
 0.00±0.1
 OTHERWISE SPECIFIED: 0.000±0.05

Singatron Enterprise Co., Ltd.				
TITLE	HIGH CURRENT DC POWER SOCKET			
DWN	H.Q.ZHOU	PART NO.	2DC-T108HT1	
CHKD	T.Y.LI	SCALE	1:1	UNIT: mm
APVD	↑↑	SIZE	A3	SHEET: 1 OF 1 REV: 1.0
CUSTOMER COPY				

16-11-2016