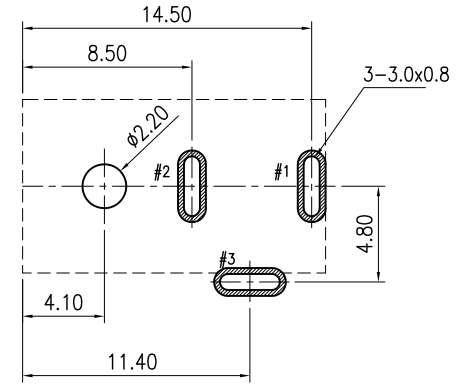
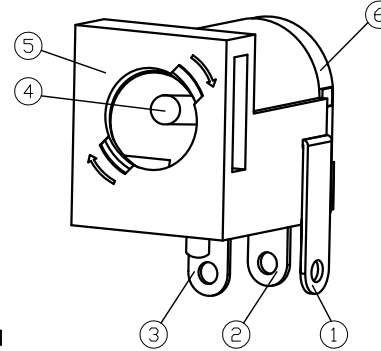
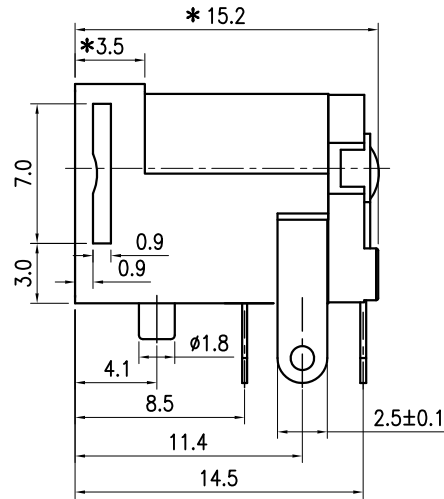
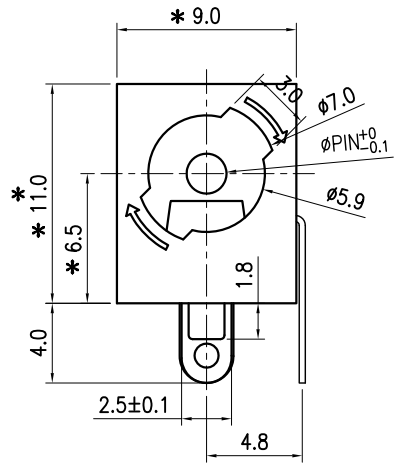


“*” : INDICATES THE KEY DIMENSIONS [“*”為重點尺寸]

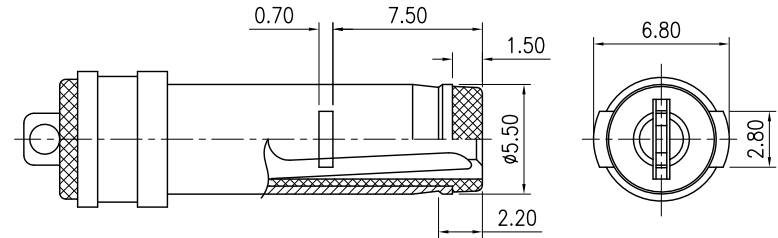
* REVISIONS

LTR	DESCRIPTION	DATE	REVISED	APPROVED



Recommend of PC Board Holes
Tolerance : ±0.05(Top view)

CAT. NO.	PIN	SCHEMATIC
2DC-W020-159A	φ2.0	
2DC-W020-159B	φ2.5	



DC MATE PLUG REF

LEAD FREE

LTR	PART NAME	QTY	MATERIAL	REMARK
6	COVER	1	PBT 4815	UL-94V0(BLACK)
5	HOUSING	1	PBT 4815	UL-94V0(BLACK)
4	PIN	1	BRASS	Ni PLATED
3	SPRING	1	BRONZE	Sn PLATED
2	FLAT PIECE	1	BRASS	Sn PLATED
1	CURVE PIECE	1	BRASS	Sn PLATED

Notes:

- Electrical Characteristics:
 - Rating : DC 20 V 5 A ;
 - Contact Resistance: 50mΩ Max.(Initial), 100mΩ Max.(Final) After test: ≤50mΩ ;
 - Dielectric Withstanding Voltage: 500V AC for One Minute ;
 - Insulation Resistance: 100MΩ Min. Measured By 500 VDC;
- Mechanical Characteristics:
 - Plug Insertion Force 0.3~3.0Kgf (initial), 0.3~3.0Kgf (Final) life test;
 - Plug Extraction Force: 0.3~3.0Kgf (initial), 0.3~3.0Kgf (Final) life test;
- Durability Test: 5,000 Cycles min;
- Operating temperature: -25°C ~ +70°C;
- Soldering Heat Resistance Wave soldering 230°C;
- Plug Interface Dimensions Conform To EIAJ RC-5321 Spec;
- Packaging:

-TOLERANCES- UNLESS OTHERWISE SPECIFIED	
公差	
X.X ±0.20	X.X" ±3"
X.XX ±0.15	X.XX" ±1"
X.XXX ±0.10	

Singatron Enterprise Co., Ltd.

TITLE	DC POWER JACK 帶鎖扣		
DWN	GAOWEI	PART NO.	2DC-W020-159_
CHKD	2021.11.11	SCALE	1:1 UNIT: mm
APVD	LUJIAO	SIZE: A3	SHEET: 1 OF 1 REV: 001

CUSTOMER COPY