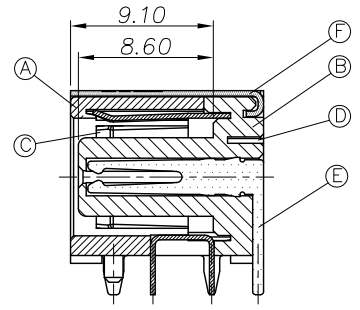
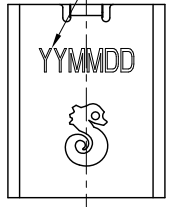
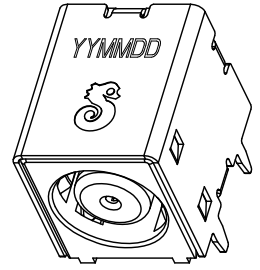


REV.	ECN NO OR DESCRIPTION	REVISED	DATE
C	ECN NO: S091210	Tom	2009.12.07
D	ECN NO: S120932	Danfeng	2012.09.27
E	ECN NO: S130308	SEAN	2013.05.13

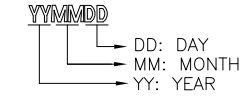
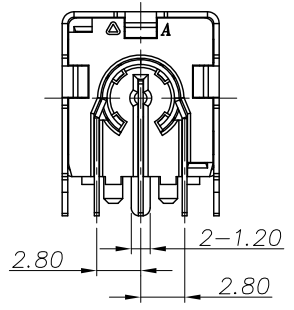
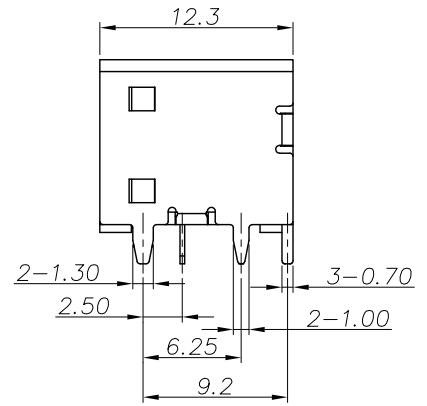
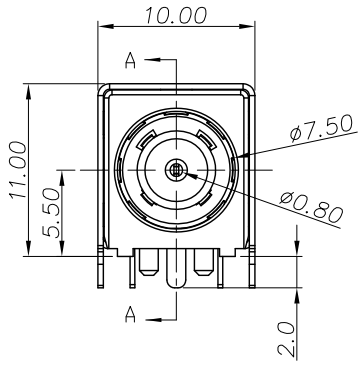
DATE CODE



SECTION A-A  
SCALE 1:1

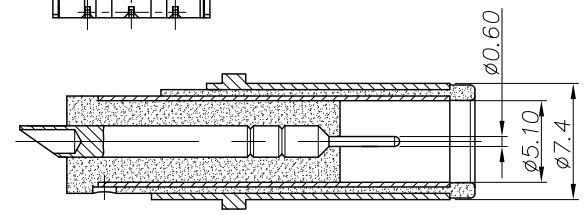
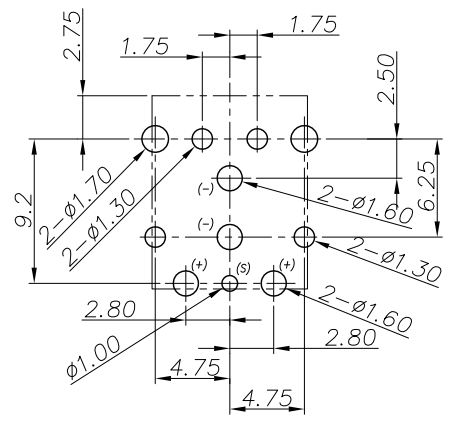
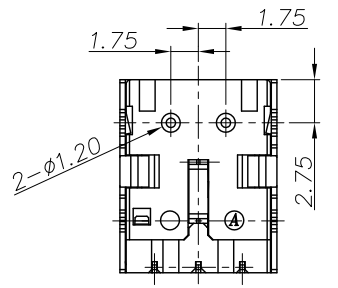


- NOTE:
- ELECTRICAL CHARACTERISTICS:
    - 1-1. RATING: 20V 10A
    - 1-2. CONTACT RESISTANCE: 30mΩ MAX.(INITIAL)
    - 1-3. DIELECTRIC WITHSTANDING VOLTAGE: 500V AC FOR ONE MINUTE.
    - 1-4. INSULATION RESISTANCE: 100MΩ MIN. MEASURED BY 500 VDC
  - MECHANICAL CHARACTERISTICS:
    - 2-1. INSERTION FORCE : 3.0 KGF MAX
    - 2-2. WITHDRAWAL FORCE : 0.35 KGF MIN
  - LIFE TEST: 5,000 CYCLES MIN.
  - OTHER GENERAL SPEC. TO REFER "2DC1003-000111 SPEC".
  - TO CONFORM TO SINGATRON HAZARDOUS SUBSTANCE FREE SPEC.
  - GREEN PRODUCT IDENTIFICATION MARK ON JACK:
  - GREEN PRODUCT IDENTIFICATION LABEL ON PACKAGING: **G.P. PASS**
  - FOR REFLOW SOLDERING LEAD-FREE PROCESS.
  - PRINTED DATE CODE "YYMMDD" ON TOP OF CONNECTOR.



SCHEMATIC

	⊙#1 SPRING(+)
	⊙#3 SIGNAL(S)
	⊙#2 SPRING(-)



MATING PLUG: OD φ7.4 ; ID φ0.6  
Tolerance: ±0.05

RECOMMENDED P.C.B LAYOUT (t=1.6mm)  
TOP VIEW (Tolerance: ±0.05)

F	DESCRIPTION	QTY	MATERIAL	PLATING & COLOR
F	SHELL	1	BRASS 0.35t	NICKEL(60u"Min.) PLATING
E	SIGNAL (S)	1	COPPER ALLOY 0.3t	GOLD FLASH(1~3u") PLATING
D	SPRING (+)	1	COPPER ALLOY 0.3t	GOLD FLASH(1~3u") PLATING
C	SPRING (-)	1	COPPER ALLOY 0.3t	GOLD FLASH(1~3u") PLATING
B	COVER	1	HIGH TEMP. THERMOPLASTIC UL 94V-0	BLACK COLOR
A	HOUSING	1	HIGH TEMP. THERMOPLASTIC UL 94V-0	BLACK COLOR

UNLESS OTHERWISE SPECIFIED TOLERANCES

Singatron Enterprise Co., Ltd.  
信音企業股份有限公司

DECIMALS:	ANGLES:	TITLE	DC POWER JACK		
X : ±0.5	X : ±2°	DWN SEAN	PART NO. 2DC1003-000111		
X.X : ±0.3	X.X : ±1°	CHKD CERRY	SCALE: 3:1	UNIT: mm	
X.XX : ±0.2		APVD MAX	SIZE: A3	SHEET 1:1 OF	REV: E
CUSTOMER COPY					