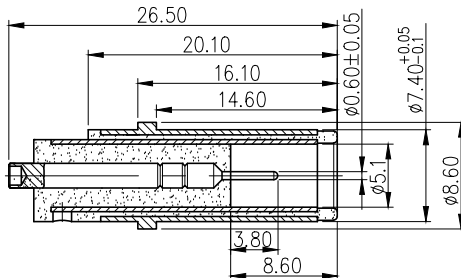
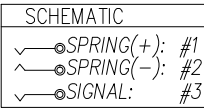
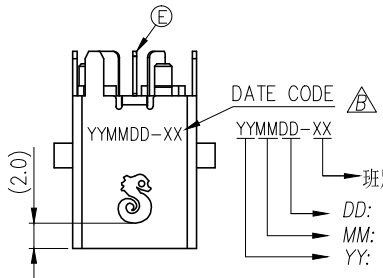
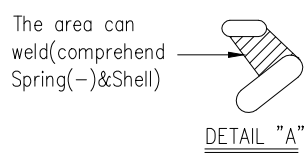
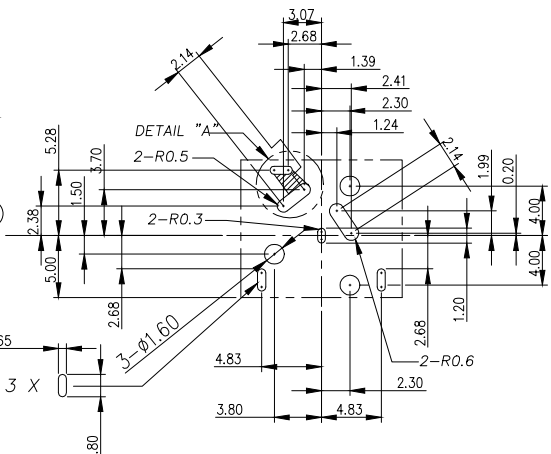
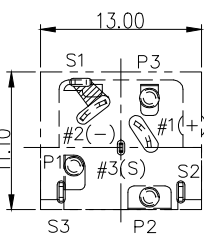
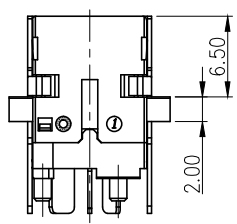
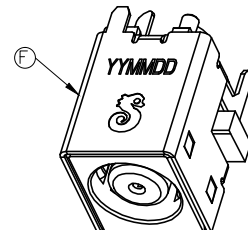
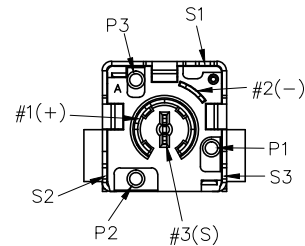
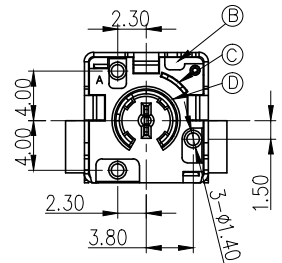
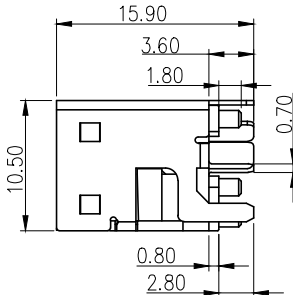
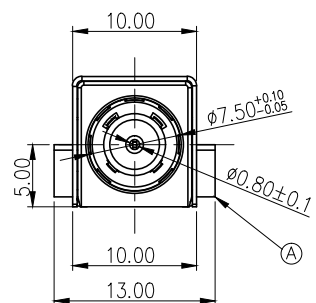


REV.	ECN NO OR DESCRIPTION	REVISED	DATE
A	PDR NO.C130801-1A	Springwu	2013.10.08
B	ECN NO.S131157	Springwu	2014.4.14



MATING PLUG: OD $\phi 7.4$; ID $\phi 0.60$
(TOLERANCE: ± 0.05)

- SPECIFICATIONS:
- ELECTRICAL CHARACTERISTICS:
 - RATING: 20V 13A
 - CONTACT RESISTANCE: 20m Ω MAX.(INITIAL)
 - DIELECTRIC WITHSTANDING VOLTAGE: 150V AC FOR ONE MINUTE.
 - INSULATION RESISTANCE: 100M Ω MIN. MEASURED BY 500 VDC
 - MECHANICAL CHARACTERISTICS:
 - INSERTION FORCE : 3.0 KGF Max.
 - WITHDRAWAL FORCE : 0.35 KGF Min.
 - LIFE TEST: 5,000 CYCLES MIN.
 - OTHER GENERAL SPEC. TO REFER "2DC1003 SERIES SPEC".
 - TO CONFORM TO SINGATRON HAZARDOUS SUBSTANCE FREE SPEC.
 - HALOGEN FREE PRODUCT IDENTIFICATION MARK ON PRODUCT:
 - HALOGEN FREE PRODUCT IDENTIFICATION LOGO ON THE PACKAGING:
 - FOR REFLOW SOLDERING LEAD-FREE PROCESS.
 - TEMPERATURE RISE CAN'T EXCEED 30 °C



Recommended PCB Layout
<TOP VIEW>TOLERANCE: ± 0.05
(PCB THICKNESS: 1.5mm)

NO	DESCRIPTION	QTY	MATERIAL	PLATING & COLOR
F	SHELL	1	BRASS 0.35t	NICKEL(60u"Min.) PLATING
E	SIGNAL	1	COPPER ALLOY 0.3t	GOLD FLASH ON CONTACT: SN 100u" ON SOLDER: ALL OVER Ni 50u" MIN.
D	SPRING (+)	1	COPPER ALLOY 0.3t	GOLD FLASH OVER
C	SPRING (-)	1	COPPER ALLOY 0.3t	Ni 50u" MIN.
B	COVER	1	HIGH TEMP. THERMOPLASTIC UL 94V-0	BLACK
A	HOUSING	1	HIGH TEMP. THERMOPLASTIC UL 94V-0	BLACK

UNLESS OTHERWISE SPECIFIED TOLERANCES		Singatron Enterprise Co., Ltd. 信音企業股份有限公司	
DECIMALS:	ANGLES:	TITLE: DC POWER JACK	
X : ± 0.5	X : $\pm 2^\circ$	DWN	Springwu PART NO.2DC1003-006313F
X.X : ± 0.3	X.X : $\pm 1^\circ$	CHKD	Sky SCALE 4:1 UNIT: mm
X.XX : ± 0.2		APVD	Lussen SIZE: A3 SHEET: 1 OF 1 REV: B
CUSTOMER COPY			