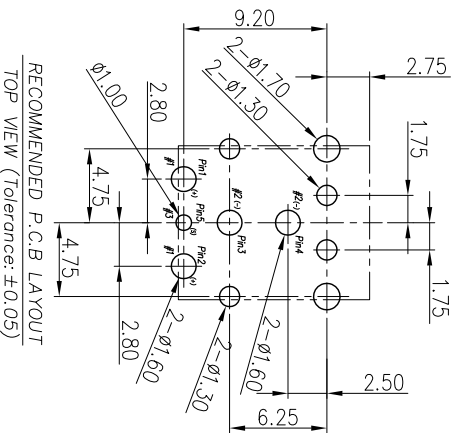
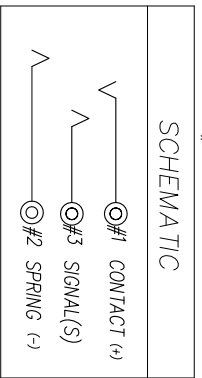
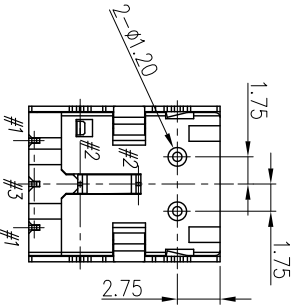
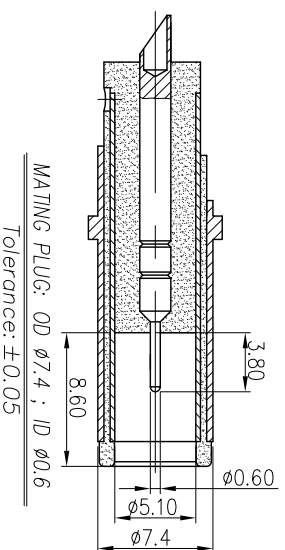
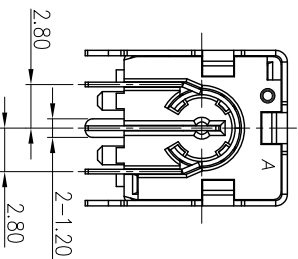
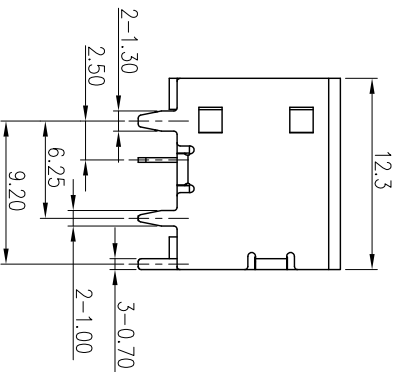
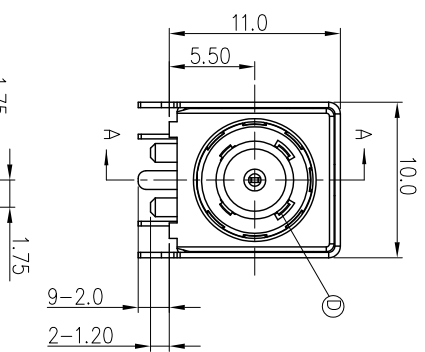


1. ELECTRICAL CHARACTERISTICS:
- 1-1. RATING: 30V, 10A
 - 1-2. CONTACT RESISTANCE: 20mΩ MAX (INITIAL)
 - 1-3. DIELECTRIC WITHSTANDING VOLTAGE: 150V AC FOR ONE MINUTE.
 - 1-4. INSULATION RESISTANCE: 100MΩ MIN. MEASURED BY 500 VDC
2. MECHANICAL CHARACTERISTICS:
- 2-1. INSERTION FORCE : 3.0 KGF Max.
 - 2-2. WITHDRAWAL FORCE : 0.35 KGF Min.
- 3. LIFE TEST: 5,000 CYCLES MIN.
 - 4. OTHER GENERAL SPEC. TO REFER "2DC1003 SERIES SPEC".
 - 5. TO CONFORM TO SINGATRON HAZARDOUS SUBSTANCE FREE SPEC.
 - 6. HALOGEN FREE PRODUCT IDENTIFICATION MARK ON PRODUCT:
 - 7. HALOGEN FREE PRODUCT IDENTIFICATION LOGO ON PACKAGING:
 - 8. FOR REFLOW SOLDERING LEAD-FREE PROCESS.



F	SHELL	1	BRASS 0.35t	NI 60μMIN
E	SIGNAL (S)	1	COPPER ALLOY 0.3t	Au 50μ ON CONTACT AREA, GOLD FLASH ON SOLDER AREA, ALL OVER NI 50μ
D	CONTACT	1	COPPER ALLOY 0.3t	
C	SPRING	1	COPPER ALLOY 0.3t	
B	COVER	1	HIGH TEMP. THERMOPLASTIC UL 94V-0	BLACK
A	HOUSING	1	HIGH TEMP. THERMOPLASTIC UL 94V-0	BLACK
UNLESS OTHERWISE SPECIFIED TOLERANCES		QTY	MATERIAL	PLATING & COLOR
DECIMALS:		TITLE		
X : ± 0.5	X : $\pm 2^{\circ}$	DC POWER JACK		
X.X : ± 0.3	X.X : $\pm 1^{\circ}$	DWG SEAN PART NO. 2DC1003-012111F		
X.XX : ± 0.2		CHKD CERRY SCALE: 3:1 UNIT: mm		
		APVD MAX SIZE: A3 SHEET: 10F1 REV: C		
CUSTOMER COPY				

Singatron Enterprise Co., Ltd.
信登企業股份有限公司