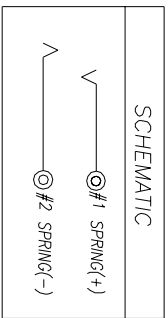
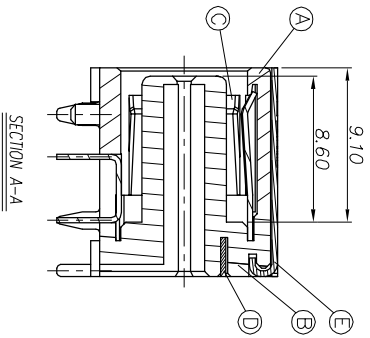
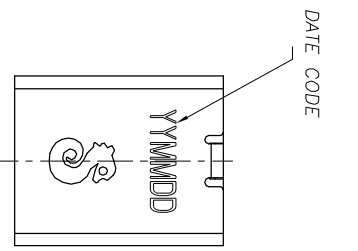
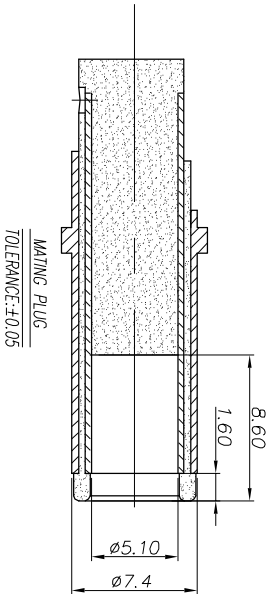
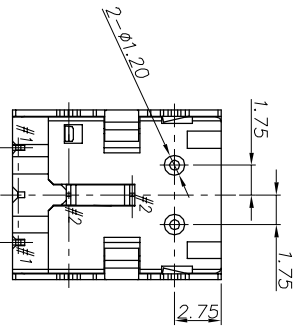
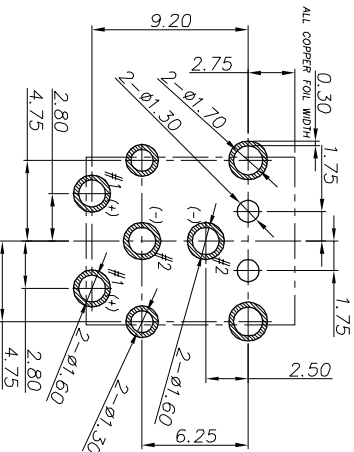
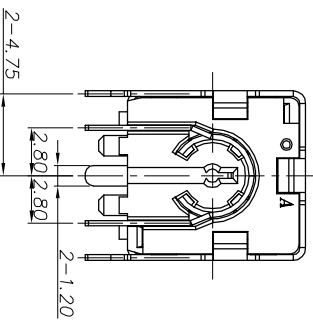
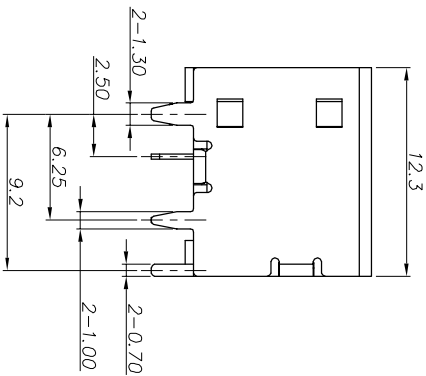
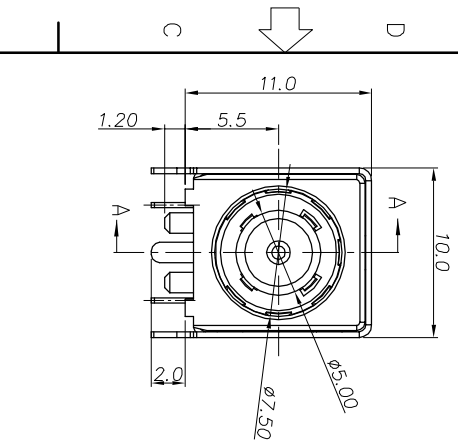


REV	ECN NO OR DESCRIPTION	REVISED	DATE
A	PDR NO.:170801-1A	ZhiJun	2017.8.23



- NOTE:
- ELECTRICAL CHARACTERISTICS:
 - 1-1. RATING: DC 20V 10A
 - 1-2. CONTACT RESISTANCE: $30m\Omega$ MAX.
 - 1-3. DIELECTRIC WITHSTANDING VOLTAGE: 150V AC FOR ONE MINUTE
 - 1-4. INSULATION RESISTANCE: $100M\Omega$ AT 500V DC.
 - MECHANICAL CHARACTERISTICS:
 - 2-1. INSERTION FORCE : 5.0 KGf Max.
 - 2-2. WITHDRAWAL FORCE : 1.5 KGf MIN. (AFTER LIFE TEST 0.8KGf MIN)
 - 2-3. LIFE TEST: 2,000 CYCLES MIN.
 - 2-4. PACKAGING: TAPE&REEL
 - 2-5. TO CONFORM TO SINGATRON HAZARDOUS SUBSTANCE FREE SPEC.
 - 2-6. HALOGEN FREE PRODUCT IDENTIFICATION MARK ON PRODUCT:
 - 2-7. HALOGEN FREE PRODUCT IDENTIFICATION LABEL ON PACKAGING:
 - 2-8. FOR REFLOW SOLDERING LEAD-FREE PROCESS.
 - 2-9. PRINTED DATE CODE "YYMMDD ON TOP OF CONNECTOR.
- (YY: YEAR MM: MONTH DD: DAY)



NO	DESCRIPTION	QTY	MATERIAL	PLATING & COLOR
E	SHELL	1	BRASS 0.35T	Ni60u Min.
D	SPRING (+)	1	COPPER ALLOY 0.3T	SN 80u" OVER NI 50u"
C	SPRING (-)	1	COPPER ALLOY 0.3T	SN 80u" OVER NI 50u"
B	COVER	1	HIGH TEMP THERMOPLASTIC	BLACK
A	HOUSING	1	HIGH TEMP THERMOPLASTIC	BLACK

UNLESS OTHERWISE SPECIFIED TOLERANCES

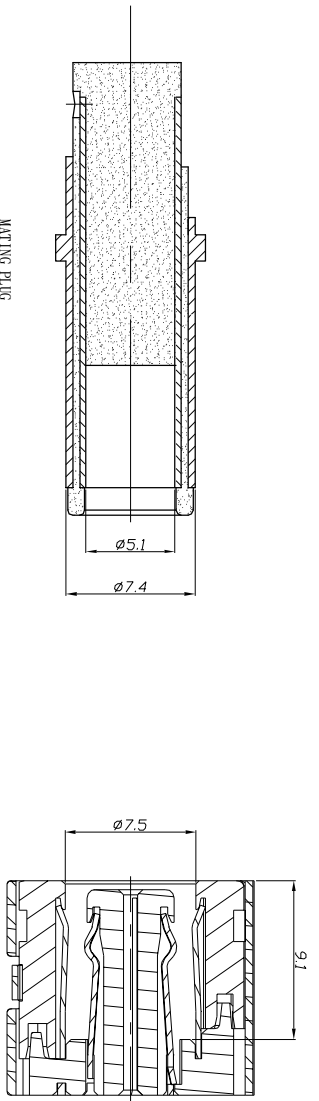


DC POWER JACK

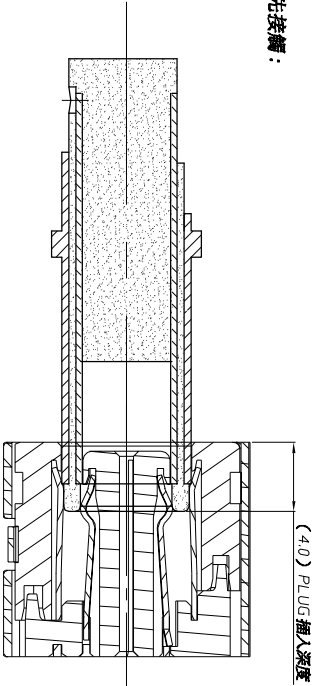
DECIMALS:	ANGLES:	TITLE	PART NO.
X : ±0.5	X : ±2°	DWN	ZhiJun
X.X : ±0.3	X.X : ±1°	CHKD	Sky
X.XX : ±0.2		APVD	Lussen

CUSTOMER COPY

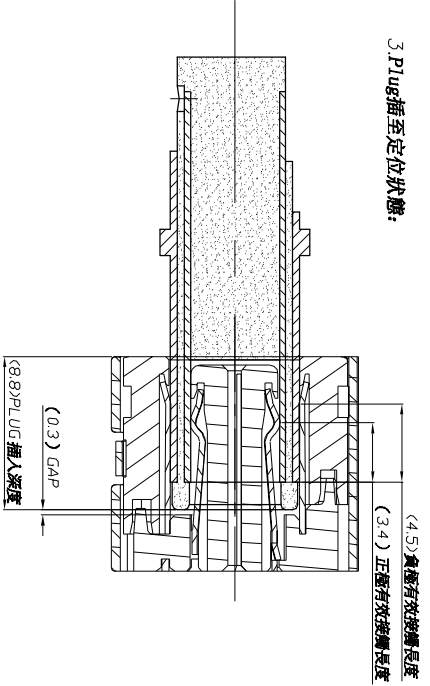
REV.	ECN NO. OR DESCRIPTION	REVISED	DATE
A	PDR NO.:1170801-1A	ZhiJun	2017.8.23



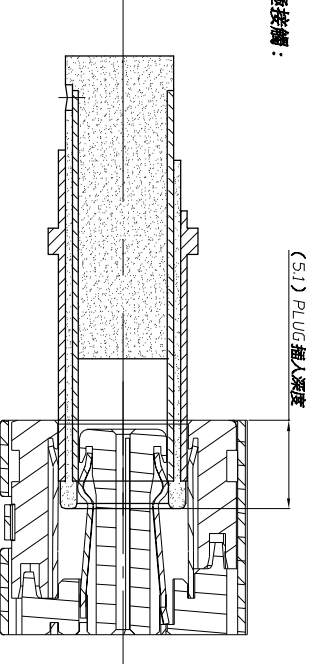
1. 負極先接觸:



3. Plug插至定位狀態:



2. 正極接觸:



DECIMALS:	ANGLES:
X : ±0.5	X : ±2°
X.X : ±0.3	X.X : ±1'
X.XX : ±0.2	

TITLE	MATING
UNLESS OTHERWISE SPECIFIED TOLERANCES	
DWN Zhijun	PART NO.2DC1003-041111F
CHKD Sky	SCALE:4:1
APVD Lussen	UNIT: mm
	SIZE: A3
	SHEET: 2 OF 2
	REV:A

Singatron Enterprise Co., Ltd.
信晉企業股份有限公司

CUSTOMER COPY