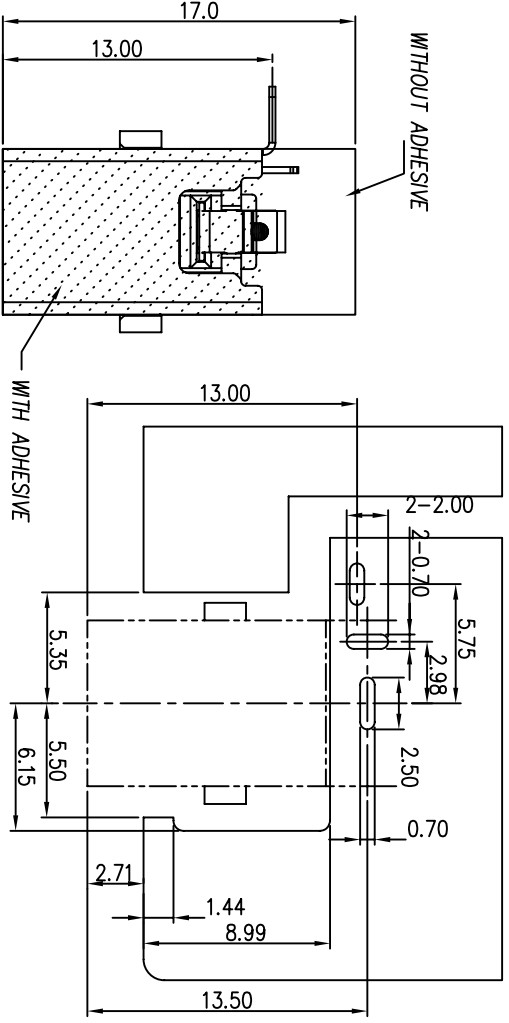
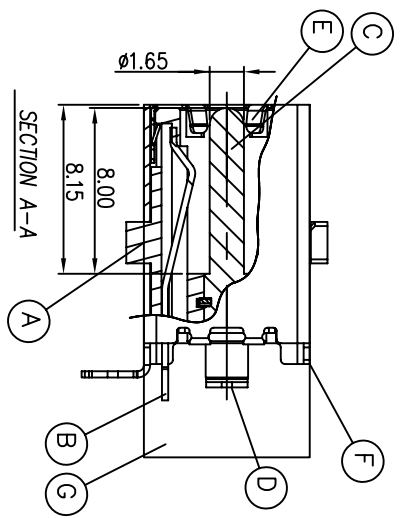
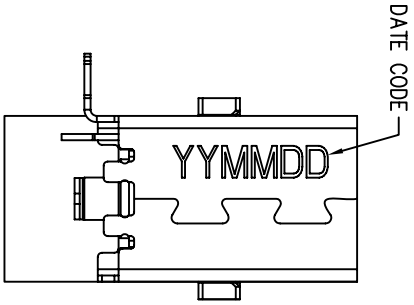
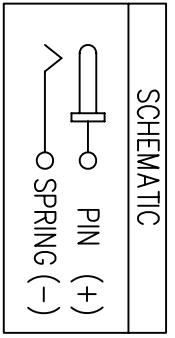
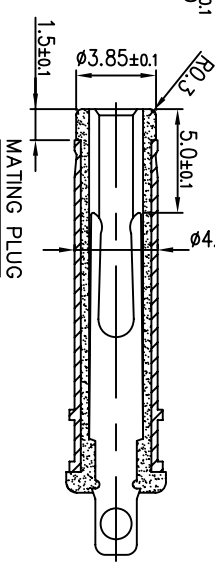
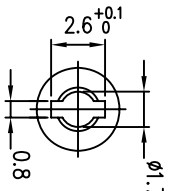
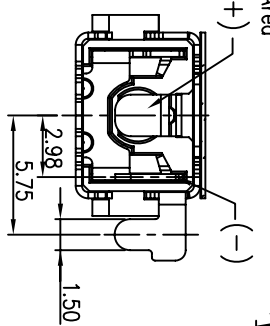
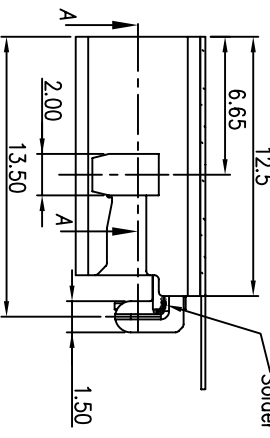
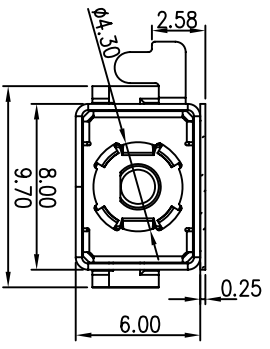


REV	ECN NO OR DESCRIPTION	REVISED	DATE
A	PDR: T090903-4A	Bobbie	2010.02.03

- SPECIFICATIONS:**
- ELECTRICAL CHARACTERISTICS:**
    - 1-1. RATING: 20V 2A
    - 1-2. CONTACT RESISTANCE: 30mΩ MAX.(INITIAL)
    - 1-3. DIELECTRIC WITHSTANDING VOLTAGE: 500V AC FOR ONE MINUTE.
    - 1-4. INSULATION RESISTANCE: 100MΩ MIN. MEASURED BY 500 VDC
  - MECHANICAL CHARACTERISTICS:**
    - 2-1. INSERTION FORCE : 0.5~2.0 KGF
    - 2-2. WITHDRAWAL FORCE : 0.4~1.5 KGF
  3. LIFE TEST: 5,000 CYCLES MIN.
  4. OTHER GENERAL SPEC. TO REFER "2DC1015 SERIES SPEC."
  5. TO CONFORM TO SINGATRON HAZARDOUS SUBSTANCE FREE SPEC.
  6. GREEN PRODUCT IDENTIFICATION MARK ON JACK: (G)
  7. GREEN PRODUCT IDENTIFICATION LABEL ON PACKAGING: (G)
  8. FOR REFLOW SOLDERING LEAD-FREE PROCESS. (LF)



RECOMMENDED PCB LAYOUT(thickness 1.2mm)  
TOP VIEW(TOLERANCE ±0.05)



NO	DESCRIPTION	QTY	MATERIAL	PLATING & COLOR
A	HOUSING	1	THERMOPLASTIC UL 94V-0 (HALOGEN FREE)	BLACK COLOR
B	SPRING	1	COPPER ALLOY	AND TIN-PLATED(200 $\mu$ m.) AT WELD AREA
C	PIN	1	COPPER ALLOY	W/ (500 $\mu$ m.) UNDERPLATED OVER ALL & GOLD FLASH OVER ALL
D	TERMINAL	1	COPPER ALLOY	W/ (500 $\mu$ m.) UNDERPLATED OVER ALL & GOLD FLASH OVER ALL
E	GROUND	1	STAINLESS	N/A
F	SHELL	1	SPCC	W/ (600 $\mu$ m.) PLATED OVER ALL
G	MYLAR	1	PET 3M-467	BLACK COLOR

DECIMALS:	ANGLES:	TITLE
X : ±0.5	X : ±2°	DC POWER JACK
X.X : ±0.3	X.X : ±1°	
X.XX : ±0.2		

DIV	SCALE	PART NO.	REV
CHKD	4:1	2DC1015-010112	1
APVD	A3		REV:A

Singatron Enterprise Co., Ltd.  
信音企業股份有限公司

CUSTOMER COPY