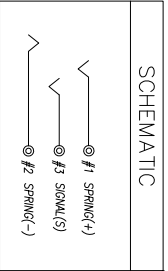
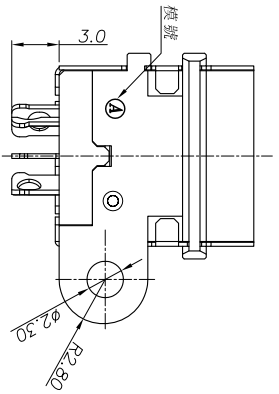
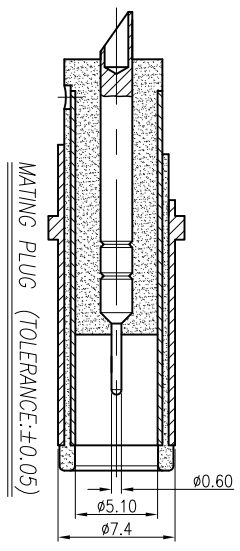


1. ELECTRICAL CHARACTERISTICS:
- 1-1. RATING VOLTAGE: 20V 10A
 - 1-2. CONTACT RESISTANCE: 30mΩ MAX (INITIAL)
 - 1-3. DIELECTRIC WITHSTANDING VOLTAGE: 150V AC FOR ONE MINUTE
 - 1-4. INSULATION RESISTANCE: 100MΩ MIN AT 100V DC AFTER ONE MINUTE
2. MECHANICAL CHARACTERISTICS:
- 2-1. INSERTION FORCE : 3.0 Kgf MAX
 - 2-2. WITHDRAWAL FORCE : 0.35 Kgf MIN
 - 3. LIFE TEST: 5,000 CYCLES MIN.
4. TO CONFORM TO SINGATRON HAZARDOUS SUBSTANCE FREE SPEC.
5. HALOGEN PRODUCT IDENTIFICATION LABEL ON PACKAGING:
6. HALOGEN PRODUCT IDENTIFICATION LABEL ON PACKAGING:
7. FOR HAND SOLDERING LEAD-FREE PROCESS.
8. SOLDER HEAT RESISTANCE: HAND-SOLDERING 350°C 3 SECS.
9. PRINTED DATE CODE "YMMDD" ON TOP OF CONNECTOR.



NO	DESCRIPTION	QTY	MATERIAL	PLATING & COLOR
F	SHELL	1	COPPER ALLOY 0.25t	TIN (40u"Min.) PLATING
E	SIGNAL (S)	1	COPPER ALLOY 0.3t	GOLD FLASH (1~3u") PLATING
D	SPRING (+)	1	COPPER ALLOY 0.3t	GOLD FLASH ON CONTACT Matl Sn 120u"Min On Solder Tail Over Wt. 50u" Min
C	SPRING (-)	1	COPPER ALLOY 0.3t	GOLD FLASH ON CONTACT Matl Sn 120u"Min On Solder Tail Over Wt. 50u" Min
B	COVER	1	HIGH TEMP. THERMOPLASTIC	BLACK COLOR
A	HOUSING	1	HIGH TEMP. THERMOPLASTIC	BLACK COLOR
UNLESS OTHERWISE SPECIFIED TOLERANCES		SINGATRON ENTERPRISE CO., LTD.		
DECIMALS:		信晉企業股份有限公司		
ANGLES:		DC POWER JACK		
X	:±0.5	X	:±2°	DWN Victor 5.12'10
X.X	:±0.3	X.X	:±1°	CHKD lock Kuo5.12
X.XX	:±0.2	X.XX		APVD lock Kuo5.12
PART NO. 2DC1020-040111				
SCALE: 4:1				
UNIT: mm				
SHEET: 1 OF 1				
REV: A				
CUSTOMER COPY				

REV.	ECN NO.	OR DESCRIPTION	REVISED	DATE
A		Product Release	Victor	05.12'10

