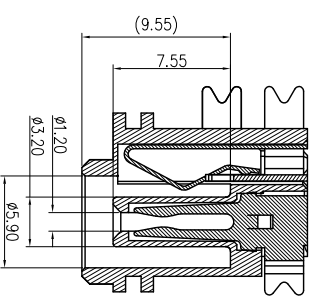
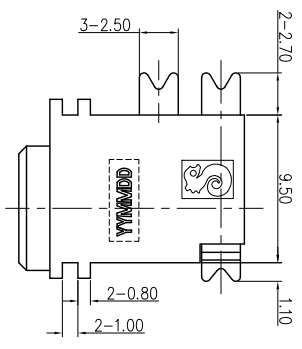
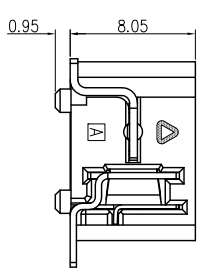
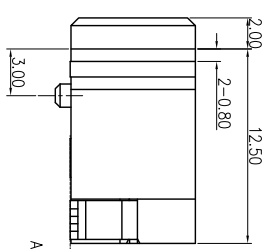
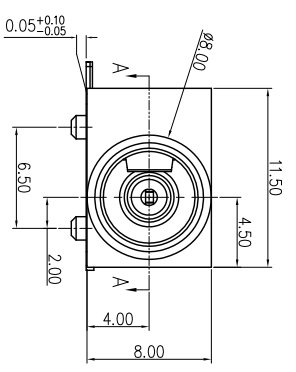


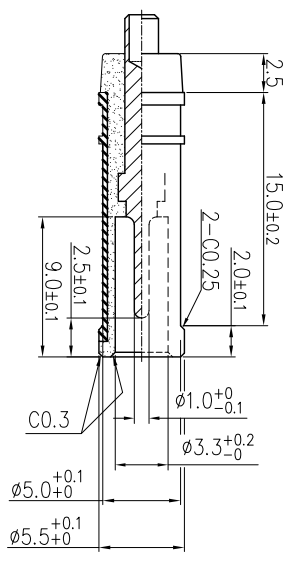
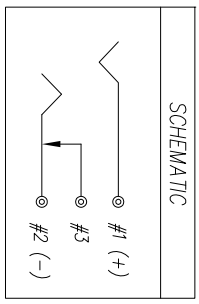
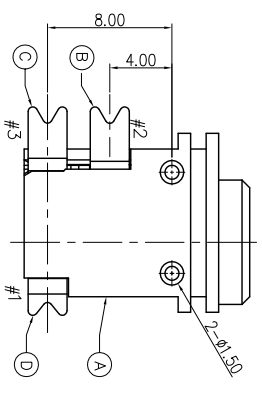
REV	ECN NO	OR DESCRIPTION	REVISED	DATE
A	Product Release	BILL	2010.05.20	
B	ECN NO.C100281	BILL	2010.07.19	
	CHANGE PLUG			



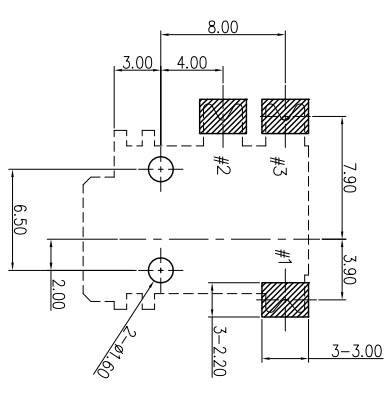
SECTION A-A



ALL SMT TAIL



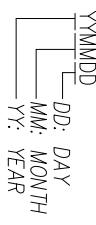
MATE PLUG(DP1510-000111)



RECOMMENDED P.C.B. LAYOUT
TOP VIEW (TOLERANCE: ±0.05)

SPECIFICATIONS:

- ELECTRICAL CHARACTERISTICS:
 - RATING: 13.5V 2A
 - CONTACT RESISTANCE: 50mΩMAX (INITIAL)
 - DIELECTRIC WITHSTANDING VOLTAGE: 500V AC FOR ONE MINUTE.
 - INSULATION RESISTANCE: 100MΩMIN. MEASURED BY 500 V DC
- MECHANICAL CHARACTERISTICS:
 - INSERTION FORCE : 0.3~3.0 KGF
 - WITHDRAWAL FORCE : 0.3~3.0 KGF
- LIFE TEST: 10000 CYCLES MIN.
- OTHER GENERAL SPEC. TO REFER "2DC2000 SERIES SPEC".
- TO CONFORM TO SINGATRON HAZARDOUS SUBSTANCE FREE SPEC.
- GREEN PRODUCT IDENTIFICATION MARK ON JACK: **G.P. PASS**
- GREEN PRODUCT IDENTIFICATION LABEL ON PACKAGING.
- FOR 260°C 10 SEC REFLOW SOLDERING LEAD-FREE PROCESS.
- PACKAGING IN TAPE & REEL.
- PRINTED DATE CODE "YYMMDD" ON TOP OF CONNECTOR.



NO	DESCRIPTION	QTY	MATERIAL	PLATING & COLOR
D	TERMINAL	1	COPPER ALLOY,T=0.50mm	A920U *MIN. N: 60U *MIN.
C	SHUNT	1	COPPER ALLOY,T=0.40mm	Au1u *MIN. Ni60u *MIN
B	TIP	1	COPPER ALLOY,T=0.25mm	A920U *MIN. N: 60U *MIN.
A	BODY	1	HIGH TEMP THERMOPLASTIC	YELLOW COLOR(T16C)

UNLESS OTHERWISE SPECIFIED TOLERANCES	
DECIMALS:	ANGLES:
X : ±0.5	X : ±2°
X.X : ±0.3	X.X : ±1°
X.XX : ±0.2	

TITLE	DC POWER JACK
DWN	BILL 10.07.20
CHKD	SCALE 3:1 UNIT: mm
APVD	Liban 10.07.20

Singatron Enterprise Co., Ltd.
信登企業股份有限公司

PART NO. 2DC2000-001121
SHEET: 10F1
REV: B
CUSTOMER COPY