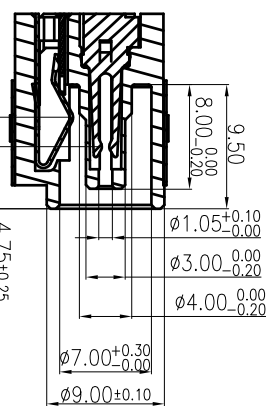
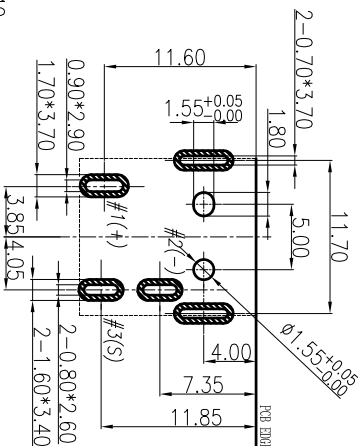
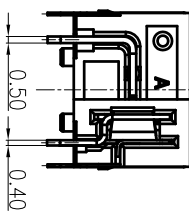
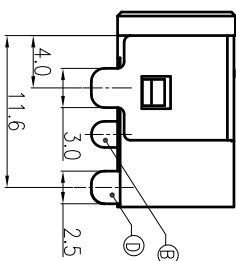
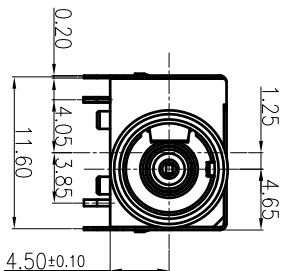
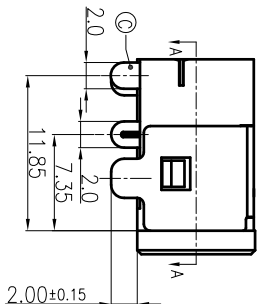
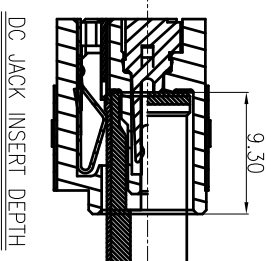
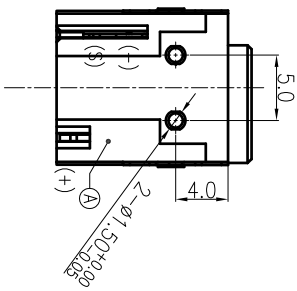


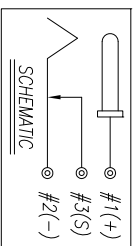
MATE PLUG



SECTION A-A



DC JACK INSERT DEPTH



- SPECIFICATIONS:
- ELECTRICAL CHARACTERISTICS:
    - RATING: 13.5V 2A
    - CONTACT RESISTANCE: 50mΩ MAX.(INITIAL)
    - DIELECTRIC WITHSTANDING VOLTAGE: 500V AC FOR ONE MINUTE.
    - INSULATION RESISTANCE: 100MΩ MIN. MEASURED BY 500 V DC
  - MECHANICAL CHARACTERISTICS:
    - INSERTION FORCE : 0.3~3.0 KGf
    - WITHDRAWAL FORCE : 0.3~3.0 KGf
    - LIFE TEST: 5000 CYCLES MIN.
    - OTHER GENERAL SPEC. TO REFER "2DC2031 SERIES SPEC."
    - TO CONFORM TO SINGATRON HAZARDOUS SUBSTANCE FREE SPEC.
    - HALOGEN FREE PRODUCT IDENTIFICATION MARK:
    - HALOGEN FREE PRODUCT IDENTIFICATION LABEL ON PACKAGING:
    - FOR WAVE SOLDERING LEAD-FREE PROCESS.
    - PACKAGING IN Tape & Reel.
    - PRINTED DATE CODE "YMMD" ON TOP OF CONNECTOR.

DD: DAY  
MM: MONTH  
YY: YEAR

DECIMALS:	ANGLES:	TITLE	DC POWER JACK
X : ±0.5	X : ±2°	DWN	PART NO. 2DC2031-000111F
X.X : ±0.3	X.X : ±1°	CHKD	SCALE 3:1 UNIT: mm
X.XX : ±0.2		APVD	SIZE: A3 SHEET: 1 OF 1 REV: A

CUSTOMER COPY

REV.	ECN NO.	OR DESCRIPTION	REVISED	DATE
A		PRODUCT RELEASE	Fanlun	2011.12.29

