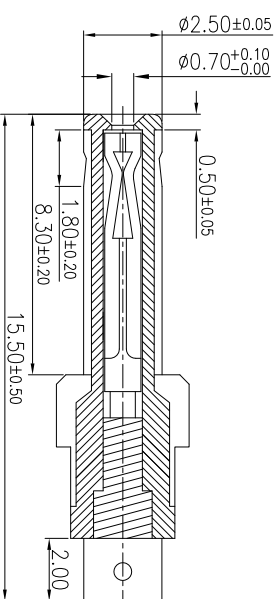
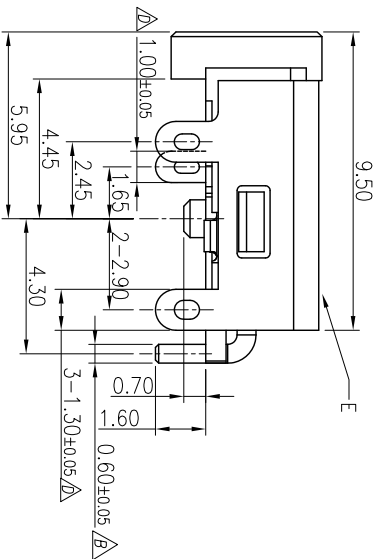
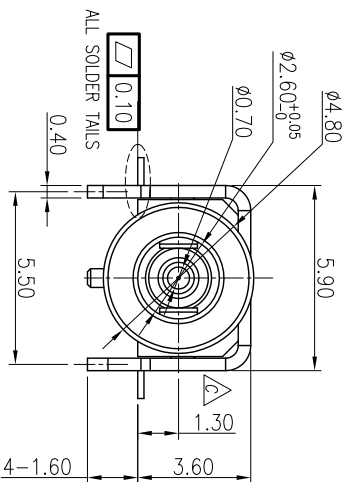
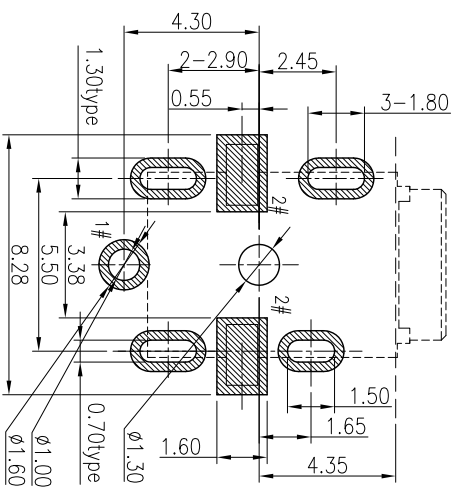
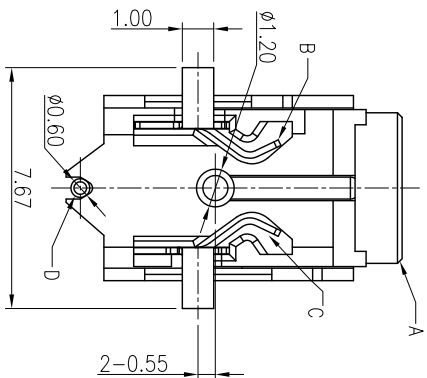


SPECIFICATIONS:

1. ELECTRICAL CHARACTERISTICS:
 - 1.1 RATING: 6V, 2A.
 - 1.2 INSERTION FORCE: 0.3-2.0KGF
 - 1.3 CONTACT RESISTANCE: 30 MILLIOHMS Max. FOR INITIAL, 50 MILLIOHMS Max. AFTER 5000CYCLES.
 - 1.4 INSULATION RESISTANCE: 100 MEGAOHMS Min. BY 500V DC AFTER 1 MINUTE.
2. SPECIFICATION: SEE 2DC22002 SERIES SPECIFICATION.
3. SOLDER HEAT RESISTANCE: REFLOW SOLDERING 260° FOR 10SEC.
4. TO CONFORM TO SINGATRON HAZARDOUS SUBSTANCE FREE SPEC.
5. HALOGEN FREE PRODUCT IDENTIFICATION MARK ON PRODUCT:
6. HALOGEN FREE PRODUCT IDENTIFICATION LABEL ON PACKAGING:
7. FOR REFLOW SOLDERING LEAD FREE PROCESS.
8. DATE CODE DESCRIPTION:



PLUG SPEC.(REF ONLY)



RECOMMENDED P.C.B. LAYOUT(PCB THICKNESS:1.2mm)
TOP VIEW (TOLERANCE: ±0.05)

| REV. | ECN NO. | OR DESCRIPTION | REVISED | DATE |
|------|------------------|------------------|-----------|------------|
| B | ECN NO: C1000391 | MODIFY DIMENSION | LONGJIANG | 2010.09.21 |
| C | ECN: C110092 | Body 減縮以節省物料 | Haijin | 2011.04.26 |
| D | ECN: C110374 | ADD DIM | Longjiang | 2011.11.28 |

| NO | DESCRIPTION | QTY | MATERIAL | PLATING & COLOR |
|----|--------------|-----|----------------------------|-----------------|
| E | SHELL | 1 | SPCC | NICKEL PLATING |
| D | PIN | 1 | COPPER ALLOY, Ø0.70 | GOLD FLASH |
| C | TIP SPRING-B | 1 | COPPER ALLOY, 0.20T | SILVER PLATING |
| B | TIP SPRING-A | 1 | COPPER ALLOY, 0.20T | SILVER PLATING |
| A | HOUSING | 1 | HIGH TEMP. THERMAL PLASTIC | COLOR BLACK |
| NO | DESCRIPTION | QTY | MATERIAL | PLATING & COLOR |

UNLESS OTHERWISE SPECIFIED TOLERANCES

Singatron Enterprise Co., Ltd.

信音企業股份有限公司

TITLE: DC POWER JACK

| DECIMALS: | ANGLES: |
|-------------|-----------|
| X : ±0.5 | X : ±2° |
| X.X : ±0.3 | X.X : ±1' |
| X.XX : ±0.2 | |

| DWN | lang | unit | PART NO. | 2DC2263-002111 |
|------|------|------|----------|----------------|
| CHKD | zz | mm | SCALE | 6:1 |
| APVD | uno | mm | SIZE: | A3 |
| | | | SHEET: | 10F1 |
| | | | REV.: | D |

CUSTOMER COPY