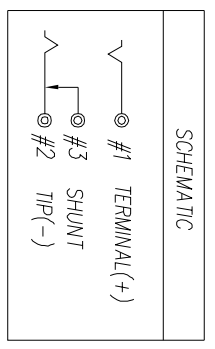
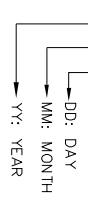


MATING PLUG  
TOLERANCE: ±0.10

RECOMMEND P.C.B LAYOUT  
TOP VIEW TOLERANCES: ±0.05

**SPECIFICATIONS:**

1. ELECTRICAL CHARACTERISTICS:
  - 1-1 RATING: 20V 7A
  - 1-2 CONTACT RESISTANCE: 30mΩ MAX.(INITIAL)
  - 1-3 DIELECTRIC WITHSTANDING VOLTAGE: 500V AC FOR ONE MINUTE
  - 1-4 INSULATION RESISTANCE: 100MΩ MIN. MEASURED BY 500 VDC.
2. MECHANICAL CHARACTERISTICS:
  - 2-1 INSERTION FORCE : 3.0 KG Max.
  - 2-2 WITHDRAWAL FORCE : 1.0~3.0 KG
3. LIFE TEST: 5,000 CYCLES MIN.
4. TO CONFORM TO SINGATRON HAZARDOUS SUBSTANCE FREE SPEC.
5. OTHER GENERAL SPEC, PLEASE REFER TO "2DC3006-006111F SPEC".
6. HALOGEN FREE PRODUCT IDENTIFICATION MARK ON JACK
7. HALOGEN FREE PRODUCT IDENTIFICATION LABEL ON PACKAGING.
8. FOR REFLOW SOLDERING LEAD-FREE PROCESS.
9. PRINTED DATE CODE "MMDD" ON TOP OF CONNECTOR.



ITEM	DESCRIPTION	QUANTITY	MATERIAL	FINISH	REMARKS
F	GROUND	1	STAINLESS STEEL: 0.20T	Ni: 60u"	
E	SHELL	1	BRASS: 0.4T	Ni: 60u"	
D	SHUNT	1	BRASS: 0.3T	GOLD FLASH ON CONTACT AREA MATE Sn 120u" ON SOLDER: ALL OVER Ni 60u".	
C	TIP	1	PHOSPHOR BRONZE: 0.25T	GOLD FLASH ON CONTACT AREA MATE Sn 120u" ON SOLDER: ALL OVER Ni 60u".	
B	TERMINAL	1	PHOSPHOR BRONZE: 0.4T	BLACK	
A	BODY	1	HIGH THERMOPLASTIC TEMP: UL 94V-0	BLACK	

UNLESS OTHERWISE SPECIFIED TOLERANCES

Singatron Enterprise Co., Ltd.  
信音企業股份有限公司

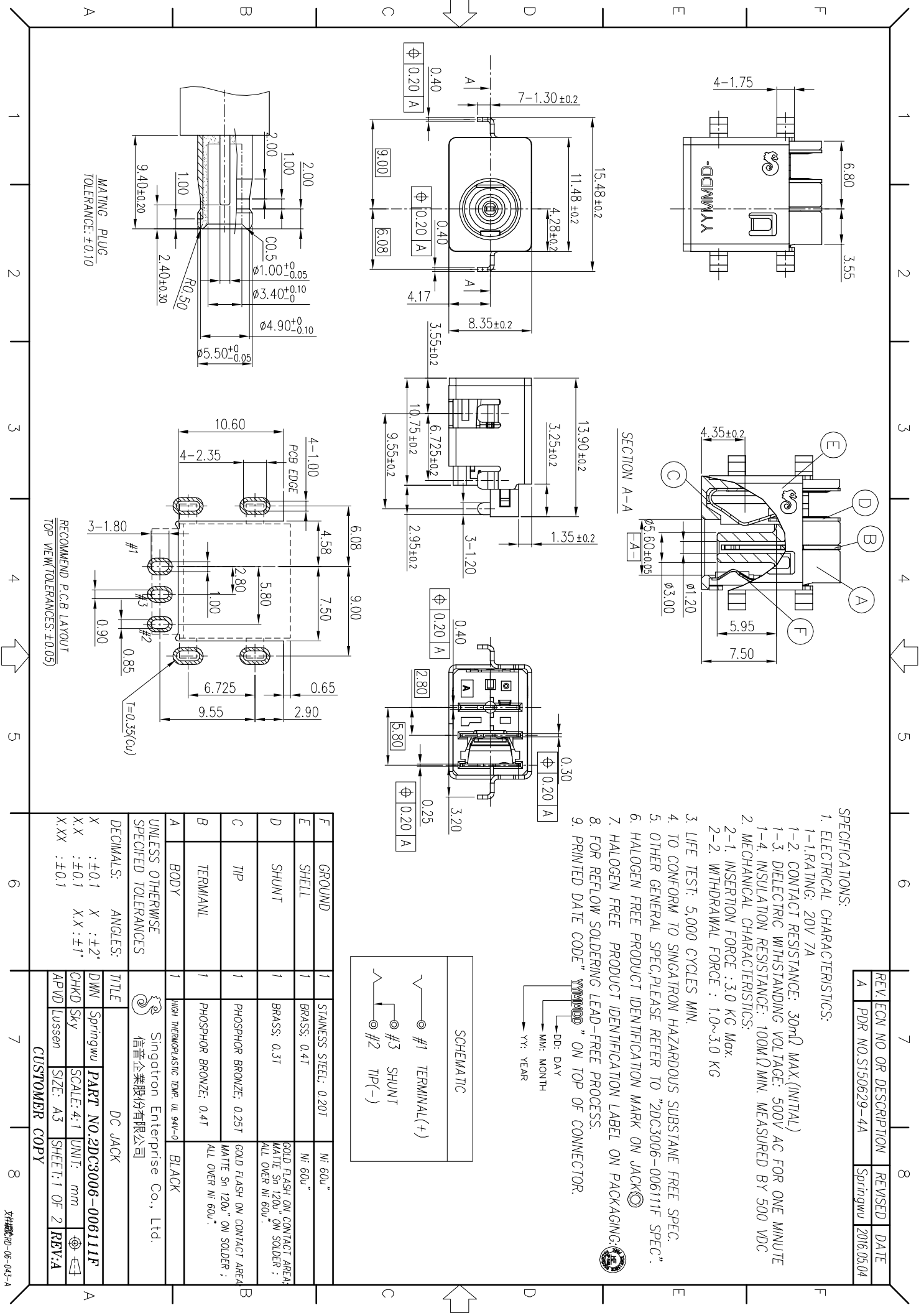
DC JACK

PART NO. 2DC3006-006111F

SCALE: 4:1 UNIT: mm

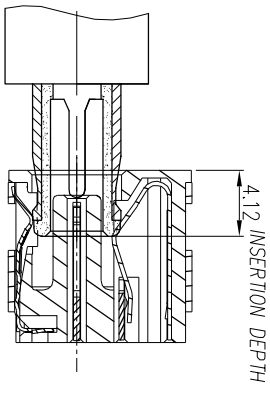
SIZE: A3 SHEET: 1 OF 2 REV: A

CUSTOMER COPY

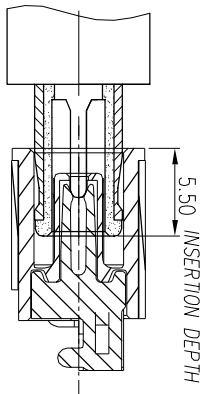


REV.	ECN NO OR DESCRIPTION	REVISED	DATE
A	PDR NO:ST50629-4A	Springwu	2016.05.04

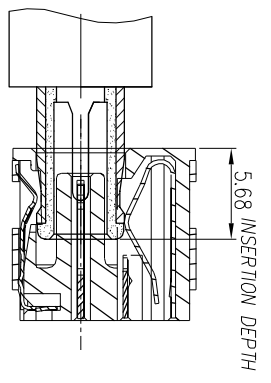
1. GROUND PIN CONTACT FIRST



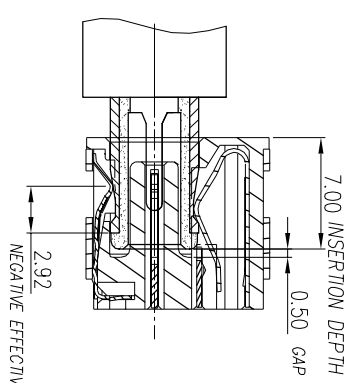
2. POSITIVE PIN CONTACT SECOND



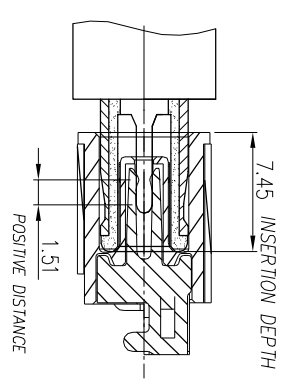
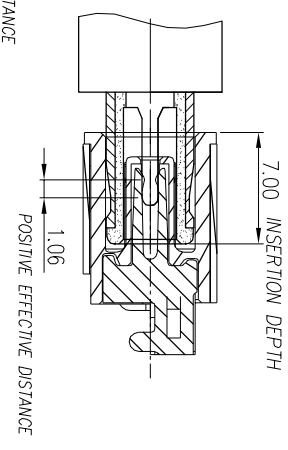
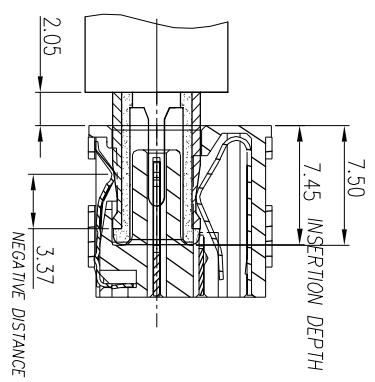
3. NEGATIVE PIN CONTACT



4. LOCK POSITION



5. FULL INSERTION



UNLESS OTHERWISE SPECIFIED TOLERANCES

Singatron Enterprise Co., Ltd.  
信音企業股份有限公司

DECIMALS:	ANGLES:	TITLE	DC JACK
X : ±0.1	X : ±2°	DWM	Springwu
X.X : ±0.1	X.X : ±1°	CHKD	Sky
X.XX : ±0.1		APVD	Lussen

PART NO: 2DC3006-006111F  
SCALE: 4:1  
UNIT: mm  
SHEET: 2 OF 2  
REV: A

CUSTOMER COPY