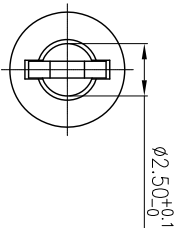
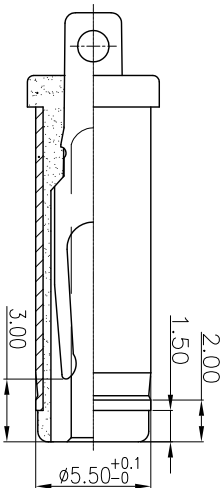
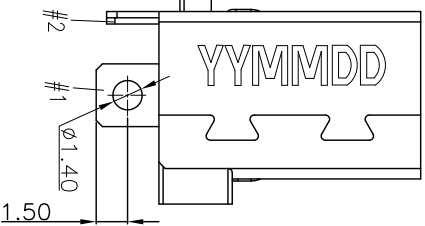
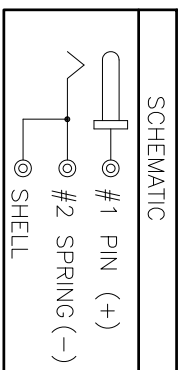
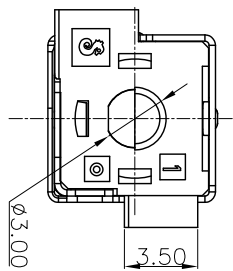
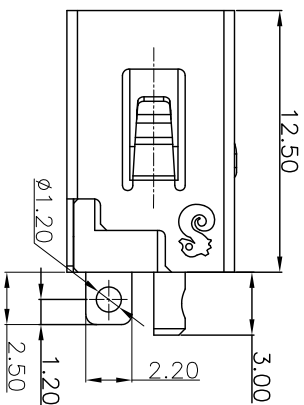
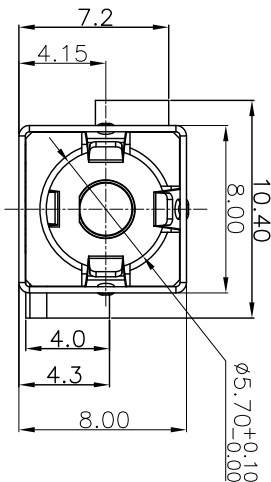
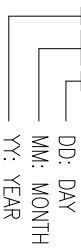


SPECIFICATIONS:

- ELECTRICAL CHARACTERISTICS:
 - RATING: 20V 7A
 - CONTACT RESISTANCE: 30mΩ MAX.(INITIAL)
 - DIELECTRIC WITHSTANDING VOLTAGE: 500V AC FOR ONE MINUTE.
 - INSULATION RESISTANCE: 100MΩ MIN. MEASURED BY 500 VDC
- MECHANICAL CHARACTERISTICS:
 - INSERTION FORCE(INITIAL) : 3.0 KG MAX.
 - WITHDRAWAL FORCE(INITIAL) : 0.5 KG MIN.
 - LIFE TEST: 5000 CYCLES MIN.
 - TO CONFORM TO SINGATRON HAZARDOUS SUBSTANCE FREE SPEC.
 - GREEN PRODUCT IDENTIFICATION MARK ON JACK:
 - GREEN PRODUCT IDENTIFICATION LABEL ON PACKAGING:
 - PRINTED DATE CODE "YYMMDD" ON TOP OF CONNECTOR.



MATING PLUG (TOLERANCES:±0.10)

REV.	ECN NO OR DESCRIPTION	REVISED	DATE
A	PDR NO: T120210-2A	Springwu	2012.03.03

E	STOPPER	1	HIGH TEMP. THERMOPLASTIC;UL94V-0	BLACK
D	SHELL	1	COPPER ALLOY T=0.30	Ni 60u" Min. plating over dill.
C	PIN	1	BRASS	Ni 60u" Min. plating over oil.
B	SPRING	1	COPPER ALLOY T=0.25	Au 1u" Min. on Contact Area. Sn 100u" Min. on Solder Tail. all over Nickel 50u" Min. plating.
A	BODY	1	THERMOPLASTIC;UL94V-0	BLACK
NO		DESCRIPTION	MATERIAL	PLATING & COLOR
UNLESS OTHERWISE SPECIFIED TOLERANCES				
DECIMALS: ANGLES:				
X	:±0.5	X	:±2°	
X.X	:±0.3	X.X	:±1'	
X.XX	:±0.2			
TITLE: DC POWER JACK				
DWN	Springwu	PART NO.	2DC3051-002111F	
CHKD	Sky	SCALE:4:1	UNIT:	mm
APVD	Lussen	SIZE: A3	SHEET: 1 OF 1	REV: A
SINGATRON ENTERPRISE CO., LTD. 信晉企業股份有限公司				
CUSTOMER COPY				