

REV.	ECN NO. OR DESCRIPTION	REVISED	DATE
A	PDR NO.: T110822-4A	Eileen	2012.02.01

SPECIFICATIONS:

1. ELECTRICAL CHARACTERISTICS:

- 1-1 RATING: 20V 7A
- 1-2 CONTACT RESISTANCE: 30mΩ MAX (INITIAL)
- 1-3 DIELECTRIC WITHSTANDING VOLTAGE: 500V AC FOR ONE MINUTE
- 1-4 INSULATION RESISTANCE: 100MΩ MIN. MEASURED BY 500 VDC

2. MECHANICAL CHARACTERISTICS:

- 2-1 INSERTION FORCE : 3.5 KG Max.
- 2-2 WITHDRAWAL FORCE : 0.5~3.5 KG

3. LIFE TEST: 10,000 CYCLES MIN.

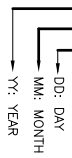
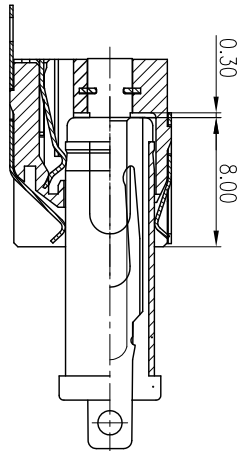
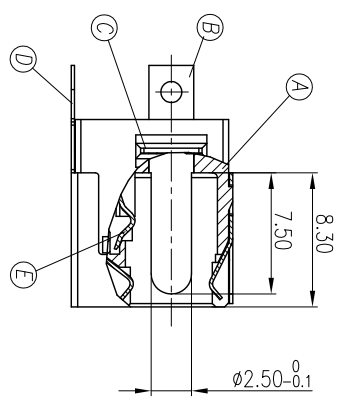
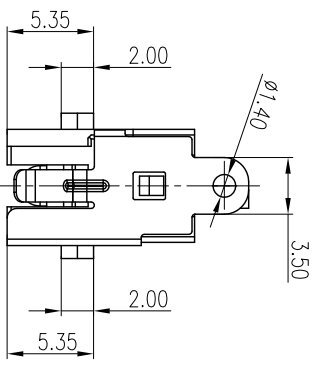
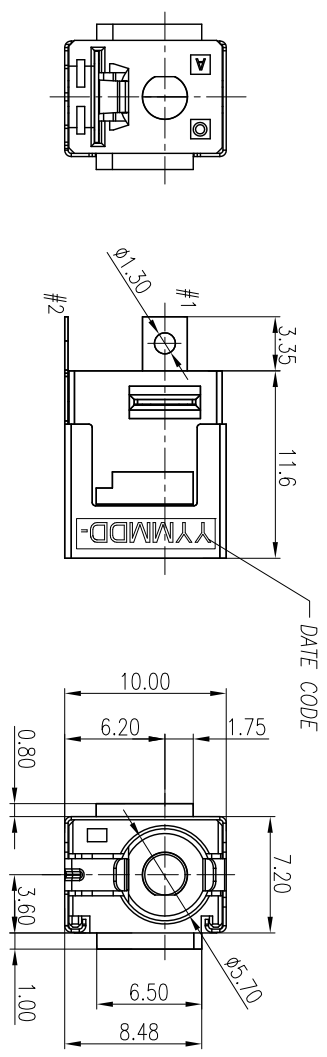
4. TO CONFORM TO SINGATRON HAZARDOUS SUBSTANCE FREE SPEC.

5. HALOGEN FREE PRODUCT IDENTIFICATION MARK ON JACK:

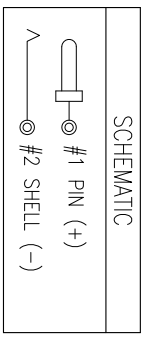
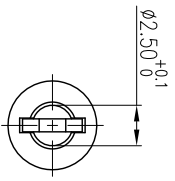
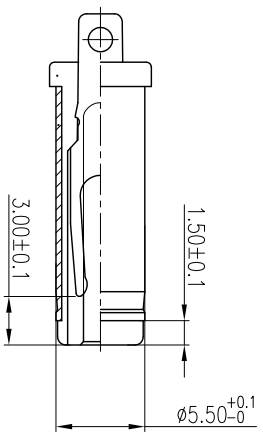
6. HALOGEN FREE PRODUCT IDENTIFICATION LABEL ON PACKAGING:

7. FOR REFLOW SOLDERING LEAD-FREE PROCESS.

8. PRINTED DATE CODE "YYMMDD" ON TOP OF CONNECTOR.



MATING DRAWING



MATING PLUG

E	SPRING	1	COPPER ALLOY, 0.25T	Ni 60u"
D	SHELL	1	COPPER ALLOY, 0.20T	Ni 60u"
C	TERMINAL	1	STAINLESS STEEL, 0.30T	N/A
B	PIN	1	BRASS BAR	Ni 60u"
A	BODY	1	THERMOPLASTIC UL 94V-0	BLACK

UNLESS OTHERWISE SPECIFIED TOLERANCES

Singatron Enterprise Co., Ltd.
信營企業股份有限公司

DECIMALS:	ANGLES:	TITLE	DC JACK
X : ±0.5	X : ±2°	DWN	Eileen
X.X : ±0.3	X.X : ±1°	CHKD	Sky
X.XX : ±0.2		APVD	Lussen

PART NO. 2DC3057-000111F
SCALE: 4:1
UNIT: mm
SHEET: 1 OF 1
REV: A

CUSTOMER COPY