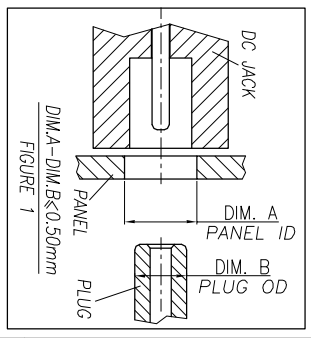
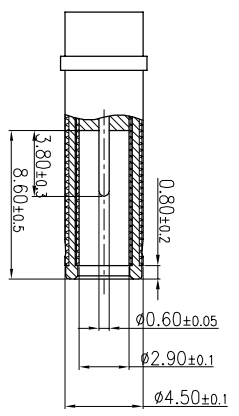
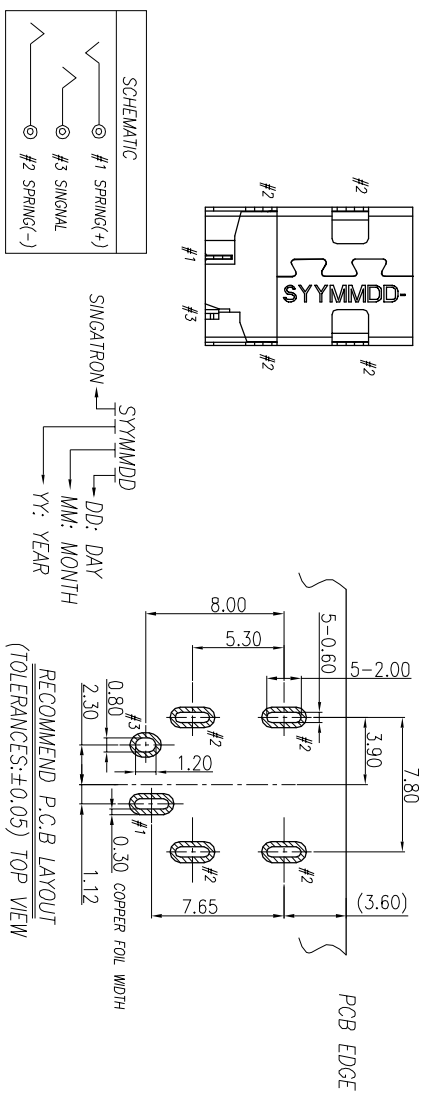
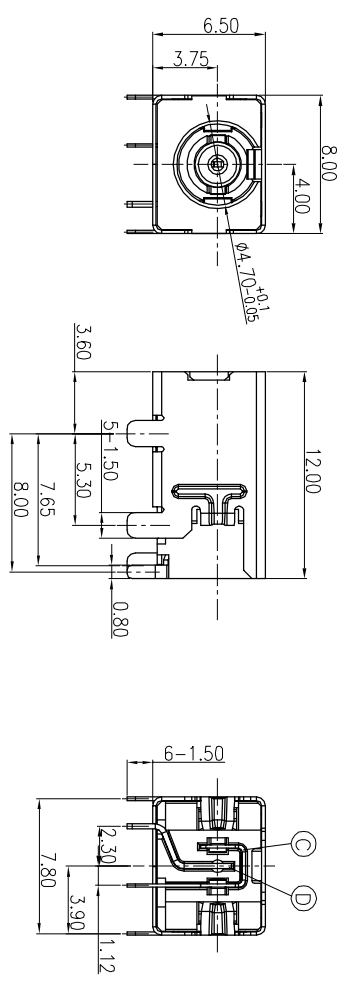
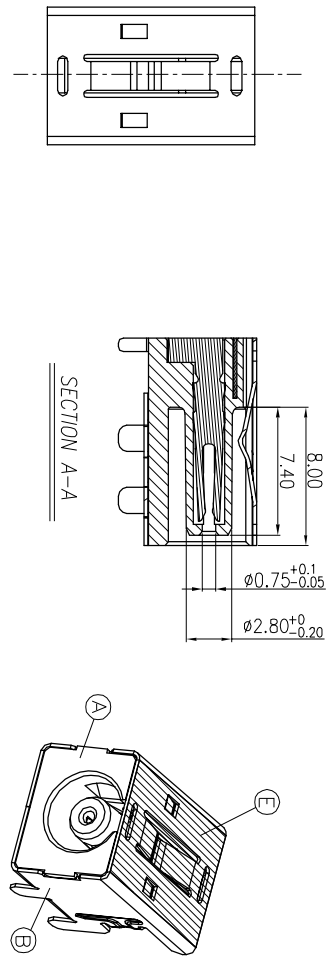


REV.	ECN NO OR DESCRIPTION	Requested	REVISED	DATE
A	PDR NO.120725-2A	SINGATRON-Springwu	Springwu	2012.12.29
B	ECN NO.S202104-R02	SINGATRON-Springwu	Springwu	2021.5.12

**SPECIFICATIONS:**

- ELECTRICAL SPEC:
  - 1-1. RATED CURRENT: 6.5A
  - 1-2. RATED VOLTAGE: 20V.
  - 1-3. INSULATION RESISTANCE: 100MΩ MIN. AFTER BY 500 VDC FOR 1 MINUTE.
  - 1-4. DIELECTRIC WITHSTANDING VOLTAGE: 500V AC FOR 1 MINUTE.
  - 1-5. CONTACT RESISTANCE: 30mΩ MAX.(INITIAL).
- MECHANICAL SPEC:
  - 2-1. INSERTION FORCE: 0.8~3.0kgf.
  - 2-2. WITHDRAWAL FORCE : 0.6~2.5kgf.
- WEIGHT: 1.0 GRAM.
- TEMPERATURE RISE CAN'T EXCEED 30° C MAX.
- LIFE TEST(INSERTION/WITHDRAWAL): 5,000 CYCLES MIN.
- OTHER GENERAL SPEC, PLEASE REFER TO "2DC3071 SERIES SPEC".
- HALOGEN FREE PRODUCT IDENTIFICATION LABEL ON JACK: (C)
- FOR REFLOW SOLDERING- LEAD-FREE PROCESS.
- THE PANEL'S ID MUST BE GREATER THAN THE PLUG'S OD WHICH MUST HAVE A DIFFERENCE OF LESS THAN OR EQUAL TO 0.50mm.(AS SHOWN IN FIGURE 1.)



ITEM	DESCRIPTION	QTY	MATERIAL/THICK(mm)	FINISH
E	MYLAR	1	0.121(CH250-1750)	BROWN
D	SIGNAL	1	C5210 0.30T	COLD FLASH OVER N° 50μ" MIN.
C	SPRING+	1	C5210 0.20T	COLD FLASH ON SOLDER TAIL; OVER N° 50μ" MIN.
B	SHELL	1	C5210 0.20T	BLACK
A	BODY	1	PA101(+30%GF R630NH/PPA) UL 94V-0	BLACK

DECIMALS:	ANGLES:	TITLE
X : ±0.5	X : ±2°	DC POWER JACK
X.X : ±0.3	X.X : ±1°	DWN Springwu
X.XX : ±0.2		CHKD Sky
		APVD Lussen

UNLESS OTHERWISE SPECIFIED TOLERANCES	RECOMMEND P.C.B LAYOUT (TOLERANCES:±0.05) TOP VIEW
SYMMDD	DD: DAY
SINGATRON	MM: MONTH
	YY: YEAR

1 2 3 4 5 6 7 8