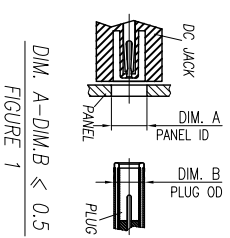
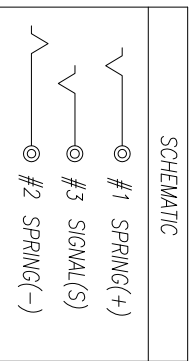


MATING PLUG  
TOLERANCE:  $\pm 0.10$

RECOMMEND P.C.B LAYOUT (TOP VIEW)  
T=1.20MM (TOLERANCES:  $\pm 0.05$ )

SPECIFICATIONS:

- ELECTRICAL CHARACTERISTICS:
  - RATING: 20V 10A
  - CONTACT RESISTANCE: 30m $\Omega$  MAX.(INITIAL)
  - DIELECTRIC WITHSTANDING VOLTAGE: 500V AC FOR ONE MINUTE
  - INSULATION RESISTANCE: 100M $\Omega$  MIN. MEASURED BY 500 VDC
- MECHANICAL CHARACTERISTICS:
  - INSERTION FORCE : 3.0 KG Max.
  - WITHDRAWAL FORCE : 0.3~3.0 KG
- LIFE TEST: 5,000 CYCLES MIN.
- OTHER GENERAL SPEC. TO REFER "2DC3092 SERIES SPEC";
- TO CONFORM TO SINGATRON HAZARDOUS SUBSTANCE FREE SPEC.
- HALOGEN FREE PRODUCT IDENTIFICATION MARK ON JACK:
- HALOGEN FREE PRODUCT IDENTIFICATION LABEL ON PACKAGING:
- FOR REFLOW SOLDERING LEAD-FREE PROCESS.
- THE PANEL'S ID MUST BE GREATER THAN THE PLUG'S OD WHICH MUST HAVE A DIFFERENCE OF LESS THAN OR EQUAL TO 0.5 mm.(AS SHOWN IN FIGURE 1.)



F	CAP	1	HIGH TEMP.THERMOPLASTIC UL94V-0	BLACK
E	SIGNAL	1	COPPER ALLOY 0.30T	
D	SPRING(-)	1	COPPER ALLOY 0.25T	5% Ni OVER 25% Pd/Ni PLATED ON MATING AREA 120μM NiTE Sn ON SOLDERING 50μM UNDER PLATING OVERALL.
C	SPRING(+)	1	COPPER ALLOY 0.25T	
B	SHELL	1	STAINLESS STEEL 0.30T	Ni: 60μ"
A	BODY	1	HIGH TEMP.THERMOPLASTIC UL94V-0	BLACK
NO	DESCRIPTION	QTY	MATERIAL	PLATING & COLOR
UNLESS OTHERWISE SPECIFIED TOLERANCES				
Singaton Enterprise Co., Ltd. 信音企業股份有限公司				
TITLE DC POWER JACK				
DWG QIANG 2013.10.21 PART NO.2DC3092-001111F				
CHKD SHI 2013.10.21 SCALE 1:1 UNIT: mm				
APVD LUOSU 2013.10.23 SIZE: A3 SHEET: 10F-1 REV: A				

CUSTOMER COPY

PRODUCT OUTLINE  
PCB EDGE