

REV.	ECN NO OR DESCRIPTION	REVISED	DATE
A	PDR NO.T140220-1A&T140722-2A&2B	Allen	2015.02.02

SPECIFICATIONS:

- ELECTRICAL CHARACTERISTICS:
 - 1-1.RATING: DC 20V 5A (OVER AMBIENT ΔT : 30°C MAX.)
 - 1-2.CONTACT RESISTANCE:20m Ω MAX.(INITIAL);
30m Ω MAX.(AFTER LIFE TEST)
 - 1-3.DIELECTRIC WITHSTANDING VOLTAGE:500V AC FOR ONE MINUTE.
 - 1-4.INSULATION RESISTANCE:100M Ω MIN. MEASURED BY 500V DC.
- MATING FORCE/UNMATING FORCE: SEE APPENDED FIGURE 1.
- LIFE TEST: 5000 CYCLES.
- OTHER GENERAL SPEC. TO REFER "2DC3127 SERIES SPEC".
- TO CONFORM TO SINGATRON HAZARDOUS SUBSTANCE FREE SPEC.
- HALOGEN FREE PRODUCT IDENTIFICATION MARK ON PRODUCT:
- HALOGEN FREE PRODUCT IDENTIFICATION LOGO ON PACKAGING:

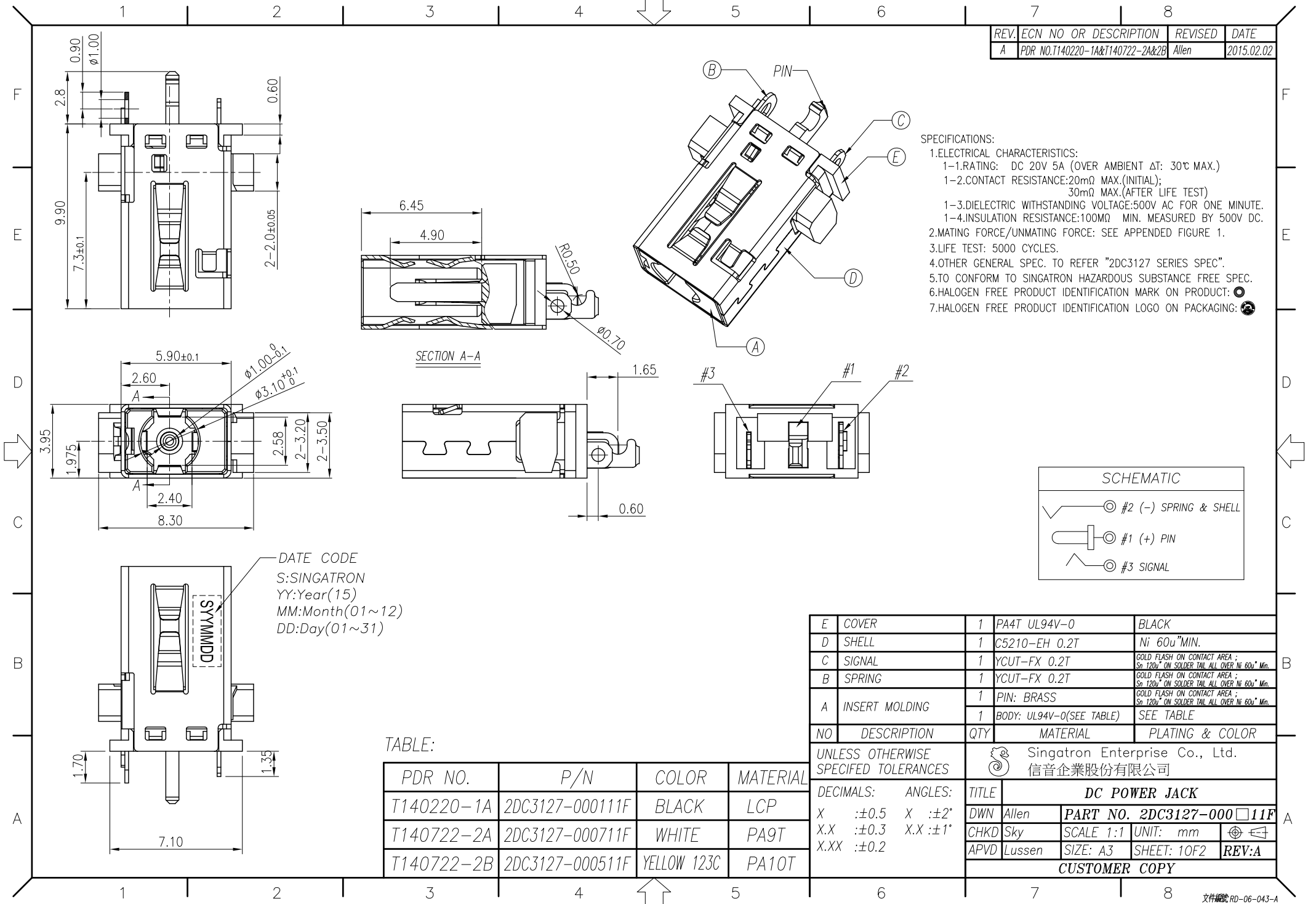
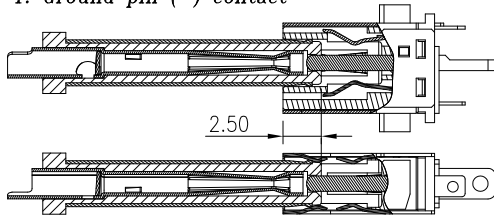


TABLE:

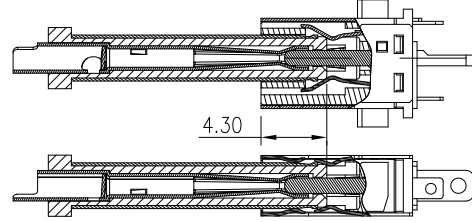
PDR NO.	P/N	COLOR	MATERIAL
T140220-1A	2DC3127-000111F	BLACK	LCP
T140722-2A	2DC3127-000711F	WHITE	PA9T
T140722-2B	2DC3127-000511F	YELLOW 123C	PA10T

REV.	ECN NO OR DESCRIPTION	REVISED	DATE
A	PDR NO.T140220-1A&T140722-2A&2B	Allen	2015.02.02

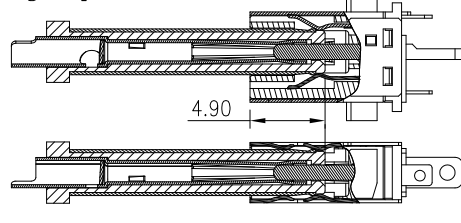
1. Ground pin (-) contact



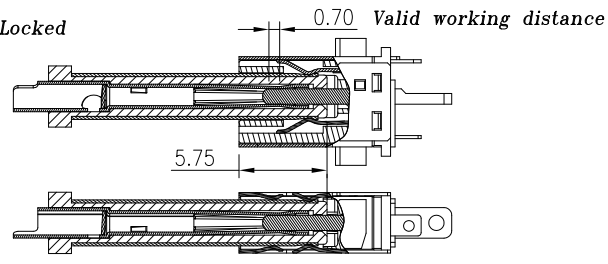
2. Power pin (+) contact



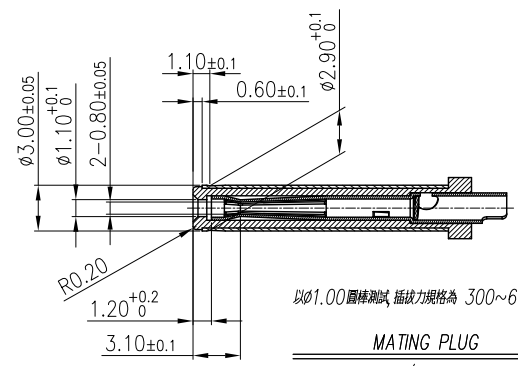
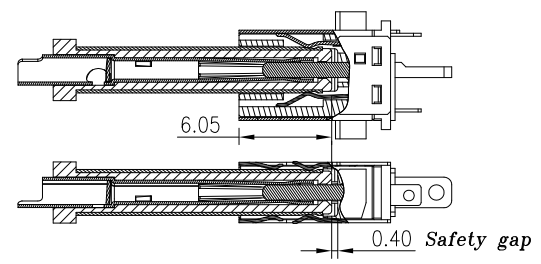
3. Signal pin contact



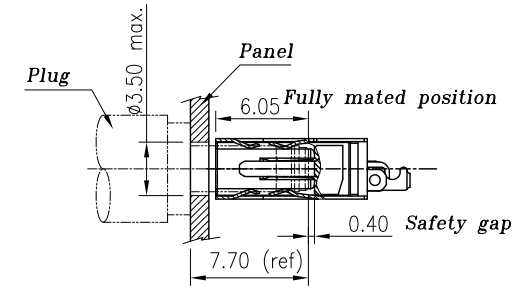
4. Locked



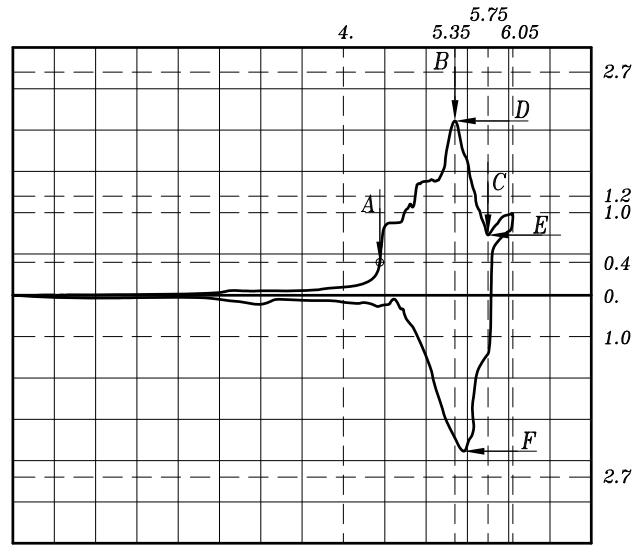
5. Fully mated position



以0.1.00圓棒測試 插拔力規格為 300~600g
MATING PLUG
 SINGATRON P/N: 2DP1546-000111F



APPENDED FIGURE 1.



- A: 插入最明顯手感力量起始點位置(mm)
→力量爬升至0.4kg時,位置必須在4.0mm之後 (Plug插入至4.0mm之前力量不可超過0.4kg)
- B: 插入力最大波峰值位置(mm)
→5.35+/- 0.2mm
- C: 插入LOCK力量下降波谷位置(mm)
→5.75+/- 0.2mm
- D: 插入力最大波峰值(kg)
→ Initial 1.2~2.7kg, after life test 1.0~2.7kg
- E: 插入LOCK力量下降波谷值(kg)
→ (D值-E值) > 0.5kg
- F: 拔出力最大值(kg)
→(Initial/after life test)1.0~2.7kg

NO	DESCRIPTION	QTY	MATERIAL	PLATING & COLOR
UNLESS OTHERWISE SPECIFIED TOLERANCES			Singatron Enterprise Co., Ltd. 信音企業股份有限公司	
DECIMALS:	ANGLES:	TITLE	DC POWER JACK	
X : ±0.5	X : ±2°	DWN Allen	PART NO. 2DC3127-000□11F	
X.X : ±0.3	X.X : ±1°	CHKD Sky	SCALE 1:1	UNIT: mm
X.XX : ±0.2		APVD Lussen	SIZE: A3	SHEET: 20F2
CUSTOMER COPY				