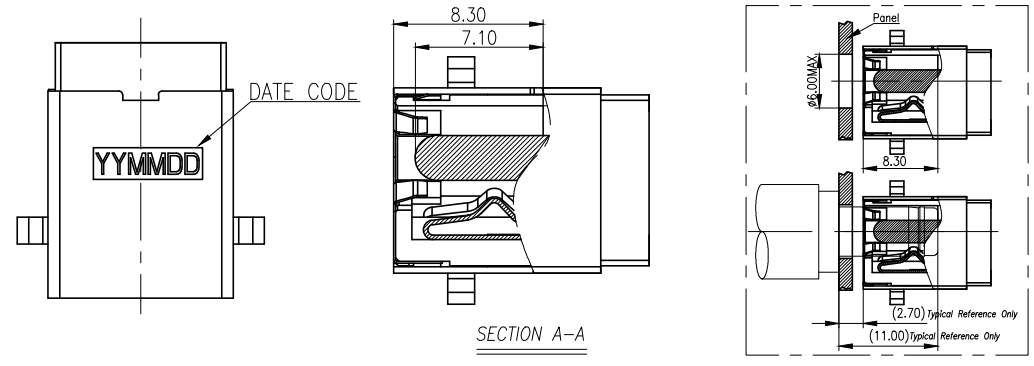
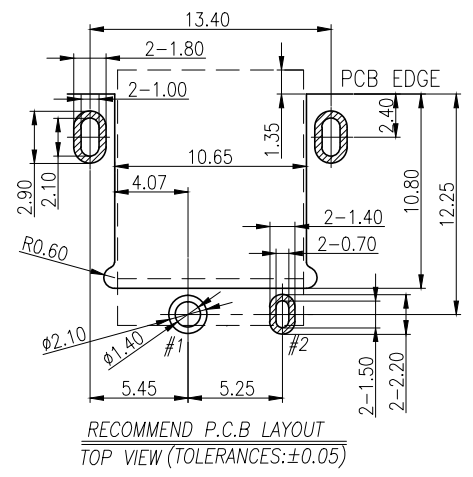
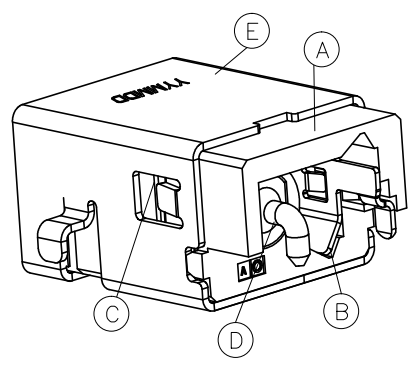
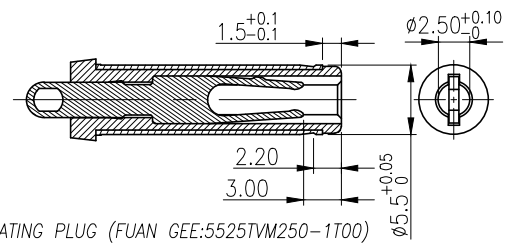
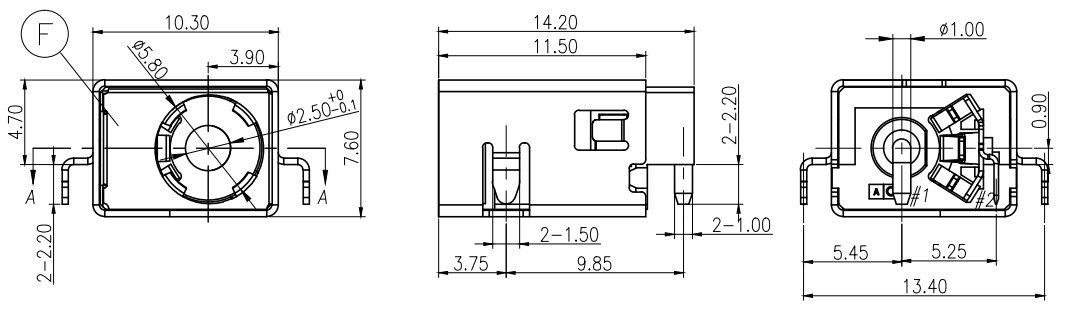
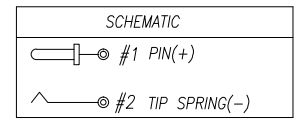


REV.	ECN NO OR DESCRIPTION	REVISED	DATE
A	PDR NO.: T210326-1A	Jie	2021.8.11



- SPECIFICATIONS:
- ELECTRICAL CHARACTERISTICS:
    - RATING: 20V 12A
    - CONTACT RESISTANCE: 30mΩ MAX.
    - DIELECTRIC WITHSTANDING VOLTAGE: 500V AC FOR ONE MINUTE.
    - INSULATION RESISTANCE: 100MΩ MIN. MEASURED BY 500 VDC
  - MECHANICAL CHARACTERISTICS:
    - INSERTION FORCE: 2.5 Kgf MAX.
    - WITHDRAWAL FORCE: 0.8~2.0Kgf.
  - TEMPERATURE RISE CAN'T EXCEED 30°C
  - LIFE TEST: 5,000 CYCLES.
  - WEIGHT: 2.6g
  - TO CONFORM TO SINGATRON HAZARDOUS SUBSTANCE FREE SPEC.
  - GREEN PRODUCT IDENTIFICATION MARK ON JACK:
  - GREEN PRODUCT IDENTIFICATION LABEL ON PACKAGING:
  - FOR REFLOW SOLDERING LEAD-FREE PROCESS.
  - PRINTED DATE CODE "YYMMDD".

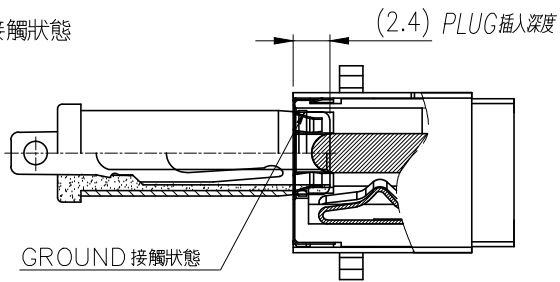
DD: DAY  
 MM: MONTH  
 YY: YEAR



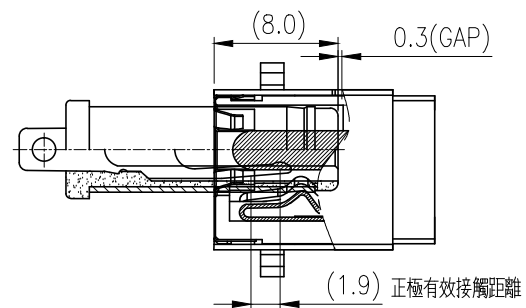
F	GROUNDING	1	STAINLESS 0.1T	N/A
E	SHIELDING	1	BRASS 0.35T	Ni 60u"
D	PIN	1	BRASS	GOLD FLASH OVER Ni 50u"
C	STOPPER	1	HIGH TEMP. THERMOPLASTIC	N/A
B	TIP SPRING	1	COPPER ALLOY 0.25T	GRD FLASH On Contact Area. Sn 80u/Min Or Solder Pak. All Over Ni: 50u/Min.
A	BODY	1	HIGH TEMP. THERMOPLASTIC	BLACK
NO	DESCRIPTION	QTY	MATERIAL	PLATING & COLOR
UNLESS OTHERWISE SPECIFIED TOLERANCES		Singatron Enterprise Co., Ltd. 信音企業股份有限公司		
DECIMALS:		TITLE		
X	:±0.5	X	:±2°	DC POWER JACK
X.X	:±0.3	X.X	:±1°	DWN Jie PART NO.2DC3208-002111F
X.XX	:±0.2	CHKD	Lussen	SCALE 1:1 UNIT: mm
		APVD	Liao	SIZE: A3 SHEET:1 OF 2 REV:A
CUSTOMER COPY				

REV.	ECN NO OR DESCRIPTION	REVISED	DATE
A	PDR NO.:T210326-1A	Jie	2021.8.11

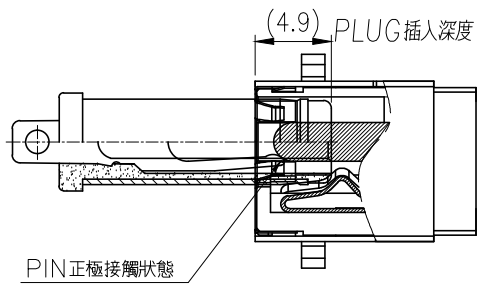
1. GROUND接觸狀態



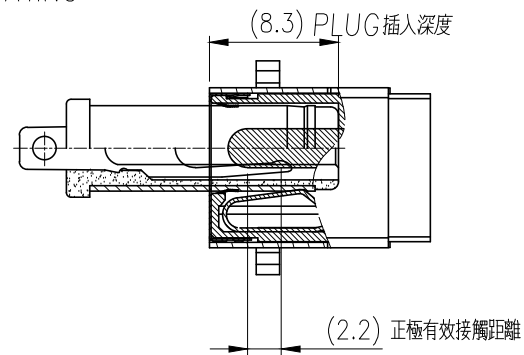
4. LOCK 狀態



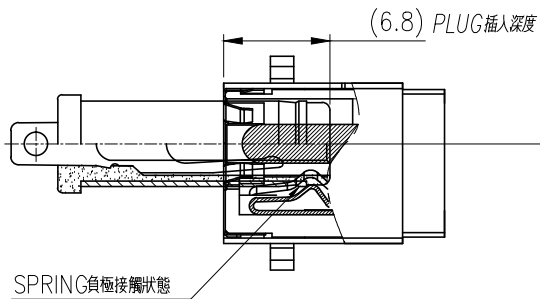
2. PIN正極接觸狀態



5. PLUG FULL MATING



3. SPRING負極接觸狀態



UNLESS OTHERWISE SPECIFIED TOLERANCES

DECIMALS: ANGLES:  
 X :±0.5 X :±2°  
 X.X :±0.3 X.X :±1°  
 X.XX :±0.2



Singatron Enterprise Co., Ltd.  
 信音企業股份有限公司

TITLE	MATING DRAWING		
DWN	Jie	PART NO. 2DC3208-001111F	
CHKD	Lussen	SCALE 4:1	UNIT: mm
APVD	Liao	SIZE: A3	SHEET: 2 OF 2
REV: A			
CUSTOMER COPY			