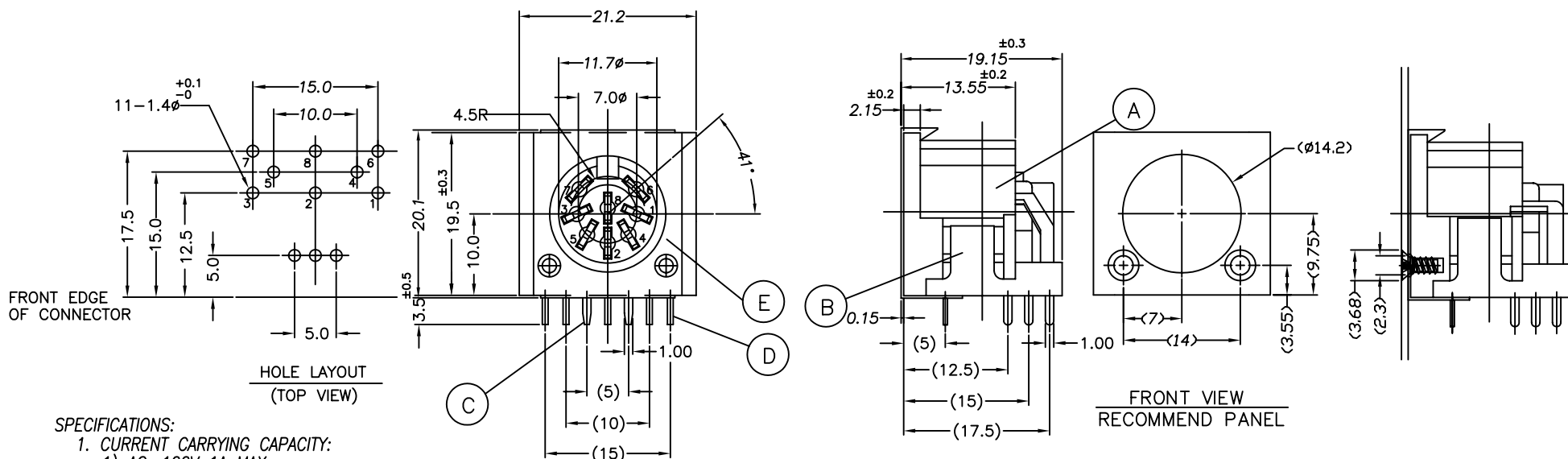
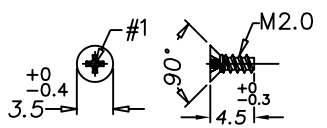
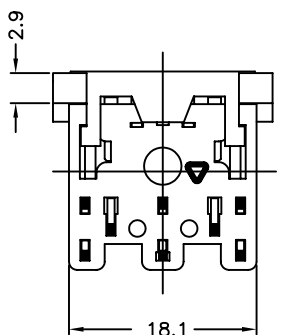


REV.	ECN NO OR DESCRIPTION	REVISED	DATE
A	PRODUCT RELEASE	AMY	2006.03.23

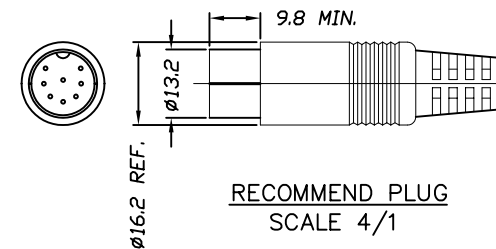


SPECIFICATIONS:

- CURRENT CARRYING CAPACITY:**
 - AC: 100V 1A MAX.
 - DC: 24V 2A MAX.
- CONTACT RESISTANCE:**
 - INITIAL, BEFORE LIFE CYCLE TEST.
PIN TO CONTACTOR: 20mΩ MAX.
PLUG SHIELD TO CONNECTOR: 100mΩ MAX.
 - AFTER LIFE CYCLE TEST.
PIN TO CONTACTOR: 100mΩ MAX.
PLUG SHIELD TO CONNECTOR: 150mΩ MAX.
- INSULATION RESISTANCE:**
BETWEEN ANY ADJACENT OPEN CONTACTS SHALL NOT BE LESS THAN 100MΩ AS SPECIFIED BELOW WITH AT 500V DC INSULATION RESISTANCE TEST.
- DIELECTRIC STRENGTH:**
A POTENTIAL OF 500V AC RMS, 50/60HZ SHALL BE APPLIED BETWEEN ANY OPEN CONTACTS FOR ONE MINUTE WITHOUT BREAKDOWN.
- INSERTION FORCE:** 6.0Kg MAX.
- WITHDRAWAL FORCE:** 1.0Kg MIN.
- LIFE CYCLE TEST:**
CONNECTOR SHALL BE SUBJECT TO 5,000 CYCLES AT 10 TO 20 CYCLES PER MINUTE WITH NO ELECTRICAL LOAD.
- TO CONFORM TO THE "SE-01-001" & "ROHS DIRECTIVE"
- GREEN PRODUCT IDENTIFICATION MARK IN JACK:
- GREEN PRODUCT IDENTIFICATION LABEL IN PACKING: **G.P. PASS**
- FOR LEAD-FREE PRODUCT.
- SOLDER HEAT RESISTANCE: WAVE SOLDERING.
- RECOMMEND SCREW TYPE: M2.0xP0.63 (THE MAX. TORQUE: 1.5kg.cm)



SELF TAPPING SCREW
RECOMMEND SCREW
NOT ATTACHED



RECOMMEND PLUG
SCALE 4/1

NO	DESCRIPTION	QTY	MATERIAL	PLATING & COLOR
E	SHIELDING PLATE	1	PHOSPHOR BRONZE 0.15t	TIN ALLOY PLATING
D	CONTACT TERMINAL	8	BRASS 0.7t	TIN ALLOY PLATING
C	EARTH TERMINAL	1	TI-CU COPPER ALLOY 0.2t	TIN ALLOY PLATING
B	COVER	1	PBT UL 94V-0	LIGHT BLUE (#284C)
A	BODY	1	PBT UL 94V-0	LIGHT BLUE (#284C)

UNLESS OTHERWISE SPECIFIED TOLERANCES

Singatron Enterprise Co., Ltd.
 信音企業股份有限公司

DECIMALS:	ANGLES:	TITLE	8P 262° DIN CONNECTOR		
X : ±0.5	X : ±2°	DWN	AMY 2006.3.23	PART NO. 2DJ-0088-001	
X.X : ±0.3	X.X : ±1°	CHKD	KAN 2006.3.23	SCALE: 2/1	UNIT: mm
X.XX : ±0.2		APVD	ALAN 2006.3.23	SIZE: A3	SHEET: 10F1

CUSTOMER COPY