
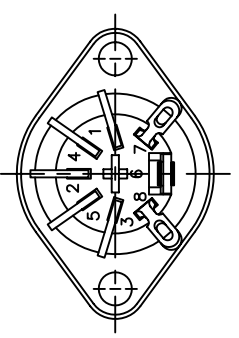
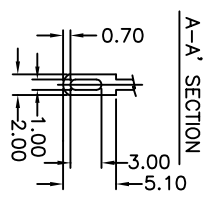
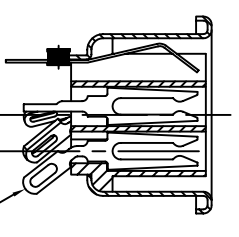
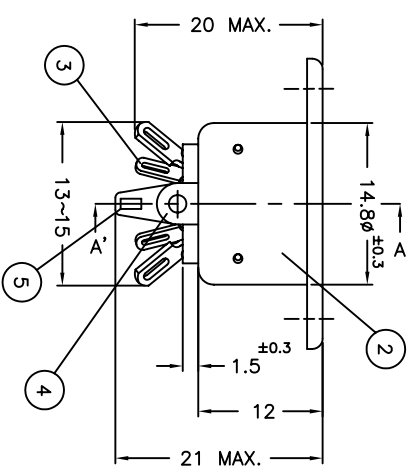
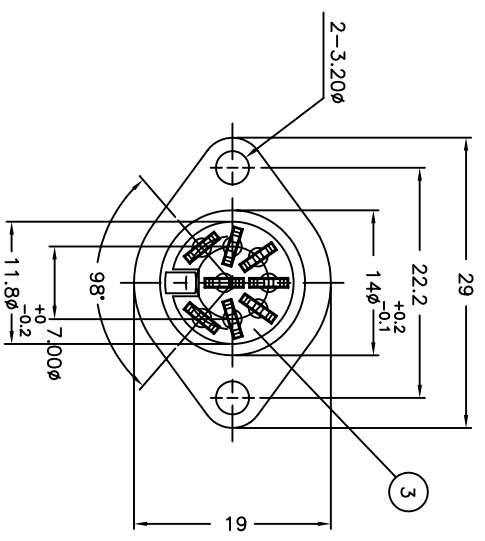


REV.	ECN NO OR DESCRIPTION	REVISED	DATE
D	ECN NO: 950017	EVEN	2006.1.14

- SPECIFICATIONS:**
- CURRENT CARRYING CAPACITY:
 - AC: 100V 1A MAX.
 - DC: 24V 2A MAX.
 - CONTACT RESISTANCE: CONTACTOR TO PLUG PIN: 20mΩ MAX. EARTH TERMINAL TO PLUG SHELL: 100mΩ MAX.
 - INSULATION RESISTANCE: BETWEEN ANY ADJACENT OPEN CONTACTS SHALL NOT BE LESS THAN 100MΩ AS SPECIFIED BELOW WITH AT 500V DC INSULATION RESISTANCE TEST.
 - DIELECTRIC STRENGTH: A POTENTIAL OF 500V AC RMS: 50/60HZ SHALL BE APPLIED BETWEEN ANY OPEN CONTACTS FOR ONE MINUTE WITHOUT BREAKDOWN.
 - INSERTION FORCE: 4.0Kg MAX.
 - WITHDRAWAL FORCE: 0.8kg - 3.5kg.
 - SOLDER HEAT RESISTANCE: WAVE SOLDERING 260°C 10 SECS.
 - TO CONFORM TO THE "SE-01-001" & "ROHS DIRECTIVE"
 - GREEN PRODUCT IDENTIFICATION MARK IN JACK:
 - GREEN PRODUCT IDENTIFICATION LABEL IN PACKING: 
 - FOR WAVE SOLDERING LEAD-FREE PROCESS. **G.P. PASS**



NO	DESCRIPTION	QTY	MATERIAL	PLATING & COLOR
5	RIVET	1	BRASS	NICKEL PLATING
4	EARTH TERMINAL	1	PHOSPHOR BRONZE 0.25t	NICKEL PLATING
3	CONTACTOR	8	BRASS 0.7t	SILVER PLATING
2	SOCKET CASE	1	STEEL PLATE 0.4t	NICKEL PLATING
1	INSULATOR	1	PBT UL 94V-0	BLACK COLOR

UNLESS OTHERWISE SPECIFIED TOLERANCES



TITLE: 5P 180° DIN SOCKET

DECIMALS: ANGLES: X :±0.5 X :±2

X.X :±0.3 X.X :±1°

X.XX :±0.2

DRAWN	DATE	SCALE	UNIT	REVISION
DWN	2006.1.14	2/1	mm	1
CHKD	2006.1.17	2/1	mm	1
APVD	2006.1.17	A3	SHEET: 1 OF 1	REV: D

CUSTOMER COPY