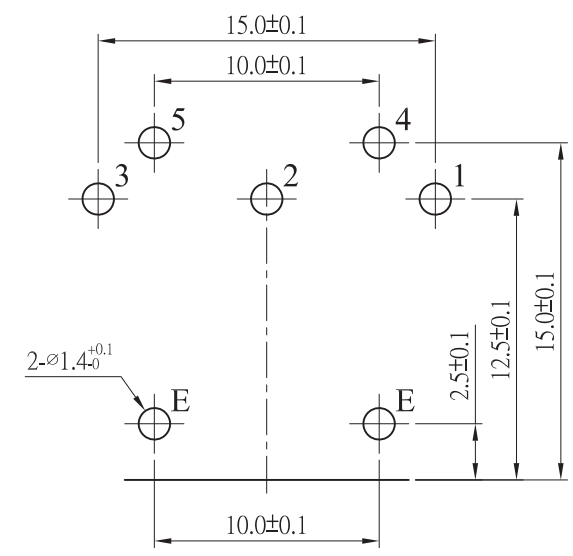
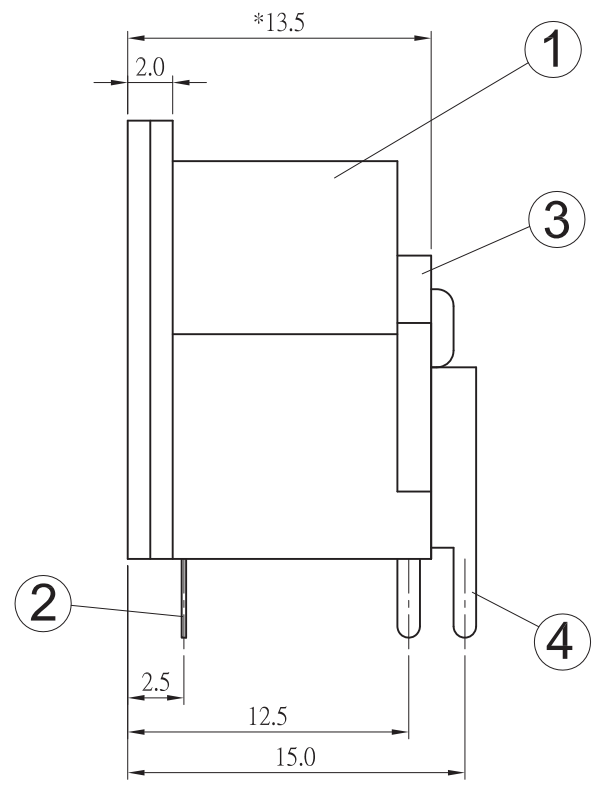
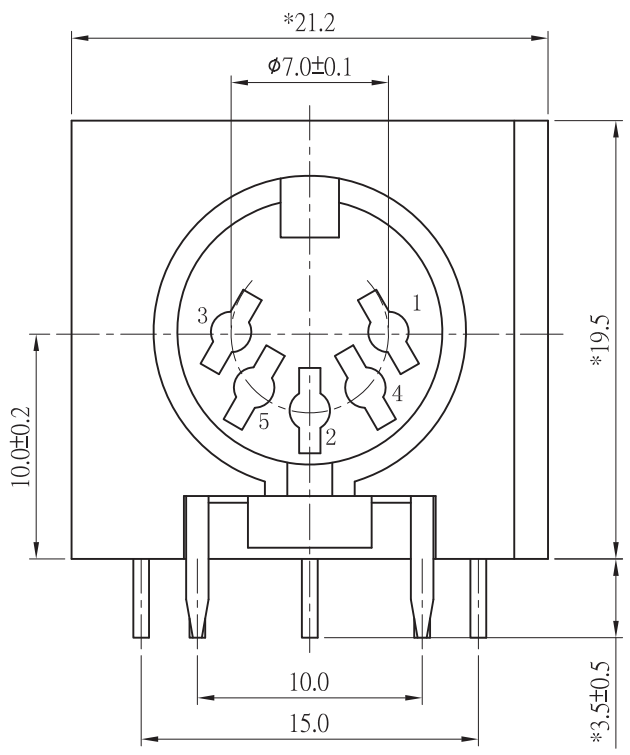


REV	修正原因與尺寸	修訂者	修訂日期
B	圖面修訂	Fu	2016.05.26



PCB LAYOUT
(TOP VIEW)

SPECIFICATIONS:

- CONTACT RESISTANCE : 20m OHMS MAX.
- INSULATION RESISTANCE : D.C. 500V 100M OHM MIN.
- VOLTAGE WITHSTANDING : A.C. 500V 1 MINUTE.
- INSERTION FORCE : 5KG MAX.
- WITHDRAWAL FORCE : 1 -3.5KG.
- LIFE TEST : 5,000 CYCLES MIN. AFTER TESTING , CONTACT RESISTANCE SHALL NOT EXCEED 50m OHM.
- CURRENT RATING : A.C. 100V 2A. D.C. 24V 1A.
- THE OPERATING TEMPERATURE: $-40^{\circ}\text{C} \sim +85^{\circ}\text{C}$.
- (*)CRITICAL DIMENSIONS FOR INSPECTION.
- UNLESS OTHER SPECIFIED, TOLERANCE IS $\pm 0.3\text{mm}$.

P/N	PART NAME	Q'TY	MATERIAL	PLATING	REMARKS
4.	CONTACT TERMINAL	5	BSR-0.5H 0.7 t	TIN PLATED	
3.	PLATE	1	BAKELITE		PL-PEM 1.2t
2.	EARTH TERMINAL	1	PBR 0.25 t	TIN PLATED	
1.	BODY	1	P.B.T		UL94V-0

UNLESS OTHERWISE SPECIFIED TOLERANCES

Singatron Enterprise Co., Ltd.

DECIMALS:	ANGLES:	TITLE	5P CONNECTOR SOCKET (180°)	
X : ± 0.5	X : $\pm 2^{\circ}$	DWN	Rev 2016.5.26	PART NO. 2DJ-DS-015
X.X : ± 0.3	X.X : $\pm 1^{\circ}$	CHKD	Rev 2016.5.26	SCALE 1:1 UNIT: mm
X.XX : ± 0.2		APVD	SIZE: A3	SHEET: 1 OF 1 REV: B

CUSTOMER COPY