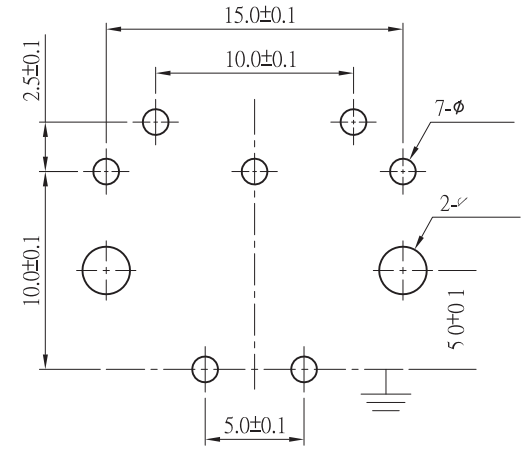
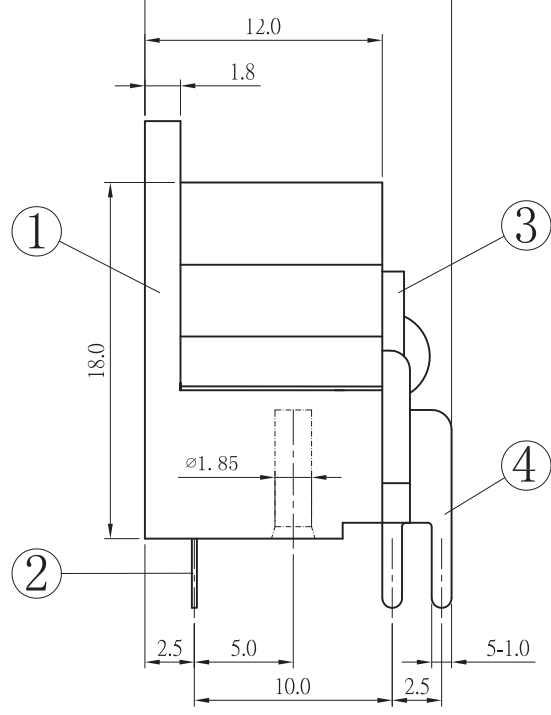
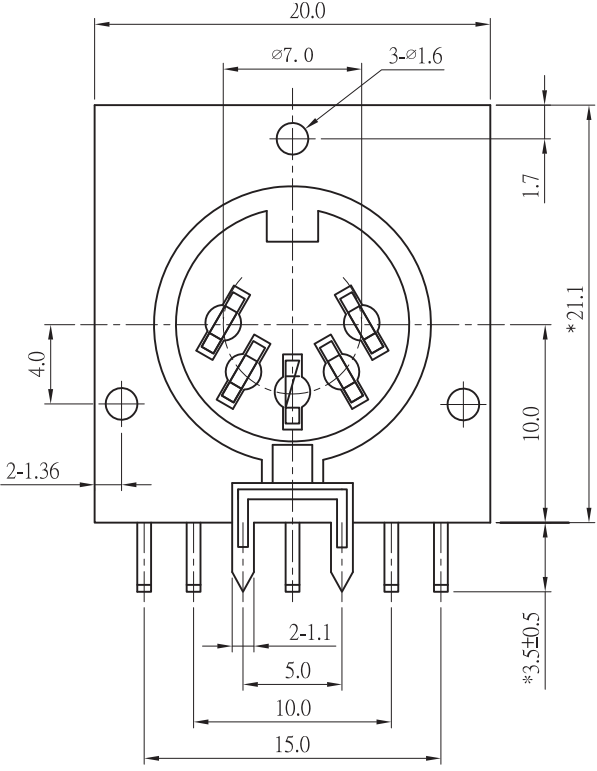


REV	修正原因與尺寸	修訂者	修訂日期
B	圖面修訂	Fu	2016.04.12



PCB LAYOUT  
(TOP VIEW)

SPECIFICATIONS:

- CONTACT RESISTANCE : 20m OHM MAX.
- INSULATION RESISTANCE : 100M OHM AT 500V D.C.
- VOLTAGE WITHSTANDING : AC 500V 1 MINUTE .
- INSERTION FORCE : 5.0KG MAX.
- WITHDRAWAL FORCE : 1-3.5 KG.
- LIFE TEST : 5,000 CYCLES MIN. AFTER TESTING, CONTACT RESISTANCE SHALL NOT EXCEED 100m OHM .
- CURRENT RATING:AC:100V 2A. DC: 24V 1A.
- OPERATING TEMPERATURE : - 40°C ~ +85°C.
- (\*)CRITICAL DIMENSIONS FOR INSPECTION.
- UNLESS OTHER SPECIFIED, TOLERANCE IS ±0.3mm.

P/N	PART NAME	Q'TY	MATERIAL	PLATING	REMARKS
4	CONTACTOR	5	BSR 0.7 t	TIN	
3	PLATE	1	BAKELITE		PL-PEM 1.2t
2	EARTH TERMINAL	1	PBSR 0.2 t	TIN	
1	BODY	1	P.B.T.		UL94V-0

UNLESS OTHERWISE SPECIFIED TOLERANCES

Singatron Enterprise Co., Ltd.

DECIMALS:	ANGLES:	TITLE	DIN-CONNECTOR 5PIN-180°	
X :±0.5	X :±2°	DWN	Fu 2016.04.12	PART NO. 2DJ-DS-025
X.X :±0.3	X.X :±1°	CHKD	Tian 2016.04.12	SCALE 1:1 UNIT: mm
X.XX :±0.2		APVD	SIZE: A3	SHEET:1 OF 1 REV: B

CUSTOMER COPY