

REV.	ECN.NO.	DATE
A	RELEASED	06/11-'09
D	Increasing convex ribs	11/28-'11
E	Shell material changes	10/29-'12

Pin No.	Signal Type	Pin No.	Signal Type
1	In	11	GND
2	GND	12	In
3	In	13	CONFIG(see note 1)
4	In	14	CONFIG(see note 1)
5	GND	15	I/O
6	In	16	GND
7	In	17	I/O
8	GND	18	Out
9	In	19	RTN
10	In	20	Power Out(see note 2)

**NOTES:**

**\*Material**

Housing:LCP+50%G.F., UL94V-0 Rated;Color:Black.  
 Shield: Brass.  
 Plating: Ni(40u" Min.) Plating .  
 Contact: Brass.  
 Plating: Au plating on contact area;  
 Sn(100u" Min.) plating on solder tail;  
 Ni(40u" Min.) underplating overall.

**\*Electrical Specification**

Operation Voltage: 40 VAC max.  
 Current Rating: 0.5 Ampere per contact  
 Contact Resistance: 30 Milliohms max.  
 Insulation Resistance: 100 Megohms min.  
 Dielectric Withstanding Voltage: 500 VDC

**\*Environmental**

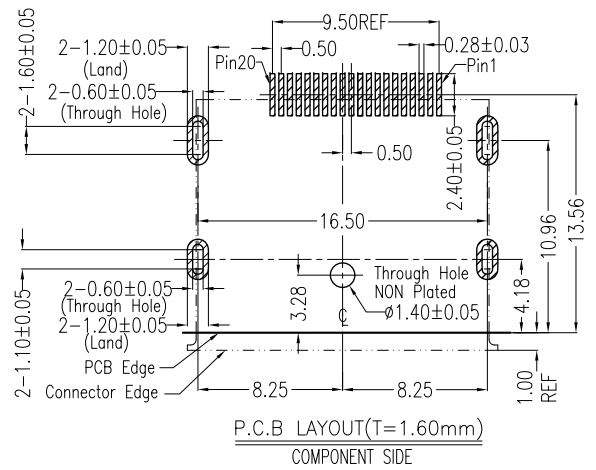
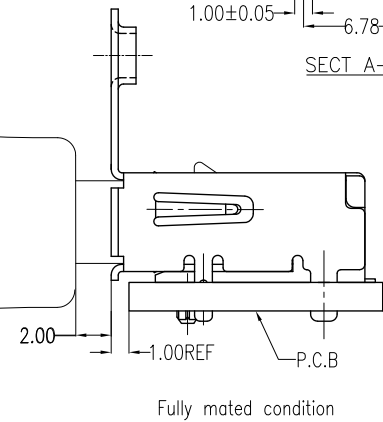
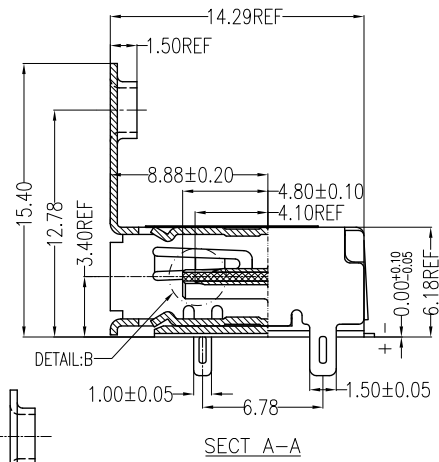
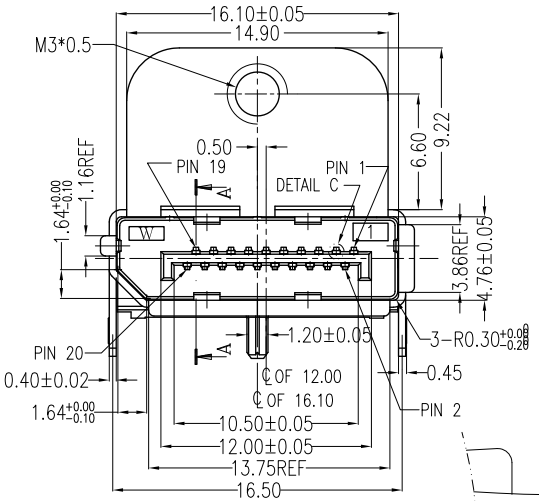
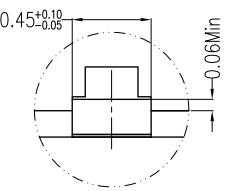
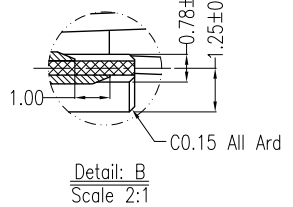
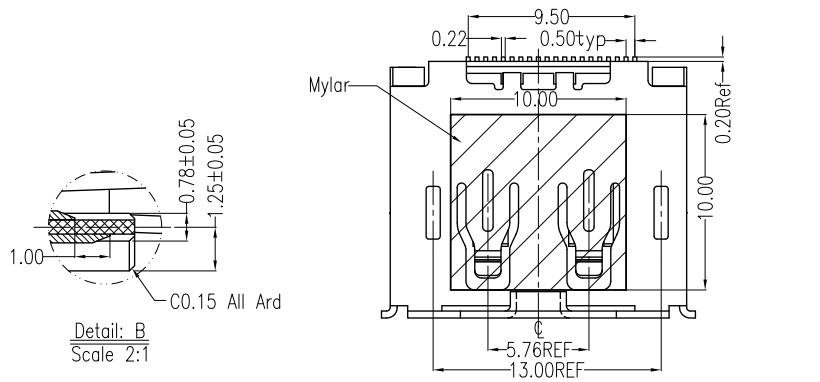
Operating Temperature: -20°C to +85°C

**\*Mechanical**

Female Screw Lock Torque:3Kgf-cm Max.

**\*How To Order**

2DPP-020-R3S-02  
 Au F:>0.8u"  
 1:5u" 5:15u" 3:30u"  
 Number of Contacts  
 Series NO.



UNLESS OTHERWISE SPECIFIED TOLERANCES		Singatron Enterprise Co., Ltd.			
DECIMALS:	ANGLES:	TITLE	DisplayPort Receptacle (Female) SMT Type(With Flange)		
X :±0.5	X :±2°	DWN	Jul10/29-'12	PART NO.	2DPP-020-R3S-02
X.X :±0.3	X.X :±1°	CHKD	Mar10/29-'12	SCALE 1:1	UNIT: mm
X.XX :±0.2		APVD	Jan10/29-'12	SIZE: A3	SHEET:1 OF 1 REV: E
<b>CUSTOMER COPY</b>					