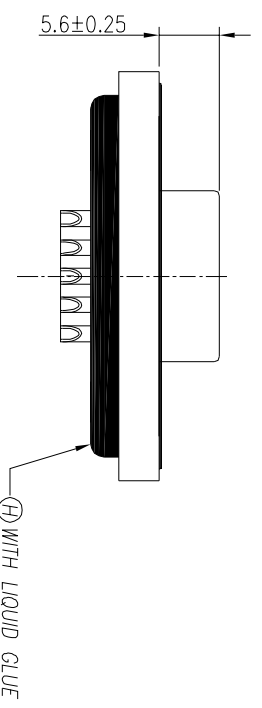
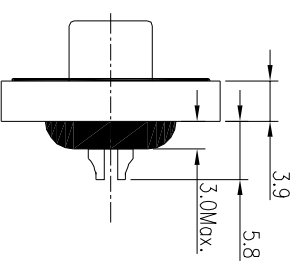
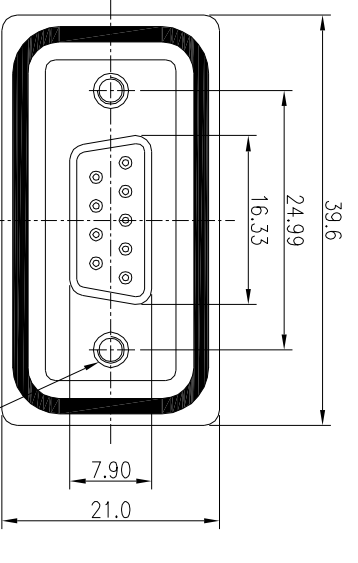
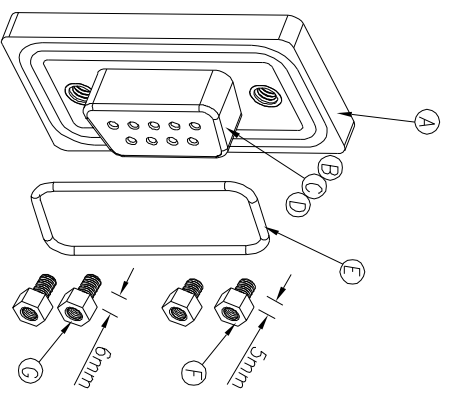
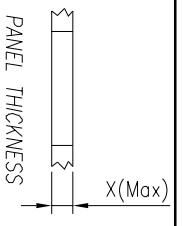


REV.	ECN NO OR DESCRIPTION	REVISED	DATE
A	PDR NO.:T220414-1A	JAY	2023.04.25

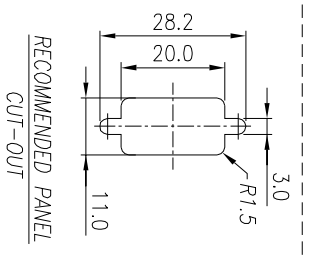


NOTES:

1. WATERPROOF RATE: IP68(WHEN PROPERLY MATED)  
IP67: IMMersed IN 1M WATER FOR 24 HOURS
2. DO MATING TEST AFTER GLED
3. SIGNAL CONTACT CURRENT RATING: 5.0 AMPS.
4. VOLTAGE RATING: 120V AC.
5. DIELECTRIC WITHSTANDING VOLTAGE: AC 1000 V R.M.S
6. INSULATION RESISTANCE: 100 MEGOHMS MINIMUM,AT DC 500V.
7. CONTACT RESISTANCE: 25 MILLIOHMS MAXIMUM.
8. OPERATING TEMPERATURE: -40°C TO+105°C.
9. OTHER GENERAL SPEC. TO REFER "D-SUB SERIES SPEC."
10. TO CONFORM TO SINGAITRON HAZARDOUS SUBSTANCE FREE SPEC.
11. GREEN PRODUCT IDENTIFICATION LABEL ON PACKAGING: **G.P. PASS**



SCREW L=5.0 FOR PANEL THICKNESS UNDER 1.2mm  
SCREW L=6.0 FOR PANEL THICKNESS BETWEEN 1.2~2.0mm



NO	DESCRIPTION	QTY	MATERIAL	PLATING & COLOR
A	BODY	1	Nylon+GF	BLACK
B	INSULATOR	2	PBT	BLACK
C	SHELL	2	COLD ROLLER STEEL	NI PLATED
D	FEMALE PIN	9	Phosphor Bronze	GOLD PLATED
E	O-RING	1	SILICONE	LIGHT BLUE
F	SCREW	2	Bross	Ni Plated 80u
G	SCREW	2	Bross	Ni Plated 80u
H	LIQUID GLUE	1	Epoxy	BLACK

UNLESS OTHERWISE SPECIFIED TOLERANCES

DECIMALS:	ANGLES:
X :±0.5	X :±2°
X.X :±0.3	X.X :±1°
X.XX :±0.2	

TITLE	D-SUB 9 PIN FEMALE CONN FEMALE PIN FOR SOLDER TYPE
DWN	JAY
CHKD	MF
APVD	JF
PART NO.	2DS33002-M093U0H
SCALE:	2:1
UNIT:	mm
SHEET:	1 OF 1
REV:	A

CUSTOMER COPY