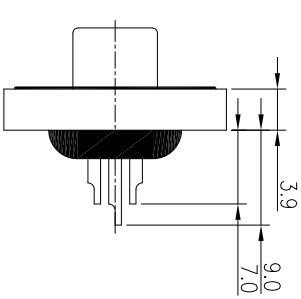
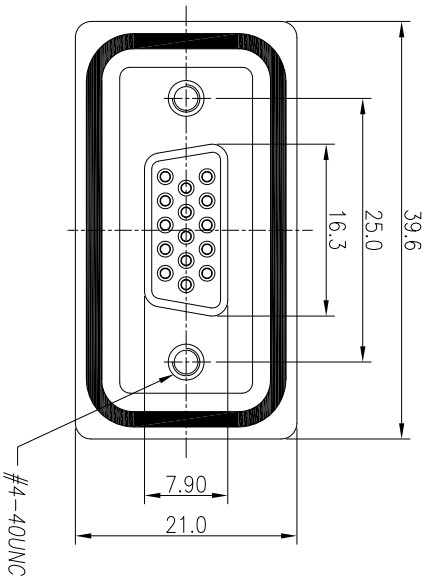
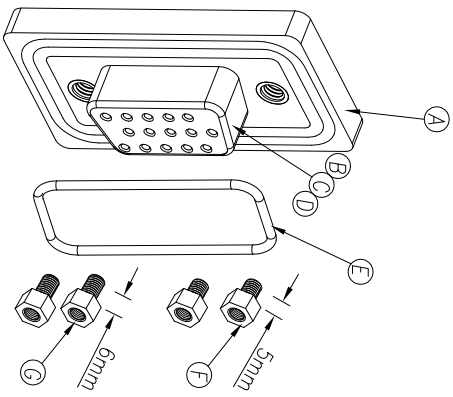
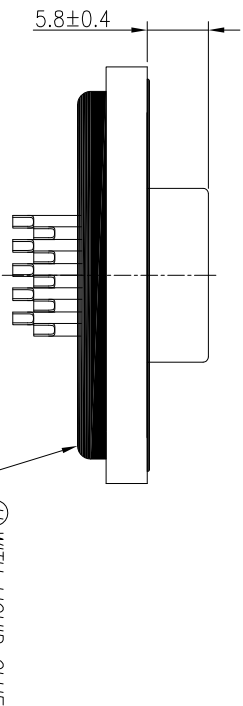


REV.	ECN NO OR DESCRIPTION	REVISED	DATE
A	PDR NO.:S110330-5I	Glen	2011.03.17
B	ECN NO.:S110705-2	Shawn	2011.07.21

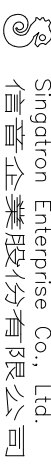


NOTES:

1. WATERPROOF RATE: IP68(WHEN PROPERLY MATED)
2. DO MATING TEST AFTER GLUED
3. SIGNAL CONTACT CURRENT RATING: 2.0 AMPS.
4. VOLTAGE RATING: 120V AC.
5. DIELECTRIC WITHSTANDING VOLTAGE: AC 1000 V R.M.S
6. INSULATION RESISTANCE: 100 MEGOHMS MINIMUM,AT DC 500V.
7. CONTACT RESISTANCE: 25 MILLIOHMS MAXIMUM.
8. OPERATING TEMPERATURE: -40°C TO+105°C.
9. OTHER GENERAL SPEC. TO REFER "D-SUB SERIES SPEC."
10. TO CONFORM TO SINGATRON HAZARDOUS SUBSTANCE FREE SPEC.
11. GREEN PRODUCT IDENTIFICATION LABEL ON PACKAGING: **G.P. PASS**



H	LIQUID GLUE	1	N/A	BLACK
G	SCREW	2	Brass	Ni-Plated 80u
F	SCREW	2	Brass	Ni-Plated 80u
E	O-RING	1	SILICONE	LIGHT BLUE
D	FEMALE PIN	15	Phosphor Bronze	GOLD PLATED
C	SHELL	2	COLD ROLLER STEEL	NI PLATED
B	INSULATOR	2	PBT	BLACK
A	D-SUB 9 PIN CORE	1	Nylon+33%GF	BLACK
NO	DESCRIPTION	QTY	MATERIAL	PLATING & COLOR



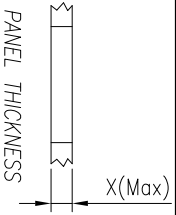
UNLESS OTHERWISE SPECIFIED TOLERANCES

DECIMALS: ANGLES:

X :±0.5 X :±2°

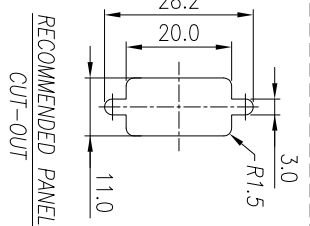
X.X :±0.3 X.X :±1°

X.XX :±0.2



SCREW L=5.0 FOR PANEL THICKNESS UNDER 1.2mm

SCREW L=6.0 FOR PANEL THICKNESS BETWEEN 1.2~2.0mm



RECOMMENDED PANEL CUT-OUT

CUSTOMER COPY