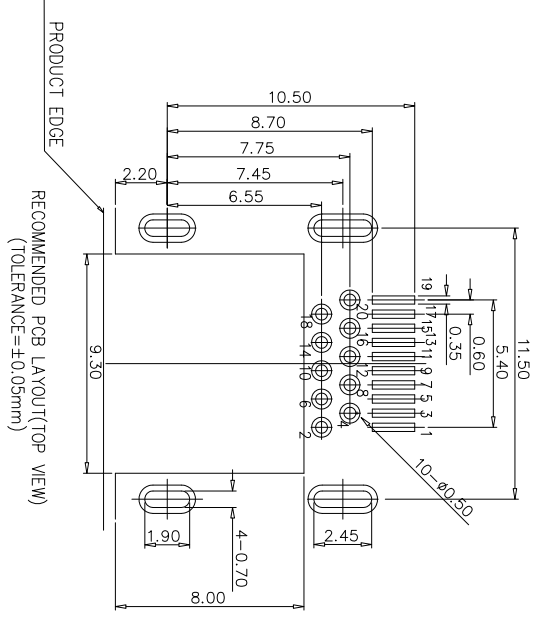
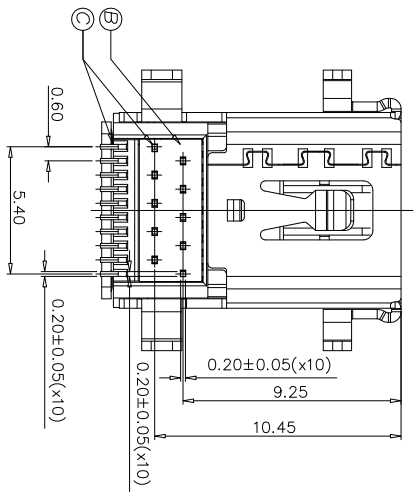
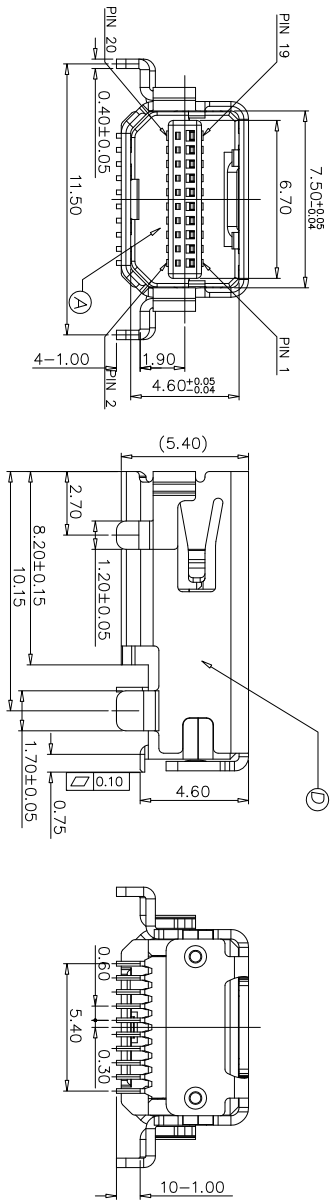
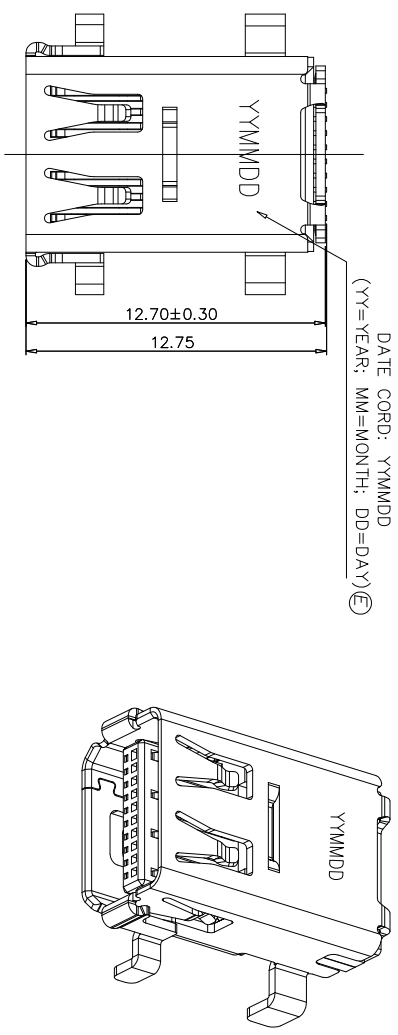


REV.	ECN NO. OR DESCRIPTION	REVISED	DATE
A	PDR RELEASE	IVY-C	2013.10.24

DATE CORO: YYMMDD
(YY=YEAR; MM=MONTH; DD=DAY) (E)



SPECIFICATIONS:

- ELECTRICAL CHARACTERISTICS:
 - CURRENT RATING: 0.5 AMP.
 - VOLTAGE RATING: 40V.
 - CONTACT RESISTANCE: 30mΩ MAX.
 - INSULATION RESISTANCE: 100MΩ MIN. @ 500V DC.
 - DIELECTRIC WITHSTANDING VOLTAGE: 500V AC FOR 1 MINUTE.
- MECHANICAL CHARACTERISTICS:
 - INSERTION FORCE: 4.5Kgf MAX.
 - WITHDRAWAL FORCE: 1.0~4.0Kgf.
- LIFE TEST: 10,000 CYCLES.
- OTHER GENERAL SPEC. TO REFER "DISPLAY PORT SERIES SPEC".
- TO CONFORM TO THE SINGATRON HAZARDOUS SUBSTANCE FREE SPEC.
- HALOGEN FREE PRODUCT IDENTIFICATION LABEL ON PACKAGING.
- PACKAGE: SEE "2DT1521 SERIES " PACKAGE.
- FOR REFLOW SOLDERING LEAD-FREE PROCESS.



PART NO.
2DT1521-000111F

- SUFFIX: HALOGEN FREE
- PACKAGE
- TAPE AND REEL
- HOUSING COLOR
- BLACK
- CONTACT PLATING
- 1: GOLD FLASH PLATED ON CONTACT AREA, GOLD FLASH ON SOLDER AREA, NICKEL UNDERPLATED OVERALL.

NO	DESCRIPTION	QTY	MATERIAL	PLATING & COLOR
E	INK	-		BLACK
D	SHELL	1	STAINLESS STEEL	NICKEL PLATED
C	CONTACT	20	COPPER ALLOY	SEE PART NO.
B	COVER	1	HIGH TEMP. THERMO-PLASTIC, UL 94V-0	BLACK
A	HOUSING	1	HIGH TEMP. THERMO-PLASTIC, UL 94V-0	BLACK

Singatron Enterprise Co., Ltd.
信音企業股份有限公司

DECIMALS:	ANGLES:	TITLE	SCALE	UNIT:	REV:
X : ±0.5	X : ±2°	MINI DISPLAY PORT RECEPTACLE, SINKING, CH=1.90mm	1:1	mm	A
X.X : ±0.3	X.X : ±1°				
X.XX : ±0.2					

CUSTOMER COPY