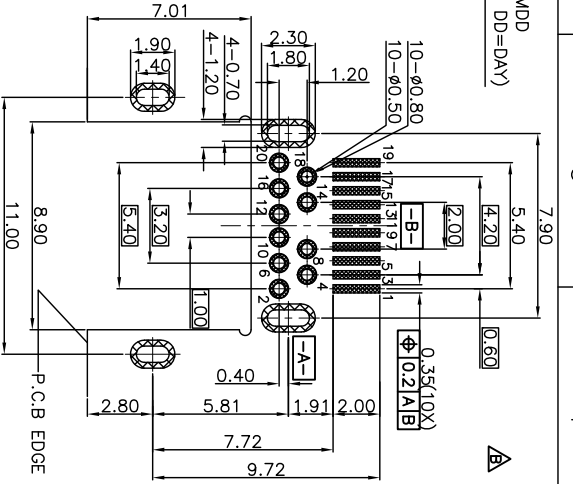
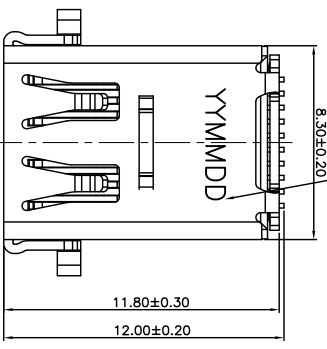


DATE CORD: YYMMDD  
(YY=YEAR; MM=MONTH; DD=DAY)



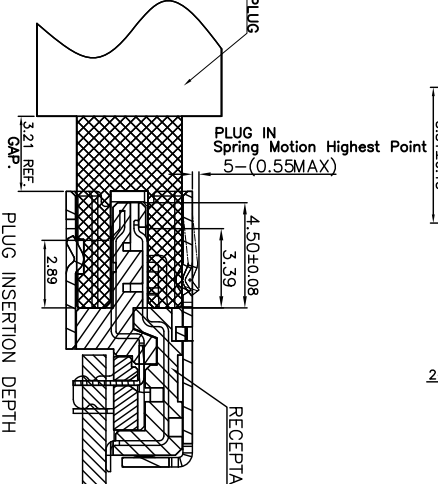
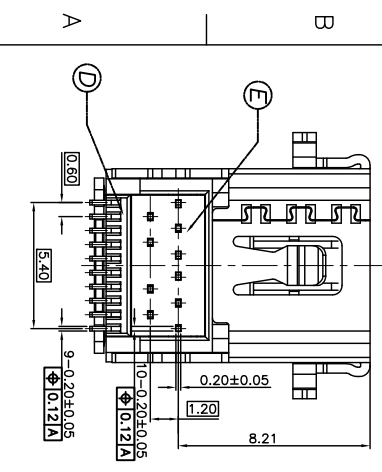
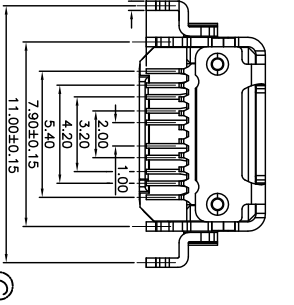
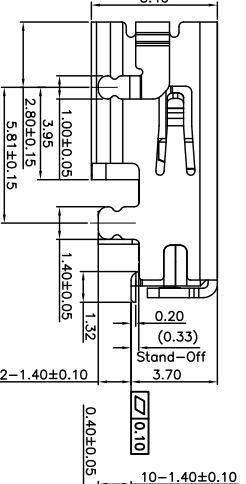
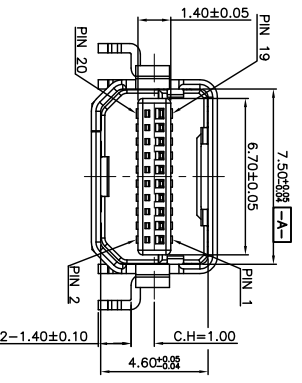
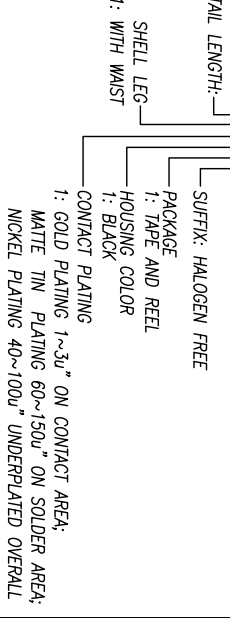
PIN	SIGNAL TYPE	PIN NAME
1	GND	GND
3	Out	M_Lane 0(b)
5	Out	M_Lane 0 (c)
7	GND	GND
9	Out	M_Lane 1 (a)
11	Out	M_Lane 1 (c)
13	GND	GND
15	Out	M_Lane 2 (a)
17	Out	M_Lane 2 (c)
19	GND	GND
2	IN	Hot Plug Detect
4	CFG	CONFG 1
6	CFG	CONFG 2
8	GND	GND
10	Out	M_Lane 3(a)
12	Out	M_Lane 3(c)
14	GND	GND
16	I/O	AUX_CH(a)
18	I/O	AUX_CH(c)
20	PMR Out	DP_PMR

- SPECIFICATIONS:**
- ELECTRICAL CHARACTERISTICS:
    - CURRENT RATING: 0.5 AMP.
    - VOLTAGE RATING: 40V.
    - CONTACT RESISTANCE: 10mΩ MAX.
    - INSULATION RESISTANCE: 100MΩ MIN. @ 500V DC.
    - DIELECTRIC WITHSTANDING VOLTAGE: 500V AC FOR 1 MINUTE.
  - MECHANICAL CHARACTERISTICS:
    - INSERTION FORCE: 4.5kgf MAX.
    - WITHDRAWAL FORCE: 1.0~4.0kgf.
  - LIFE TEST: 10,000 CYCLES.
  - OTHER GENERAL SPEC. TO REFER "2DT1522 SERIES SPEC."
  - TO CONFORM TO THE SINGATRON HAZARDOUS SUBSTANCE FREE SPEC.
  - HALOGEN FREE PRODUCT IDENTIFICATION LABEL ON PACKAGING.
  - PACKAGE: SEE "2DT1522-011111F" PACKAGE.
  - FOR REFLOW SOLDERING LEAD-FREE PROCESS.

**PART NO.**

2DT1522-011111F

TERMINAL/Shell TAIL LENGTH:  
1 : 1.40mm



NO	DESCRIPTION	QTY	MATERIAL	PLATING & COLOR
F	INK	-	INK	BLACK
E	COVER	1	LCP E130I, UL94V-0	BLACK
D	MOLDING	1	LCP E130I, UL94V-0	BLACK
C	SHELL	1	SUS304-1/2H, 0.4t	BLACK NICKEL PLATED 50μ" MIN
B	CONTACT	20	C2680-H, 0.2t	SEE PART NO.
A	HOUSING	1	LCP E130I, UL94V-0	BLACK
NO	DESCRIPTION			

UNLESS OTHERWISE SPECIFIED TOLERANCES

DECIMALS: ANGLES:

X : ±0.5 X : ±2°  
X.X : ±0.3 X.X : ±1°  
X.XX : ±0.2 X.XX : ±1°

Singatron Enterprise Co., Ltd.  
信音企業股份有限公司

TITLE MINI DISPLAY PORT RECEPTACLE, SINKING, C.H=1.00mm  
DWG IN-C 2015.12.24 PART NO. 2DT1522-011111F  
CHKD ANCELAB015.12.24 SCALE 1:1 UNIT: mm  
APVD ANCELAB015.12.24 SIZE: A3 SHEET: 1 OF 1 REV: B

**CUSTOMER COPY**

REV.	ECN NO	OR DESCRIPTION	REVISED	DATE
A	PDR RELEASE		IV-C	2015.03.10
B	ECN NO: L150152		IV-C	2015.12.24