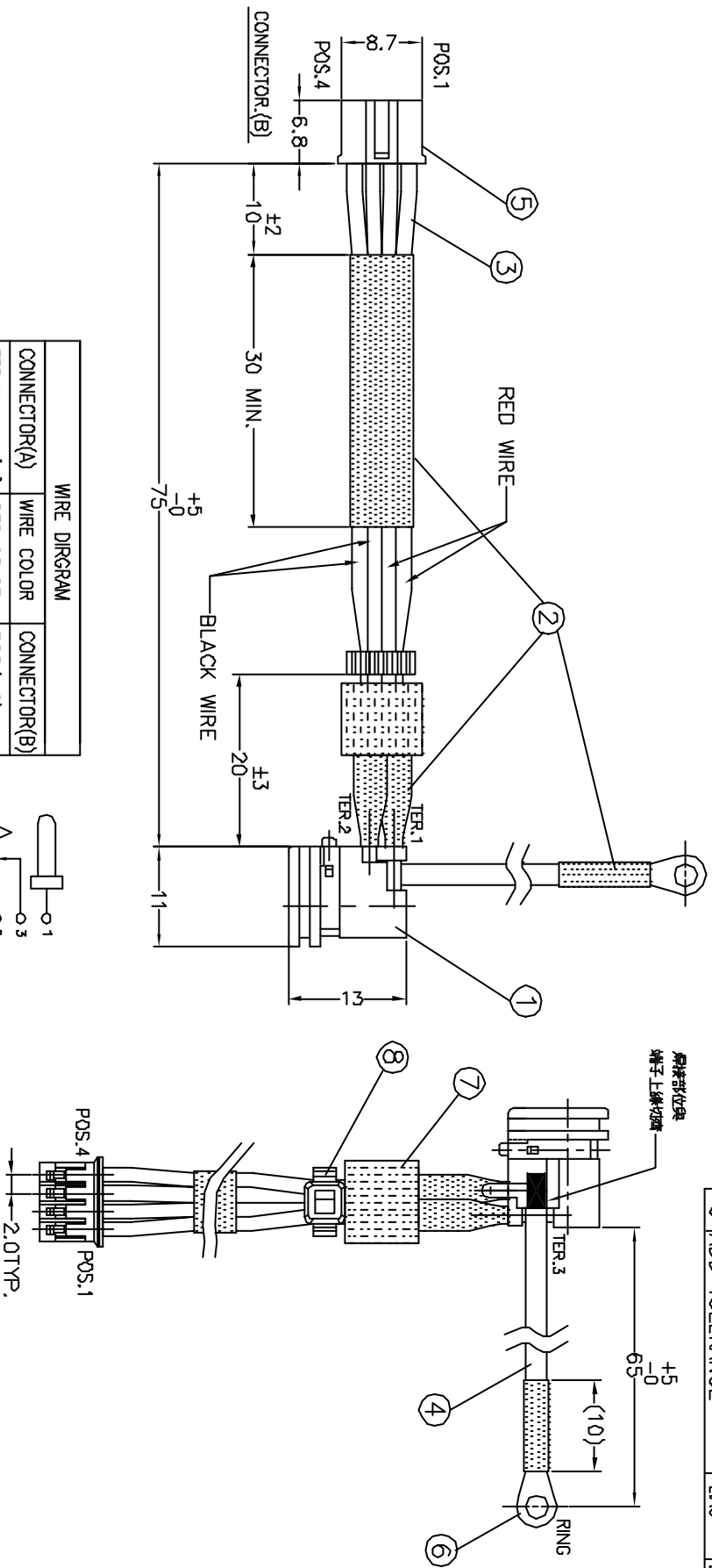
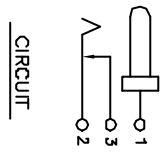


REV.	ECN NO OR DESCRIPTION	REVISED	DATE
F	ECN 930001	LAO	1/13-'04
G	ADD TOLERANCE	LAO	2/19-'04



WIRE DIAGRAM			
CONNECTOR(A)	WIRE COLOR	CONNECTOR(B)	
TERMINAL 1 (+)	RED COLOR	POS.(1,2)	
TERMINAL 2 (-)	BLACK COLOR	POS.(3,4)	
TERMINAL 3 (-)	BLACK COLOR	RING	



- SPECIFICATIONS:**
1. RATING: DC 20V 4A
 2. CONNECT(A) INSERTION FORCE: 2Kg 4A WITHDRAWAL FORCE: 0.5Kg~1.5Kg
 3. CONNECT(B) SINGLE CONTACT RETENTION FORCE: 2.0Kg MIN.
 4. INSULATION RESISTANCE BETWEEN ANY ADJACENT TERMINALS SHALL NOT BE LESS THAN 100 MEGOHMS BY 500 VOLTS MEGGER.
 5. JACK SHALL WITHSTAND 500 VOLTS BETWEEN ANY ADJACENT TERMINAL FOR ONE MINUTE.
 6. CONTACT RESISTANCE SHALL NOT EXCEED 0.03 OHMS.
 7. JACK SHALL WITHSTAND 5,000 CYCLES OF INSERTION AND WITHDRAWAL WITH TESTING PLUG, AND CONTACT RESISTANCE SHALL NOT EXCEED 0.06 OHMS.
- MEASURING CONDITION:**
- TEMPERATURE: FROM 5°C TO 35°C.
RELATIVE HUMIDITY: FROM 40% TO 85%.

NO	DESCRIPTION	QTY	MATERIAL	PLATING & COLOR
1	DC POWER JACK	1	SEE SINGATRON P/N 2DC-0334100*	
2	HEAT SHRINKABLE TUBING	1	POLYOLEFIN	BLACK
3	WIRE	4	UL 1007 #18 AWG	SEE WIRE DIAGRAM*
4	WIRE	1	UL 1007 #18 AWG	SEE WIRE DIAGRAM*
5	HOUSING	1	NYLON 66 UL 94V-0	WHITE
6	RING	1	OD:φ4.5 ID:φ2.5	TIN ALLOY PLATING
7	CORE	1	9φ*5φ*8L	BLACK
8	CABLE TIE	1	L:63.7*W:2.4	WHITE

UNLESS OTHERWISE SPECIFIED TOLERANCES

DECIMALS: ANGLES:

X.XX ±0.3 X ±.2
X.XX ±0.2 X.X ±.1
X.XX ±0.1