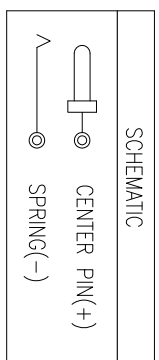
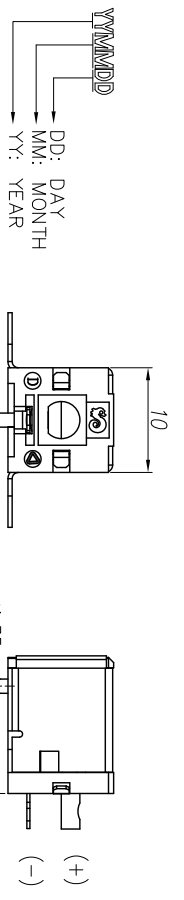
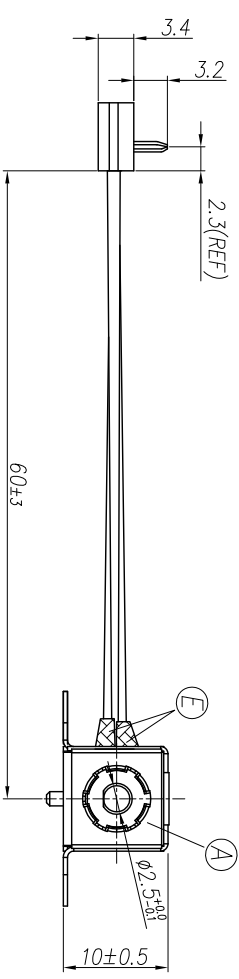
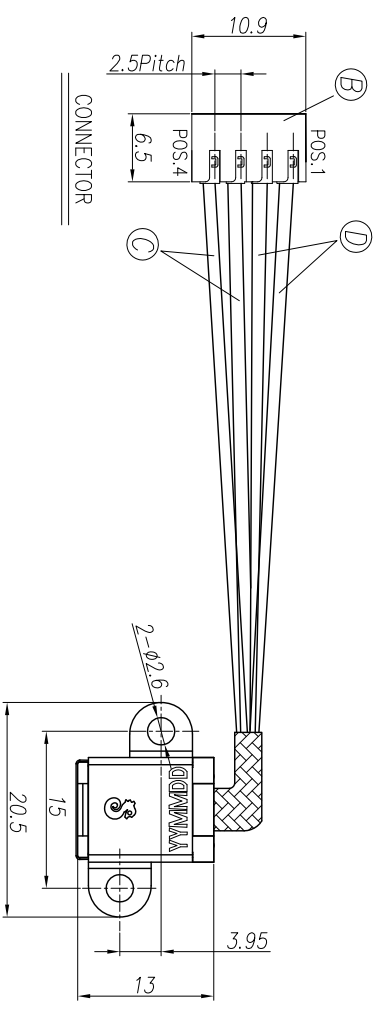
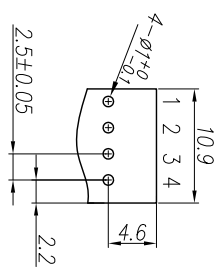
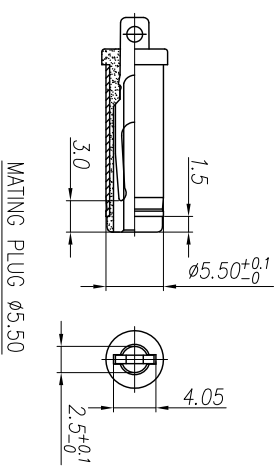


REV.	ECN NO OR DESCRIPTION	REVISED	DATE
A	PDR NO:1091021-1A	Summer	2010.06.04



WIRE DIAGRAM		
DC POWER JACK	WIRE COLOR	CONNECTOR
CENTER PIN(+)	RED	POS.(3,4)
SPRING(-)	BLACK	POS.(1,2)



PCB LAYOUT

- SPECIFICATIONS:
1. ELECTRICAL CHARACTERISTICS:
- 1-1. RATING: 20V 7A
 - 1-2. CONTACT RESISTANCE: 30mΩ MAX. (INITIAL)
 - 1-3. DIELECTRIC WITHSTANDING VOLTAGE: 250V AC FOR ONE MINUTE.
 - 1-4. INSULATION RESISTANCE: 100MΩ MIN. MEASURED BY 500V DC.
2. MECHANICAL CHARACTERISTICS:
- 2-1. INSERTION FORCE: 3.5 Kgf
 - 2-2. WITHDRAWAL FORCE: 0.5~3.5 Kgf
 - 3. LIFE TEST: 5000 CYCLES MIN.
4. OTHER GENERAL SPEC. TO REFER "2DC-G233-B38 SPEC".
5. TO CONFORM TO SINGATRON HAZARDOUS SUBSTANCE FREE SPEC.
6. GREEN PRODUCT IDENTIFICATION MARK ON JACK:
7. GREEN PRODUCT IDENTIFICATION LABEL ON PACKAGING: **G.P. PASS**

NO	DESCRIPTION	QTY	MATERIAL	PLATING & COLOR
A	DC POWER JACK	1	TO SEE SINGATRON DC JACK P/N: 2DC-G233-B38	
E	HEAT SHRINK TUBE	2	FOLYOLEFEN φ3.5(125'.600V)	BLACK
D	WIRE	2	UL1430 22AWG	BLACK
C	WIRE	2	UL1430 22AWG	RED
B	CONNECTOR	4	TERMINAL: BRASS	TIN-PLATED
		1	HOUSING: Nylon66 UL94V-0	WHITE

UNLESS OTHERWISE SPECIFIED TOLERANCES

DECIMALS: ANGLES:

X : ±0.5 X : ±2°

X.X : ±0.3 X.X : ±1'

X.XX : ±0.2

TITLE	DC JACK WITH WIRE		
DWN	Summer	PART NO. 2DW-G233-B71	
CHKD	Quan	SCALE: --	UNIT: mm
APVD	Max	SIZE: A3	SHEET: 1 OF 1 REV: A

CUSTOMER COPY

Singatron Enterprise Co., Ltd.
信音企業股份有限公司