

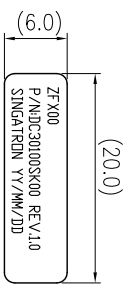
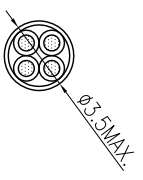
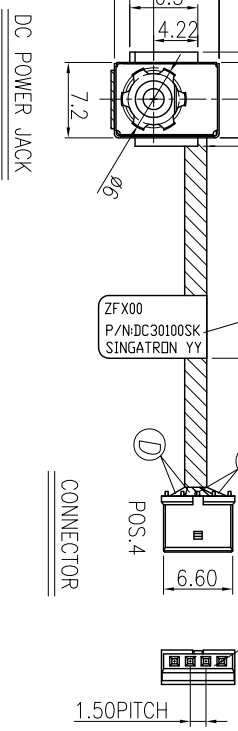
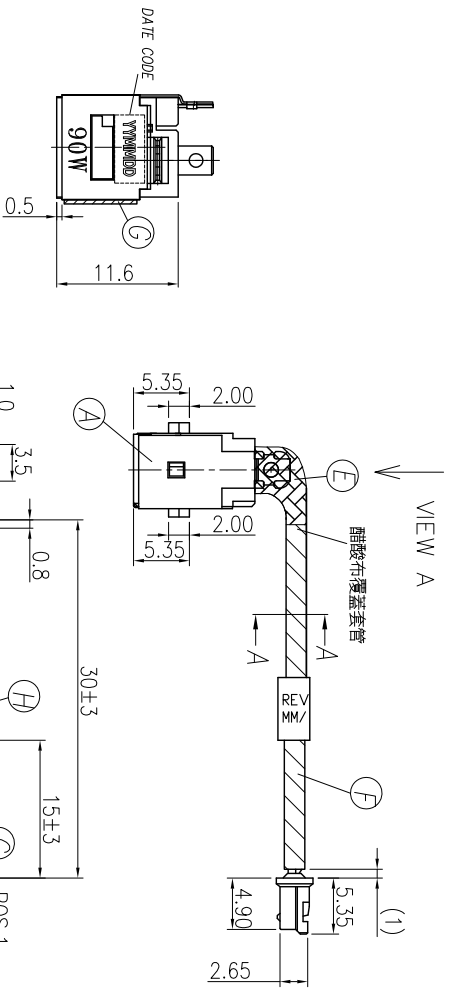
| | | | | |
|--------|--------------------|-------------------------|---------|-----------|
| REV. A | ECN NO. T140423-8A | OR DESCRIPTION Springwu | REVISED | DATE |
| | | | | 2014.9.25 |

1. ELECTRICAL CHARACTERISTICS:
 1-1. RATING: 20V 6A
 1-2. CONTACT RESISTANCE: 30mΩ MAX. (INITIAL) (ONLY FOR DC JACK)
 1-3. DIELECTRIC WITHSTANDING VOLTAGE: 250V AC FOR ONE MINUTE.
 1-4. INSULATION RESISTANCE: 100MΩ/MIN. MEASURED BY 500V DC.

2. MECHANICAL CHARACTERISTICS:
 2-1. INSERTION FORCE: 3.5kgf MAX.
 2-2. WITHDRAWAL FORCE: 0.5~3.5kgf.
 3. LIFE TEST: 5000 CYCLES MIN.

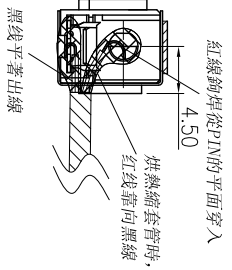
4. OTHER GENERAL SPEC. TO REFER "20C-G756-BA6F SPEC."
 5. TO CONFORM TO SINGATRON HAZARDOUS SUBSTANCE FREE SPEC.
 6. HALOGEN FREE PRODUCT IDENTIFICATION MARK ON JACK.

7. HALOGEN FREE PRODUCT IDENTIFICATION LABEL ON PACKAGING:
 8. PRINTED DATE CODE "YYMMDD" ON TOP OF CONNECTOR.
 DATE CODE: YY: YEAR MM: MONTH DD: DAY
 9. THE PANEL'S ID MUST BE GREATER THAN THE PLUG'S OD WHICH MUST HAVE A DIFFERENCE OF LESS THAN OR EQUAL TO 0.5 mm. (AS SHOWN IN FIGURE 1.)

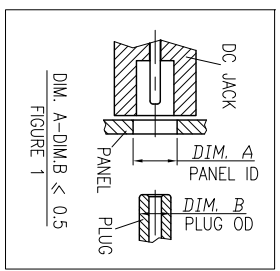


SECTION A-A
 NO SCALE

LABEL

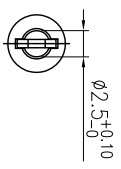
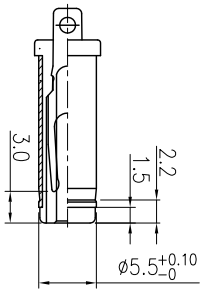


VIEW A



WIRE DIAGRAM

| | | |
|---------------|------------|-----------|
| DC POWER JACK | WIRE COLOR | CONNECTOR |
| CENTER PIN(+) | RED | POS.(1,2) |
| SPRING(-) | BLACK | POS.(3,4) |



| NO | DESCRIPTION | QTY | MATERIAL | PLATING & COLOR |
|----|---------------------|-----|---------------------------|-----------------|
| A | DC POWER JACK | 1 | DC JACK P/N:20C-G756-BA6F | |
| B | CONNECTOR | 4 | TER-COPPER ALLOY | TIN-PLATED |
| C | WIRE | 2 | UL10368 26AWG | RED |
| D | WIRE | 2 | UL10368 26AWG | BLACK |
| E | HEAT SHRINK TUBE | 2 | Ø3.5*8 | BLACK |
| F | ACETATE TAPE | 1 | W8*10.12 | BLACK |
| G | CONDUCTIVE ADHESIVE | 1 | L7-2*W5 | WHITE |
| H | LABEL | 1 | L20*W6 | WHITE |

UNLESS OTHERWISE SPECIFIED TOLERANCES

| | |
|-------------|-----------|
| DECIMALS: | ANGLES: |
| X : ±0.5 | X : ±2° |
| X.X : ±0.3 | X.X : ±1' |
| X.XX : ±0.2 | |

TITLE: DC POWER JACK + WIRE
 DWN: Springwu
 CHKD: Sky
 APVD: Lussen

SINGATRON Enterprise Co., Ltd.
 信晉企業股份有限公司

PART NO. 2DW-G756-BD8F
 SCALE: --
 SIZE: A3
 SHEET: 1 OF 1

CUSTOMER COPY

