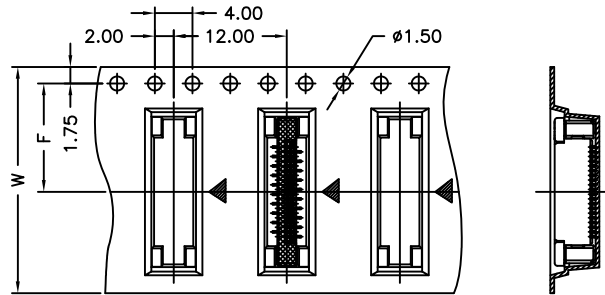
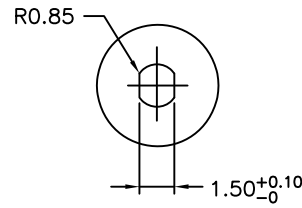
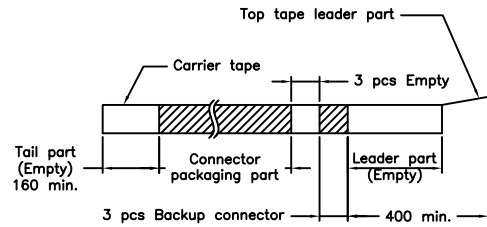
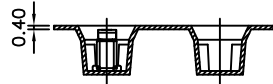




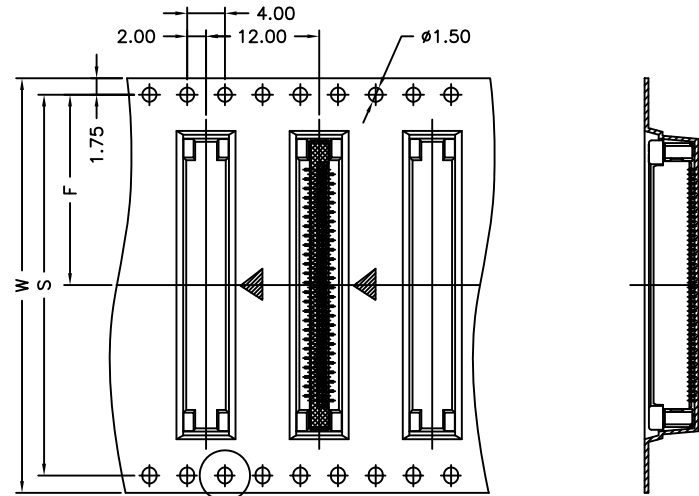
04~21 Contacts



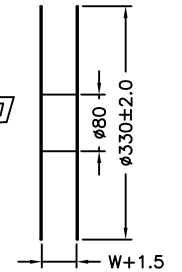
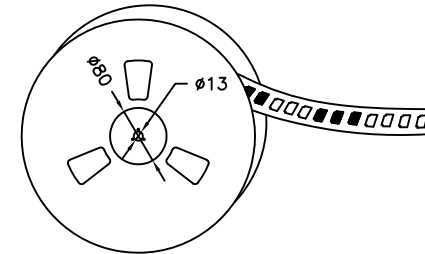
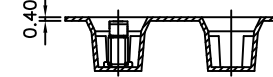
Unreeling direction →



22~51 Contacts



Unreeling direction →



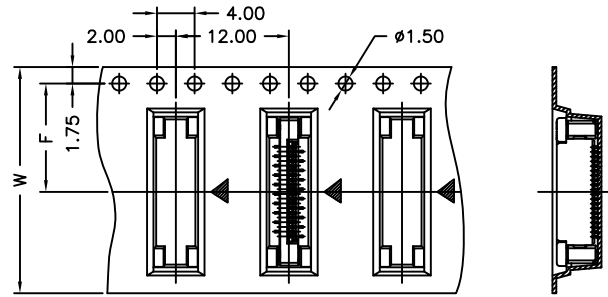
| Number of Contacts | W±0.3 | F±0.1 | S±0.1 | Q'ty/Reel | Number of Contacts | W±0.3 | F±0.1 | S±0.1 | Q'ty/Reel |
|--------------------|-------|-------|-------|-----------|--------------------|-------|-------|-------|-----------|
| 04P | 16 | 7.50 | | 1,000 | 25P | 32 | 14.20 | 28.40 | 1,000 |
| 05P | 24 | 11.50 | | 1,000 | 26P | 32 | 14.20 | 28.40 | 1,000 |
| 06P | 24 | 11.50 | | 1,000 | 27P | 32 | 14.20 | 28.40 | 1,000 |
| 07P | 24 | 11.50 | | 1,000 | 28P | 32 | 14.20 | 28.40 | 1,000 |
| 08P | 24 | 11.50 | | 1,000 | 29P | 32 | 14.20 | 28.40 | 1,000 |
| 09P | 24 | 11.50 | | 1,000 | 30P | 32 | 14.20 | 28.40 | 1,000 |
| 10P | 24 | 11.50 | | 1,000 | 31P | 32 | 14.20 | 28.40 | 1,000 |
| 11P | 24 | 11.50 | | 1,000 | 32P | 32 | 14.20 | 28.40 | 1,000 |
| 12P | 24 | 11.50 | | 1,000 | 33P | 44 | 20.20 | 40.40 | 1,000 |
| 13P | 24 | 11.50 | | 1,000 | 34P | 44 | 20.20 | 40.40 | 1,000 |
| 14P | 24 | 11.50 | | 1,000 | 35P | 44 | 20.20 | 40.40 | 1,000 |
| 15P | 24 | 11.50 | | 1,000 | 36P | 44 | 20.20 | 40.40 | 1,000 |
| 16P | 24 | 11.50 | | 1,000 | 37P | 44 | 20.20 | 40.40 | 1,000 |
| 17P | 24 | 11.50 | | 1,000 | 38P | 44 | 20.20 | 40.40 | 1,000 |
| 18P | 24 | 11.50 | | 1,000 | 39P | 44 | 20.20 | 40.40 | 1,000 |
| 19P | 24 | 11.50 | | 1,000 | 40P | 44 | 20.20 | 40.40 | 1,000 |
| 20P | 24 | 11.50 | | 1,000 | 45P | 44 | 20.20 | 40.40 | 1,000 |
| 21P | 24 | 11.50 | | 1,000 | 49P | 44 | 20.20 | 40.40 | 1,000 |
| 22P | 32 | 14.20 | 28.40 | 1,000 | 50P | 44 | 20.20 | 40.40 | 1,000 |
| 23P | 32 | 14.20 | 28.40 | 1,000 | 51P | 44 | 20.20 | 40.40 | 1,000 |
| 24P | 32 | 14.20 | 28.40 | 1,000 | | | | | |

| REV. | DESCRIPTION | DATE | NAME | GENERAL TOLERANCE |
|------|--------------|------------|------|-------------------|
| A1 | EN1507010002 | 2015.07.02 | 李志深 | X.X±0.25 |
| A0 | NEW RELEASE | 2012.08.01 | 權生新 | X.XX±0.15 |
| | | | | X.XXX±0.05 |

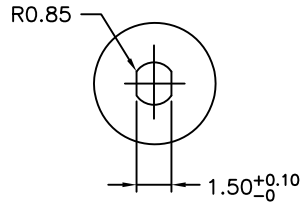
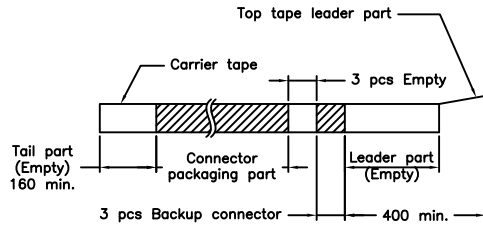
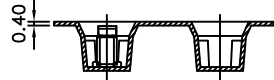
| | | | | |
|---|------------|-----------|--------------------------|---------|
| Singatron Enterprise Co., Ltd. | | | | |
| 0.50mm PITCH FFC/FPC CONNECTOR 180° SMT TYPE, ZIF, TAPING SPEC. | | | | |
| TITLE | | | | |
| DWN | 權生新 | PART NO. | 2FF0500WV-S-XPNXXXXXXXXX | |
| CHKD | 2012.08.01 | SCALE 1:1 | UNIT: mm | ④ |
| APVD | 董正一 | SIZE: A3 | SHEET: 2 OF 3 | REV: A1 |
| CUSTOMER COPY | | | | |



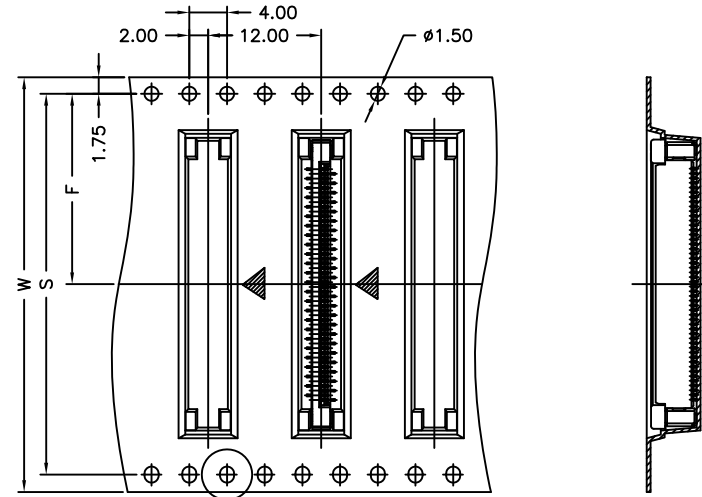
04~21 Contacts



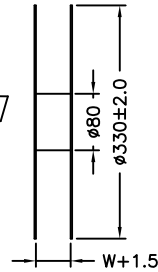
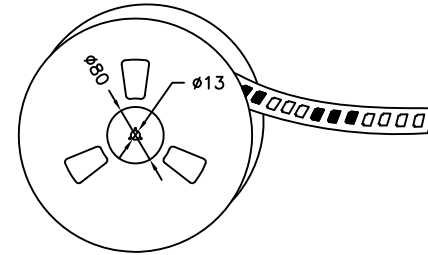
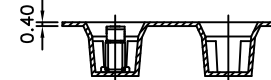
Unreeling direction →



22~51 Contacts



Unreeling direction →



| Number of Contacts | W±0.3 | F±0.1 | S±0.1 | Q'ty/Reel | Number of Contacts | W±0.3 | F±0.1 | S±0.1 | Q'ty/Reel |
|--------------------|-------|-------|-------|-----------|--------------------|-------|-------|-------|-----------|
| 04P | 16 | 7.50 | | 1,000 | 25P | 32 | 14.20 | 28.40 | 1,000 |
| 05P | 24 | 11.50 | | 1,000 | 26P | 32 | 14.20 | 28.40 | 1,000 |
| 06P | 24 | 11.50 | | 1,000 | 27P | 32 | 14.20 | 28.40 | 1,000 |
| 07P | 24 | 11.50 | | 1,000 | 28P | 32 | 14.20 | 28.40 | 1,000 |
| 08P | 24 | 11.50 | | 1,000 | 29P | 32 | 14.20 | 28.40 | 1,000 |
| 09P | 24 | 11.50 | | 1,000 | 30P | 32 | 14.20 | 28.40 | 1,000 |
| 10P | 24 | 11.50 | | 1,000 | 31P | 32 | 14.20 | 28.40 | 1,000 |
| 11P | 24 | 11.50 | | 1,000 | 32P | 32 | 14.20 | 28.40 | 1,000 |
| 12P | 24 | 11.50 | | 1,000 | 33P | 44 | 20.20 | 40.40 | 1,000 |
| 13P | 24 | 11.50 | | 1,000 | 34P | 44 | 20.20 | 40.40 | 1,000 |
| 14P | 24 | 11.50 | | 1,000 | 35P | 44 | 20.20 | 40.40 | 1,000 |
| 15P | 24 | 11.50 | | 1,000 | 36P | 44 | 20.20 | 40.40 | 1,000 |
| 16P | 24 | 11.50 | | 1,000 | 37P | 44 | 20.20 | 40.40 | 1,000 |
| 17P | 24 | 11.50 | | 1,000 | 38P | 44 | 20.20 | 40.40 | 1,000 |
| 18P | 24 | 11.50 | | 1,000 | 39P | 44 | 20.20 | 40.40 | 1,000 |
| 19P | 24 | 11.50 | | 1,000 | 40P | 44 | 20.20 | 40.40 | 1,000 |
| 20P | 24 | 11.50 | | 1,000 | 45P | 44 | 20.20 | 40.40 | 1,000 |
| 21P | 24 | 11.50 | | 1,000 | 49P | 44 | 20.20 | 40.40 | 1,000 |
| 22P | 32 | 14.20 | 28.40 | 1,000 | 50P | 44 | 20.20 | 40.40 | 1,000 |
| 23P | 32 | 14.20 | 28.40 | 1,000 | 51P | 44 | 20.20 | 40.40 | 1,000 |
| 24P | 32 | 14.20 | 28.40 | 1,000 | | | | | |

| REV. | DESCRIPTION | DATE | NAME | GENERAL TOLERANCE |
|------|--------------|------------|------|-------------------|
| A1 | EN1507010002 | 2015.07.02 | 李志深 | X.X±0.25 |
| A0 | NEW RELEASE | 2012.08.01 | 權生新 | X.XX±0.15 |
| | | | | X.XXX±0.05 |

| | | | |
|---|------------|-----------|-------------------------|
| Singatron Enterprise Co., Ltd. | | | |
| 0.50mm PITCH FFC/FPC CONNECTOR 180° SMT TYPE, ZIP, TAPING SPEC. | | | |
| TITLE | | | |
| DWN | 權生新 | PART NO. | 2FF0500WV-S-XPNXXXXXXXX |
| CHKD | 2012.08.01 | SCALE 1:1 | UNIT: mm |
| APVD | 董正一 | SIZE: A3 | SHEET: 3 OF 3 REV: A1 |
| CUSTOMER COPY | | | |