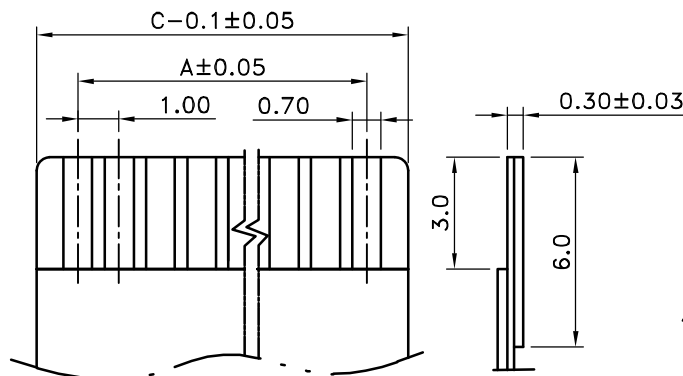
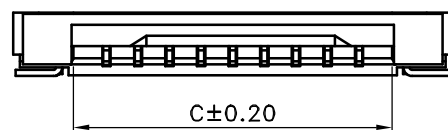
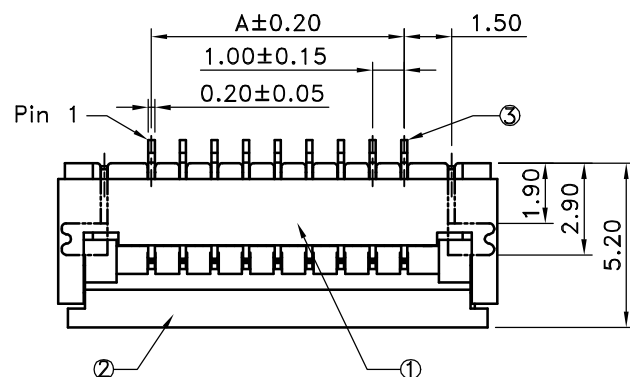
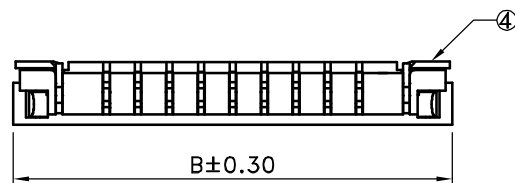
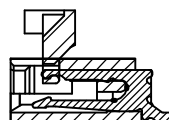


Recommended PCB Layout  
General Tolerance  $\pm 0.05$



Recommended FPC/FFC Dimension



Section A-A

### SPECIFICATIONS

- Current Rating : 0.5A AC/DC
- Withstanding Voltage : 200V AC/minute
- Insulation Resistance : 500M  $\Omega$  min.
- Temperature Range : - 25°C to + 85°C
- Contact Resistance : 30m  $\Omega$  max.

### FFC/FPC

- Part No.: 2FF1157PSDR1-XX (X)/X  
① ② ③

① Poles : 04~30

△ ② Plated : Blank : Pure Tin

G : Gold Flash

△ ③ Packing : Blank : Reel & Tape

/A : Tube

- Material : 1.Base : Thermoplastic high temp.UL94V-0, Color : Natural
- 2.Latch : Thermoplastic high temp.UL94V-0, Color : Black
- 3.Contact : Copper Alloy
- 4.Solder Nail : Copper Alloy

2FF

Poles	Dimension(mm)			Poles	Dimension(mm)		
	A	B	C		A	B	C
04	3.00	8.90	5.10	18	17.00	22.90	19.10
05	4.00	9.90	6.10	19	18.00	23.90	20.10
06	5.00	10.90	7.10	20	19.00	24.90	21.10
07	6.00	11.90	8.10	21	20.00	25.90	22.10
08	7.00	12.90	9.10	22	21.00	26.90	23.10
09	8.00	13.90	10.10	23	22.00	27.90	24.10
10	9.00	14.90	11.10	24	23.00	28.90	25.10
11	10.00	15.90	12.10	25	24.00	29.90	26.10
12	11.00	16.90	13.10	26	25.00	30.90	27.10
13	12.00	17.90	14.10	27	26.00	31.90	28.10
14	13.00	18.90	15.10	28	27.00	32.90	29.10
15	14.00	19.90	16.10	29	28.00	33.90	30.10
16	15.00	20.90	17.10	30	29.00	34.90	31.10
17	16.00	21.90	18.10				

TOLERANCE	LTR	REVISION RECORD	NAME	DATE
.0	$\pm 0.30$	△ 1 新增電鍍及包裝選項	Tom Lee	2017/07/25
.00	$\pm 0.20$	△ 2		
.000	$\pm 0.10$	△ 3		
ANGLE		△ 4		
0°	$\pm 1°$	△ 5		
.0°	$\pm$	△ 6		
SHEET	1/1	△ 7		

Singatron Enterprise Co., Ltd.

TITLE	1.00mm ZIF FPC Connector Piano Type(H=2.0)			
DWN	Tom Lee	PART NO.	2FF1157PSDR1-XX(X)/X	
CHKD	Erin Chou	SCALE	1:1	UNIT: mm
APVD	Tom Shih	SIZE: A3	SHEET: 1 OF 1	REV: a1
CUSTOMER COPY				