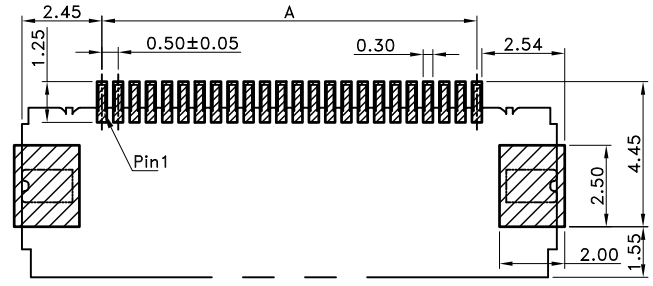
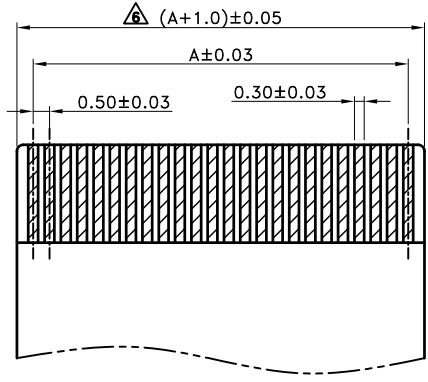


1 2 3 4 5 6 7 8

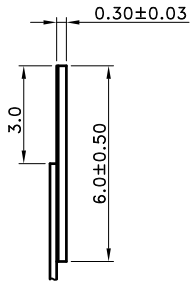
F
E
D
C
B
A



Recommend PCB Layout

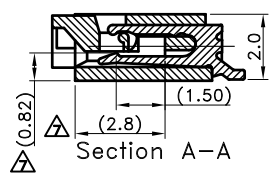
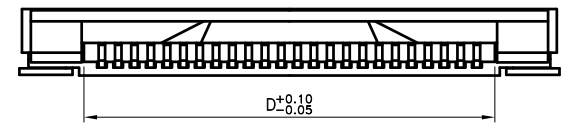
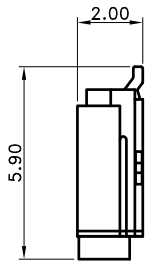
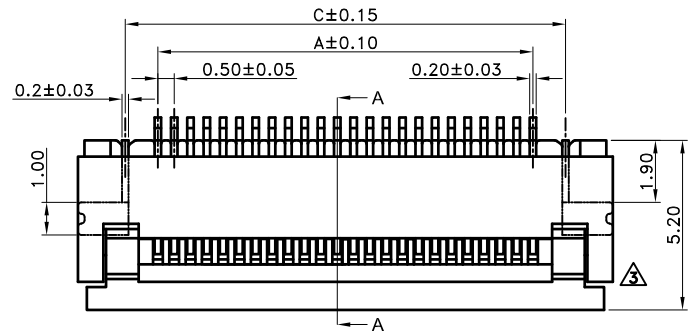
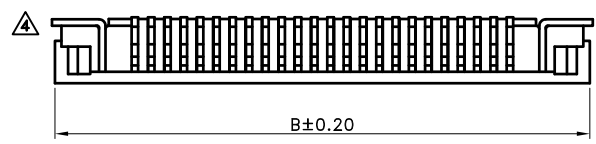


RECOMMENDED FPC/FFC DIM.



- SPECIFICATIONS**
- Current Rating : 0.5A AC/DC
 - Voltage Rating : 50V AC/DC
 - Withstanding Voltage : 200V AC/minute
 - Insulation Resistance : 500MΩ min.
 - Temperature Range : - 25°C to + 85°C
 - Contact Resistance : 20mΩ max.

- FPC/FFC CONNECTOR**
- Part No. : 2FF1191DR1-XX(X)XX XX
① ② ③ ④
 - ① Poles : 04-60
 - ② Contact Plated :
Blank : Matte-Tin Plated
G : Gold Plated
 - ③ Base Material: Blank : LCP UL94V-0
NH : LCP UL94V-0 Halogen Free
 - ④ Packing: Blank : Tape&Reel
/A : Tube
 - Material :
1. Contact : Phosphor Bronze
2. Nail : Phosphor Bronze, Matte-Tin Plated
3. Housing : Refer The Above Options
4. Cover : Refer The Above Options



Poles	Dim A	Dim B	Dim C	Dim D	Poles	Dim A	Dim B	Dim C	Dim D
04	1.50	6.40	3.50	2.60	33	16.00	20.90	18.00	17.10
05	2.00	6.90	4.00	3.10	34	16.50	21.40	18.50	17.60
06	2.50	7.40	4.50	3.60	35	17.00	21.90	19.00	18.10
07	3.00	7.90	5.00	4.10	36	17.50	22.40	19.50	18.60
08	3.50	8.40	5.50	4.60	37	18.00	22.90	20.00	19.10
09	4.00	8.90	6.00	5.10	38	18.50	23.40	20.50	19.60
10	4.50	9.40	6.50	5.60	39	19.00	23.90	21.00	20.10
11	5.00	9.90	7.00	6.10	40	19.50	24.40	21.50	20.60
12	5.50	10.40	7.50	6.60	41	20.00	24.90	22.00	21.10
13	6.00	10.90	8.00	7.10	42	20.50	25.40	22.50	21.60
14	6.50	11.40	8.50	7.60	43	21.00	25.90	23.00	22.10
15	7.00	11.90	9.00	8.10	44	21.50	26.40	23.50	22.60
16	7.50	12.40	9.50	8.60	45	22.00	26.90	24.00	23.10
17	8.00	12.90	10.00	9.10	46	22.50	27.40	24.50	23.60
18	8.50	13.40	10.50	9.60	47	23.00	27.90	25.00	24.10
19	9.00	13.90	11.00	10.10	48	23.50	28.40	25.50	24.60
20	9.50	14.40	11.50	10.60	49	24.00	28.90	26.00	25.10
21	10.00	14.90	12.00	11.10	50	24.50	29.40	26.50	25.60
22	10.50	15.40	12.50	11.60	51	25.00	29.90	27.00	26.10
23	11.00	15.90	13.00	12.10	52	25.50	30.40	27.50	26.60
24	11.50	16.40	13.50	12.60	53	26.00	30.90	28.00	27.10
25	12.00	16.90	14.00	13.10	54	26.50	31.40	28.50	27.60
26	12.50	17.40	14.50	13.60	55	27.00	31.90	29.00	28.10
27	13.00	17.90	15.00	14.10	56	27.50	32.40	29.50	28.60
28	13.50	18.40	15.50	14.60	57	28.00	32.90	30.00	29.10
29	14.00	18.90	16.00	15.10	58	28.50	33.40	30.50	29.60
30	14.50	19.40	16.50	15.60	59	29.00	33.90	31.00	30.10
31	15.00	19.90	17.00	16.10	60	29.50	34.40	31.50	30.60
32	15.50	20.40	17.50	16.60					

TOLERANCE	LTR	REVISION RECORD	NAME	DATE	LTR	REVISION RECORD	NAME	DATE
.0	±0.30	塑料材質由原先PA 46變更為LCP	黃科源	2007/01/29	增加NH選項	吳弘文	2014/10/08	
.00	±0.20	增加54P, 60P尺寸產品	黃科源	2007/09/27	Pin 1 位置標示於PCB layout	吳弘文	2014/11/19	
.000	±0.10	Housing與Cover干涉部分修正	王誠賢	2011/03/07	修正Nail 材質	吳弘文	2015/03/19	
ANGLE		標示Pin 1 位置	張逸維	2012/12/25	CUSTOMER Conforms to The RoHS Instruction			
0°	±1°	修改額定電壓、電流、鍍層選項	張逸維	2013/04/08				
.0°	±	修正RECOMMENDED FPC/FFC DIM.	吳弘文	2014/03/03				
SHEET	1/1	增加接觸點相對尺寸	吳弘文	2014/08/19				

Singatron Enterprise Co., Ltd.

TITLE	0.50mm SMT Series FPC/FFC Connector			
DWN	吳弘文	PART NO.	2FF1191DR1-XX(X)XX XX	
CHKD	周慈雲	SCALE	1:1	UNIT: mm
APVD	張育瑞	SIZE	A3	SHEET: 1 OF 1 REV: a10
CUSTOMER COPY				

1 2 3 4 5 6 7 8 文件編號 RD-06-043-A