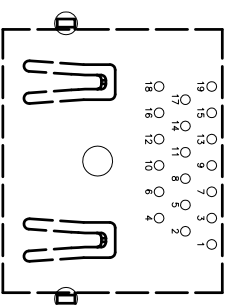
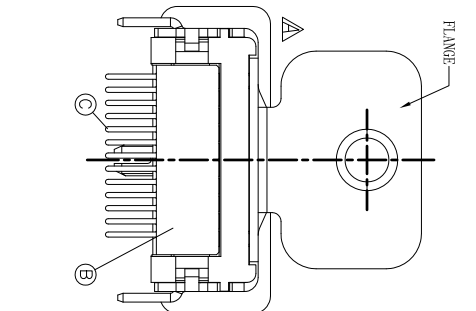
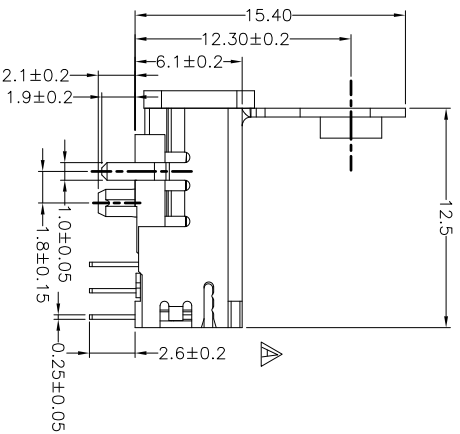
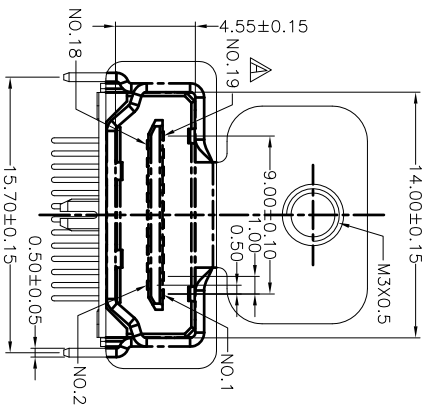
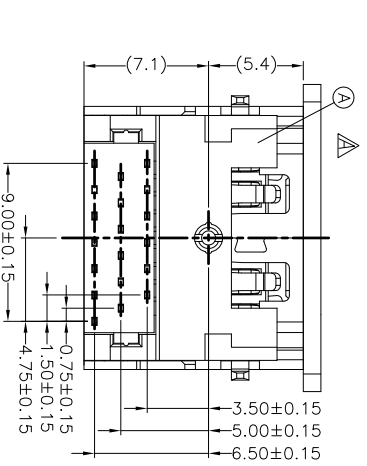


SPECIFICATIONS:

1. ELECTRICAL CHARACTERISTICS:
 - 1-1. CURRENT RATING: 0.5 AMP.
 - 1-2. VOLTAGE RATING: 40V.
 - 1-3. CONTACT RESISTANCE: 30mΩ MAX.
 - 1-4. INSULATION RESISTANCE: 100MΩ MIN. @ 500V DC.
 - 1-5. DIELECTRIC WITHSTANDING VOLTAGE: 500V AC FOR 1 MINUTE.
2. MECHANICAL CHARACTERISTICS:
 - 2-1. INSERTION FORCE: 4.5Kgf MAX.
 - 2-2. WITHDRAWAL FORCE: 1.0~4.0Kgf.
3. LIFE TEST: 10,000 CYCLES.
4. OTHER GENERAL SPEC. TO REFER "HDMI SERIES SPEC".
5. TO CONFORM TO THE SINGATRON HAZARDOUS SUBSTANCE FREE SPEC.
6. GREEN PRODUCT IDENTIFICATION LABEL ON PACKING: **G.P. PASS**
7. PACKAGE : SEE "2HE-5119-001 " PACKAGE.
8. PACKAGE: TAPE & REEL
9. FOR REFLOW SOLDERING LEAD-FREE PROCESS.

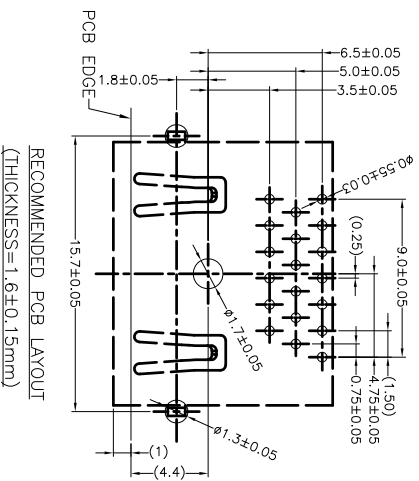


PIN ASSIGNMENT



PART NO.
2HE-5119-001

SHELL CONSTRUCTION
O: WITH FLANGE AND SPRING LATCH
SHELL TAIL IS THROUGH HOLE TYPE.



NO	DESCRIPTION	QTY	MATERIAL	PLATING & COLOR
E	CAP	1	HIGH TEMP.THERMOPLASTIC UL 94V-0	BLACK COLOR
D	SHELL	1	BRASS 0.5t	NICKEL PLATING GOLD PLATING 30μ ON MATING AREA TIN PLATING ON SOLDER TAILS.
C	CONTACT	19	BRASS 0.25t	ALL OVER NICKEL PLATING.
B	COVER	1	HIGH TEMP.THERMOPLASTIC UL 94V-0	BLACK COLOR
A	HOUSING	1	HIGH TEMP.THERMOPLASTIC UL 94V-0	BLACK COLOR

UNLESS OTHERWISE SPECIFIED TOLERANCES
DECIMALS: ANGLES:
X : ±0.5 X : ±2°
X.X : ±0.3 X.X : ±1°
X.XX : ±0.2

Singatron Enterprise Co., Ltd.
信晉企業股份有限公司

HDMI RECEPTACLE THROUGH HOLE 19 PIN

PART NO. 2HE-5119-001
SCALE: 4/1 UNIT: mm

SIZE: A3 SHEET: 1 OF 1 REV: A

CUSTOMER COPY