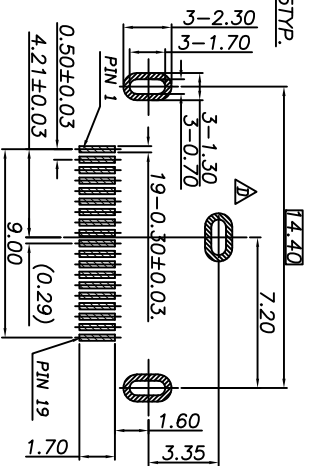
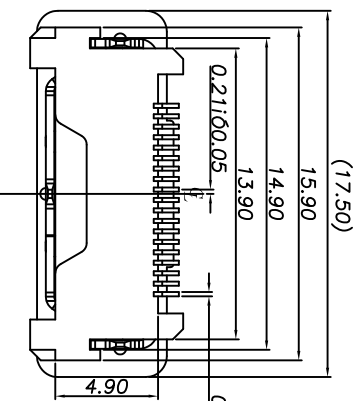
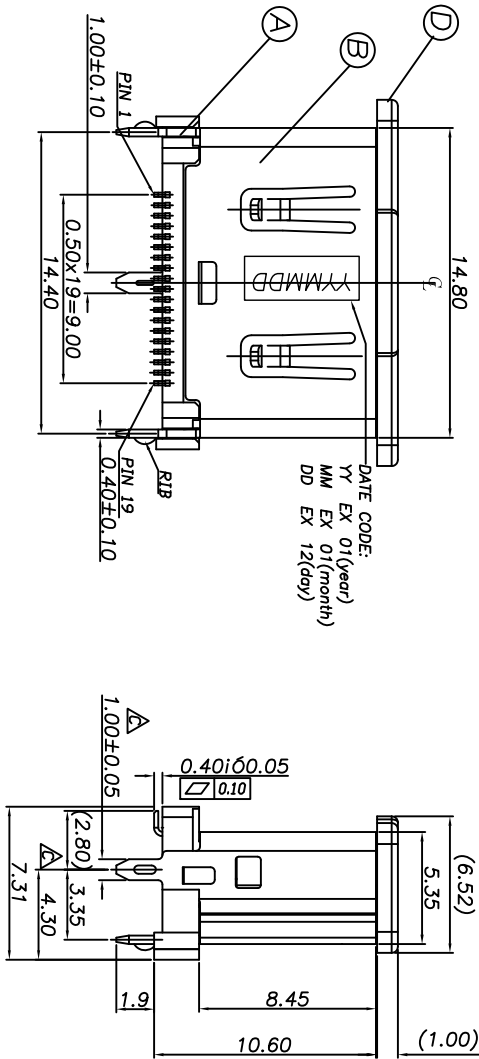


DATE CODE:  
YY EX 01(year)  
MM EX 01(month)  
DD EX 12(day)



RECOMMENDED PCB LAYOUT THICKNESS = 1.6 mm  
TOLERANCE = ±0.05  
(TOP VIEW)

SPECIFICATIONS:

1. OTHER GENERAL SPEC. TO REFER "HDMI SERIES SPEC."
2. TO CONFORM TO THE SINGATRON HAZARDOUS SUBSTANCE FREE SPEC.
3. HALOGEN FREE PRODUCT IDENTIFICATION LABEL ON PACKAGING:
4. PACKAGE: SEE "2HE1549 SERIES" PACKAGE.
5. FOR REFLOW SOLDERING LEAD-FREE PROCESS.

2HE1549-000111

- PACKAGE
- 1: TAPE & REEL
- HOUSING COLOR
- 1: BLACK
- CONTACT PLATING
- 1: GOLD FLASH OVERALL

REV.	ECN NO.	OR DESCRIPTION	REVISED	DATE
A	PDR RELEASE	NY-C	2010.01.25	
B	ECN NO.:1100018	NY-C	2010.04.16	
C	ECN NO.:1110001	NY-C	2011.02.10	
D	ECN NO.:1120009	NY-C	2012.03.06	

NO.	DESCRIPTION	QTY	MATERIAL	PLATING & COLOR
D	COVER	1	LCP, UL 94V-0	BLACK
C	CONTACT	19	COPPER ALLOY	GOLD FLASH
B	SHELL	1	COPPER ALLOY	NICKEL PLATED
A	HOUSING	1	LCP, UL 94V-0	BLACK

UNLESS OTHERWISE SPECIFIED TOLERANCES

DECIMALS:	ANGLES:
X : ±0.5	X : ±2°
X.X : ±0.3	X.X : ±1°
X.XX : ±0.2	

Singatron Enterprise Co., Ltd.  
信亨企業股份有限公司

TITLE	HDMI FEMALE 19P, VERTICAL & SMT TYPE W/ RIB
DWN	HW-C-2012.03.06
CHKD	HW-C-2012.03.06
APVD	HW-C-2012.03.06

PART NO. 2HE1549-000111  
SCALE 1:1  
UNIT: mm  
SHEET: 1 OF 1  
REV: D