

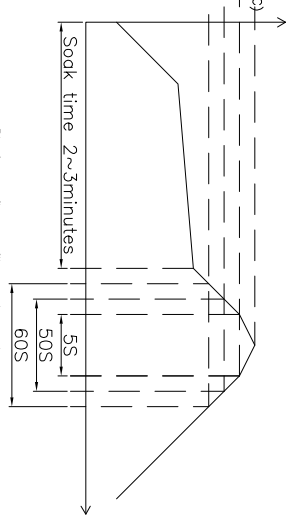
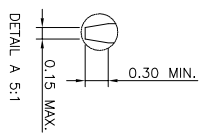
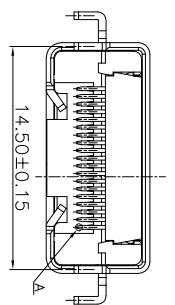
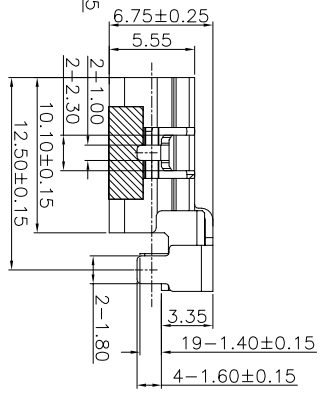
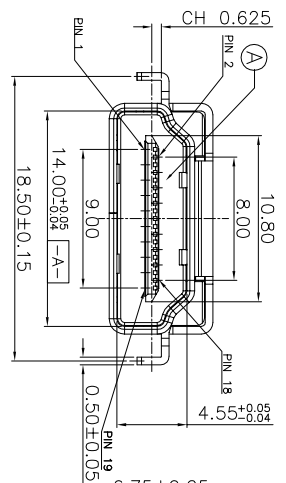
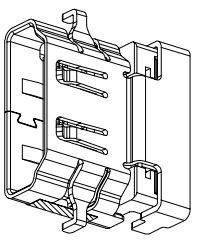
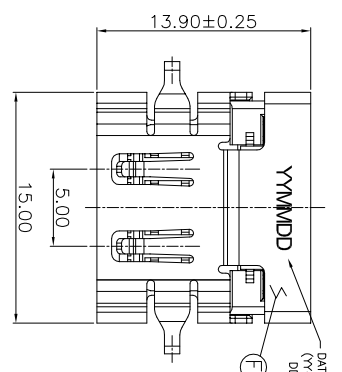
REV.	ECN NO OR DESCRIPTION	REVISED	DATE
A	PDR RELEASE	Even	2019.04.09

PART NO.  
**2HE1619-006111F**

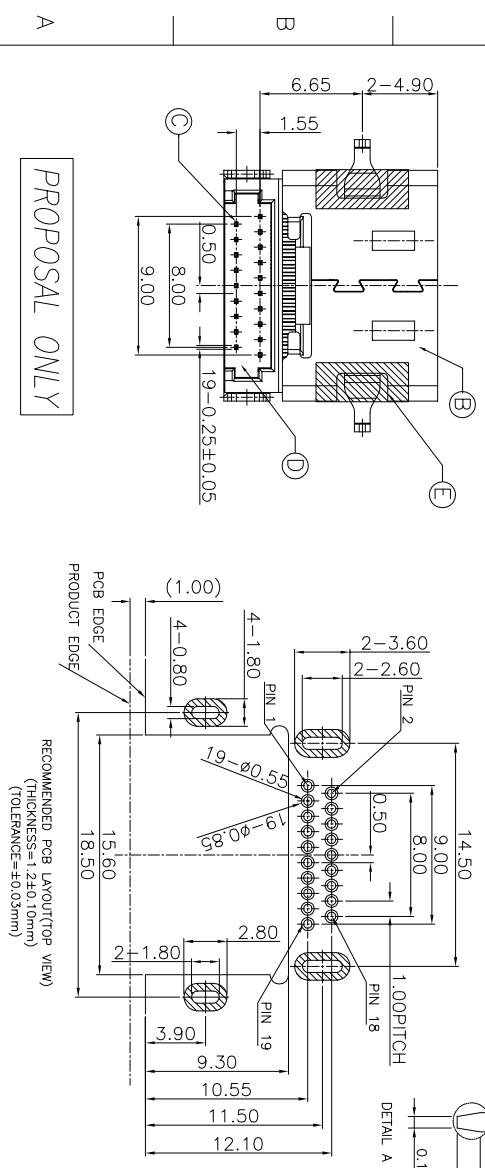
**SPECIFICATIONS:**

- 1. ELECTRICAL CHARACTERISTICS:**
- 1-1. CURRENT RATING: 0.5 AMP.
  - 1-2. VOLTAGE RATING: 40V.
  - 1-3. CONTACT RESISTANCE: 30mΩ MAX.
  - 1-4. INSULATION RESISTANCE: 100MΩ MIN. @ 500V DC.
  - 1-5. DIELECTRIC WITHSTANDING VOLTAGE: 500V AC FOR 1 MINUTE.
- 2. MECHANICAL CHARACTERISTICS:**
- 2-1. INSERTION FORCE: 4.5kgf MAX.
  - 2-2. WITHDRAWAL FORCE: 1.0~4.0kgf.
- 3. LIFE TEST: 10,000 CYCLES.**
- 4. OTHER GENERAL SPEC. TO REFER "HDMI SERIES SPEC."**
- 5. TO CONFORM TO THE SINGATRON HAZARDOUS SUBSTANCE FREE SPEC.**
- 6. HALOGEN FREE PRODUCT IDENTIFICATION LABEL ON PACKAGING:**
- 7. PACKAGE: SEE "2HE1619-006111F" PACKAGE.**
- 8. FOR REFLOW SOLDERING LEAD-FREE PROCESS.**

- SUFFIX: HALOGEN FREE
- PACKAGE
- 1: TAPE AND REEL
  - HOUSING COLOR
  - 1: BLACK
- CONTACT PLATING
- 1: GOLD FLASH OVER ALL
  - GOLD FLASH OVER SOLDER AREA



Pb-free reflow profile requirements:



PROPOSAL ONLY

NO	DESCRIPTION	QTY	MATERIAL	PLATING & COLOR
F	TOP COVER	1	LCP UL 94V-0	BLACK
E	MYLAR	2		YELLOW
D	COVER	1	LCP UL 94V-0	BLACK
C	CONTACT	19	C2680	SEE PART NO.
B	SHELL	1	SUS304	NICKEL
A	HOUSING	1	LCP UL 94V-0	BLACK

UNLESS OTHERWISE SPECIFIED TOLERANCES

DECIMALS: ANGLES:

X : ±0.5 X : ±2°

X.X : ±0.3 X.X : ±1'

X.XX : ±0.2

Singatron Enterprise Co., Ltd.  
信亨企業股份有限公司

TITLE: HDMI A TYPE FEMALE, REVERSE, SINKING, CH=0.625mm

DWN: ENH 2019.04.09

CHKD: SCALE 1:1 UNIT: mm

APVD: ANGE 2019.04.09 SIZE: A3 SHEET: 1 OF 1

PART NO. **2HE1619-006111F**

CUSTOMER COPY