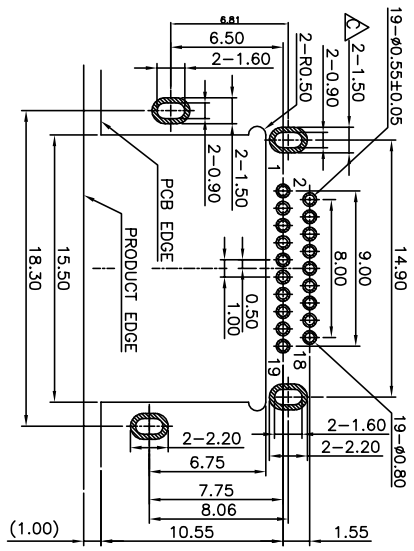
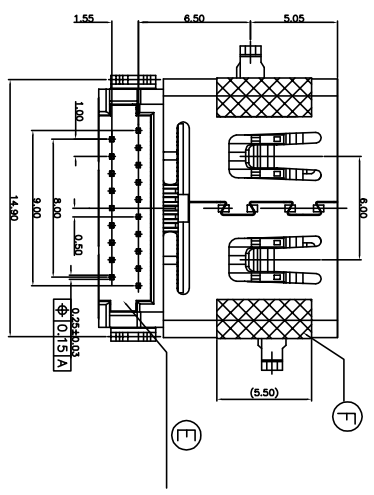
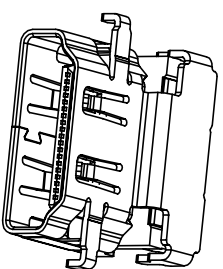
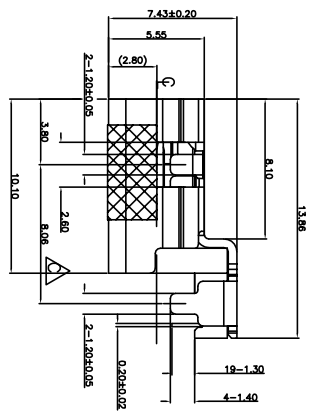
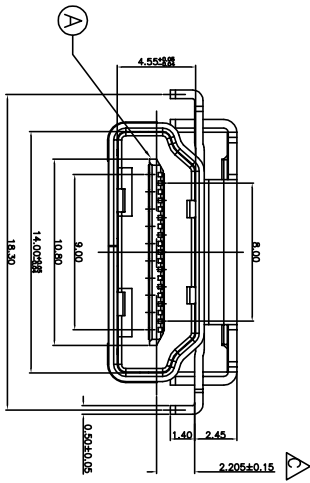
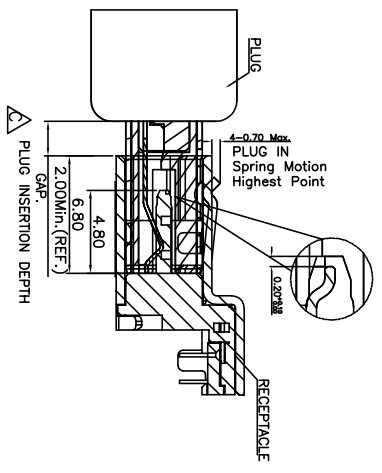
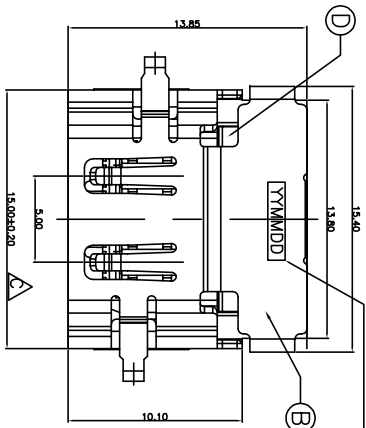


DATE CORO: YYMMDD
(YY=YEAR; MM=MONTH; DD=DAY)



SPECIFICATIONS:

1. ELECTRICAL CHARACTERISTICS:
 - 1-1. CURRENT RATING: 0.5 AMP.
 - 1-2. VOLTAGE RATING: 40V.
 - 1-3. CONTACT RESISTANCE: 30mΩ MAX.
 - 1-4. INSULATION RESISTANCE: 100MΩ MIN. @ 500V DC.
 - 1-5. DIELECTRIC WITHSTANDING VOLTAGE: 500V AC FOR 1 MINUTE.
2. MECHANICAL CHARACTERISTICS:
 - 2-1. INSERTION FORCE: 4.5kgf MAX.
 - 2-2. WITHDRAWAL FORCE: 1.0~4.0kgf.
3. LIFE TEST: 10,000 CYCLES.
4. OTHER GENERAL SPEC. TO REFER "HDMI SERIES SPEC".
5. TO CONFORM TO THE SINGATRON HAZARDOUS SUBSTANCE FREE SPEC.
6. HALOGEN FREE PRODUCT IDENTIFICATION LABEL ON PACKAGING.
7. PACKAGE: SEE "2HE1624-010111F" PACKAGE.
8. FOR REFLOW SOLDERING LEAD-FREE PROCESS.

PART NO.

2HE1624-010111F

CH: _____
1: 2.21mm

- SUFFIX: HALOGEN FREE
- PACKAGE
- 1: TAPE AND REEL
- HOUSING COLOR
- 1: BLACK
- CONTACT PLATING
- 1: GOLD FLASH ON CONTACT AREA, MATTE TIN ON SOLDER AREA, NICKEL UNDERPLATED OVERALL

REV.	ECN NO OR DESCRIPTION	REVISED	DATE
A	PDR RELEASE	NY-C	2013.10.11
B	ECN NO:1.40025	NY-C	2014.02.24
C	ECN NO:1.80011	EVEN	2018.04.12

RECOMMENDED PCB LAYOUT(TOP VIEW)
(DEFAULT DIMENSION TOL=±0.05mm)
(THICKNESS=1.2±0.10mm)

NO	DESCRIPTION	QTY	MATERIAL	PLATING & COLOR
G	INK	2	KAPTON FILM	BLACK
F	MYLAR	2	KAPTON FILM	BLACK
E	BOTTOM COVER	1	HIGH TEMP. THERMOPLASTIC UL 94V-0	BLACK
D	TOP COVER	1	HIGH TEMP. THERMOPLASTIC UL 94V-0	BLACK
C	CONTACT	19	COPPER ALLOY	SEE PART NO.
B	SHELL	1	COPPER ALLOY	NICKEL
A	HOUSING	1	HIGH TEMP. THERMOPLASTIC UL 94V-0	BLACK

UNLESS OTHERWISE SPECIFIED TOLERANCES

Singatron Enterprise Co., Ltd.
信音企業股份有限公司

TITLE: HDMI A TYPE FEMALE, REVERSE, SINKING, CH=2.205mm

DWN: EBN 2018.04.12 PART NO. 2HE1624-010111F

CHKD: _____ SCALE: 1:1 UNIT: mm

APVD: JMC2018.04.12 SIZE: A3 SHEET: 1 OF 1 REV: C

CUSTOMER COPY