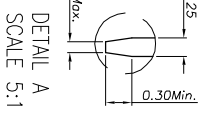
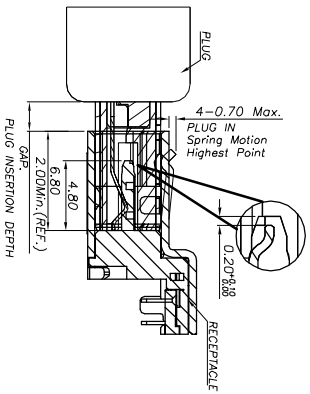
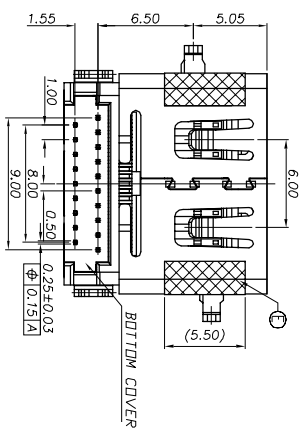
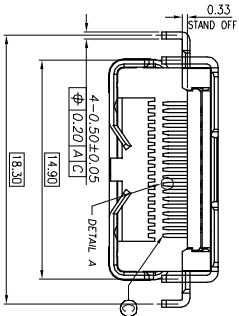
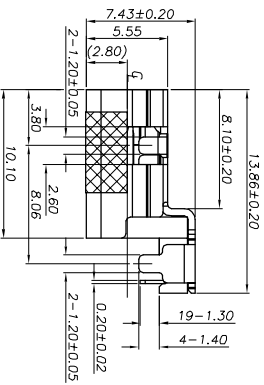
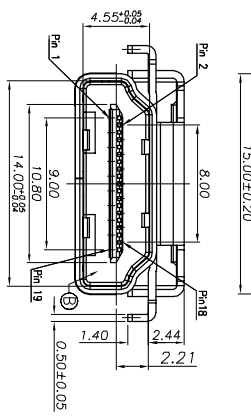
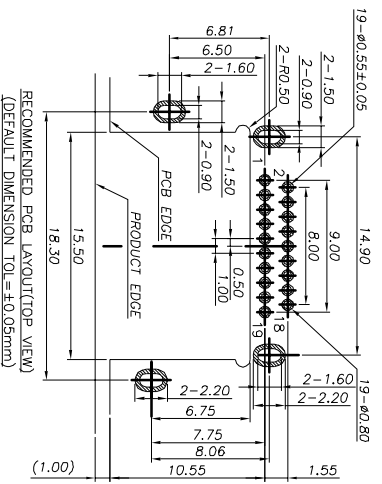


3D VIEW



DETAIL A  
SCALE 5:1



RECOMMENDED PCB LAYOUT(TOP VIEW)  
(DEFAULT DIMENSION TOL=±0.05mm)  
(THICKNESS=1.2±0.10mm)

SPECIFICATIONS:

- ELECTRICAL CHARACTERISTICS:
  - RATING: 40V 0.5A
  - CONTACT RESISTANCE: 30mΩ MAX.(INITIAL)
  - DIELECTRIC WITHSTANDING VOLTAGE: 500V AC FOR ONE MINUTE.
  - INSULATION RESISTANCE: 100MΩ MIN. MEASURED BY 500 VDC
- MECHANICAL CHARACTERISTICS:
  - INSERTION FORCE : 4.5 KGF MAX.
  - WITHDRAWAL FORCE : 0.5~4.0 KGF
- LIFE TEST: 5,000 CYCLES MIN.
- OTHER GENERAL SPEC. TO REFER "HDMI SERIES SPEC".
- TO CONFORM TO SINGATRON HAZARDOUS SUBSTANCE FREE SPEC.
- HALOGEN PRODUCT IDENTIFICATION MARK ON JACK:
- HALOGEN PRODUCT IDENTIFICATION LABEL ON PACKAGING:
- FOR REFLOW SOLDERING LEAD-FREE PROCESS.

PART NO.  
2HE1624-011X11F  
C.H.-2205mm

- SUFFIX: HALOGEN FREE
- PACKAGE
- 1: TAPE AND REEL
- HOUSING COLOR
- 1: BLACK
- CONTACT PLATING
- 1: GOLD FLUSH PLATING ON CONTACT AREA
- 2: 60u Min. MATTE TIN ON SOLDER AREA
- 3: 30u GOLD PLATING ON CONTACT AREA
- 60u Min. MATTE TIN ON SOLDER AREA

|  |             |     |              |                        |
|--|-------------|-----|--------------|------------------------|
| E  | MYALR       | 1   |              | YELLOW                 |
| D  | INK         |     |              |                        |
| C  | TERMINAL    | 19  | C2680-H      | SEE PART NO.           |
| B  | HOUSING     | 1   | LCP UL 94V-0 | BLACK                  |
| A  | SHELL       | 1   | C2680-H      | NICKEL PLATED 600u"MIN |
| NO   | DESCRIPTION | QTY | MATERIAL     | PLATING & COLOR        |
| UNLESS OTHERWISE SPECIFIED TOLERANCES        |             |     |              |                        |
| Singatron Enterprise Co., Ltd.<br>信亨企業股份有限公司 |             |     |              |                        |
| TITLE HDMI A TYPE FEMALE REVERSE C.H=2.21mm  |             |     |              |                        |
| DWN Qizhen PART NO. 2HE1624-011X11F          |             |     |              |                        |
| CHKD X.XX :±0.3 X.X :±1°                     |             |     |              |                        |
| APVD X.XX :±0.2                              |             |     |              |                        |
| CUSTOMER COPY                                |             |     |              |                        |

| REV | ECN NO OR DESCRIPTION | REVISED | DATE       |
|-----|-----------------------|---------|------------|
| A   | PDR NO:1180423-2A/2B  | Qizhen  | 2018.09.13 |