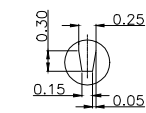
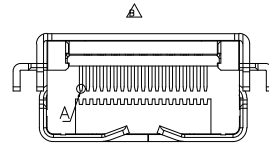
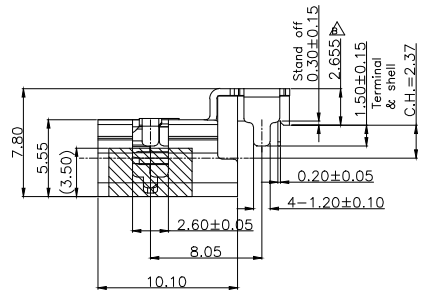
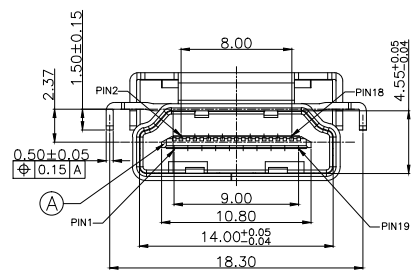


SPECIFICATIONS:

- ELECTRICAL CHARACTERISTICS:
 - CURRENT RATING: 0.5 AMP.
 - VOLTAGE RATING: 40V.
 - CONTACT RESISTANCE: 30mΩ MAX.
 - INSULATION RESISTANCE: 100MΩ MIN. @ 500V DC.
 - DIELECTRIC WITHSTANDING VOLTAGE: 500V AC FOR 1 MINUTE.
- MECHANICAL CHARACTERISTICS:
 - INSERTION FORCE: 4.5Kgf MAX.
 - WITHDRAWAL FORCE: 1.0~4.0Kgf.
- LIFE TEST: 10,000 CYCLES.
- OTHER GENERAL SPEC. TO REFER "HDMI SERIES SPEC".
- TO CONFORM TO THE SINGATRON HAZARDOUS SUBSTANCE FREE SPEC.
- HALOGEN FREE PRODUCT IDENTIFICATION LABEL ON PACKAGING:
- PACKAGE: SEE "2HE1655 SERIES" PACKAGE.
- FOR REFLOW SOLDERING LEAD-FREE PROCESS.

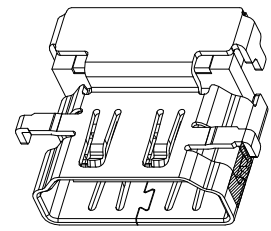
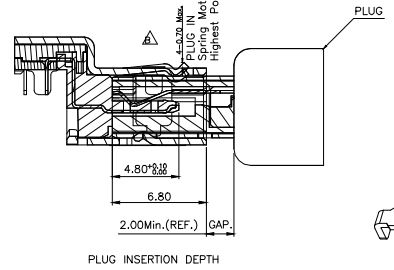
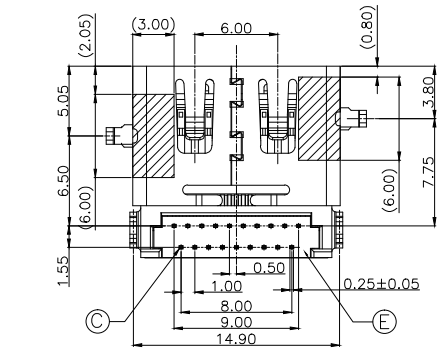
REV.	ECN NO OR DESCRIPTION	REVISED	DATE
A	PDR RELEASE	IVY-C	2014.03.26
B	ECN NO: L202109-C09	EVEN	2022.01.12



PART NO.
2HE1655-001111F

MYLAR
1: Both side mylar

SUFFIX: HALOGEN FREE
PACKAGE
1: TAPE AND REEL
HOUSING COLOR
1: BLACK
CONTACT PLATING
1: GOLD FLASH ON CONTACT AREA,
GOLD FLASH ON SOLDER AREA.
50u" MIN. NICKEL UNDERPLATE OVER ALL.



3D VIEW

F	MYLAR	2	KAPTON FILM	YELLOW
E	BOTTOM COVER	1	LCP+30%GF 94V-0(E130I)	BLACK
D	TOP COVER	1	LCP+30%GF 94V-0(E130I)	BLACK
C	CONTACT	19	C2680R-H T=0.2	SEE PART NO.
B	SHELL	1	SUS304-1/4H T=0.5	NICKEL 50u" MIN.
A	HOUSING	1	LCP+30%GF 94V-0(E130I)	BLACK
NO	DESCRIPTION	QTY	MATERIAL	PLATING & COLOR

UNLESS OTHERWISE SPECIFIED TOLERANCES		信音科技(香港)有限公司		
DECIMALS:	ANGLES:	TITLE	HDMI A TYPE FEMALE, REVERSE, SINKING, C.H.=2.37mm	
X :±0.5	X :±2'	DWN	EVEN 2022.01.12	PART NO. 2HE1655-001111F
X.X :±0.3	X.X :±1'	CHKD	SCALE 3.3:1	UNIT: mm
X.XX :±0.2		APVD	ANGELA2022.01.12	SIZE: A3 SHEET: 1 OF 1 REV: B
CUSTOMER COPY				