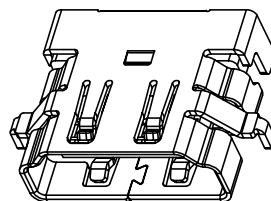
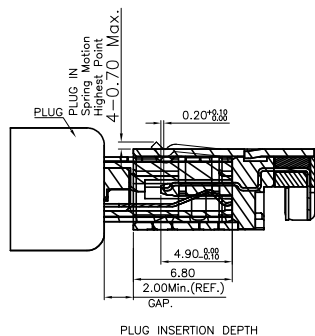
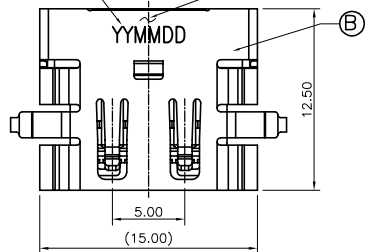


REV.	ECN NO OR DESCRIPTION	REVISED	DATE
A	PDR RELEASE	IVY-C	2016.08.05

DATE CODE: YYMMDD  
 YY: YEAR  
 MM: MONTH  
 DD: DAY



3D VIEW

SPECIFICATIONS:

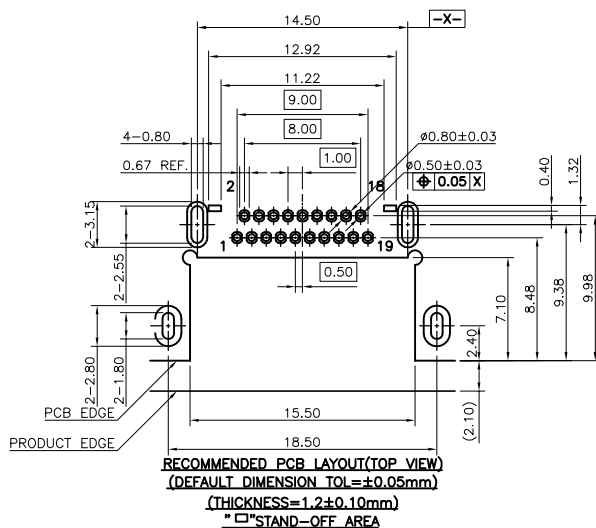
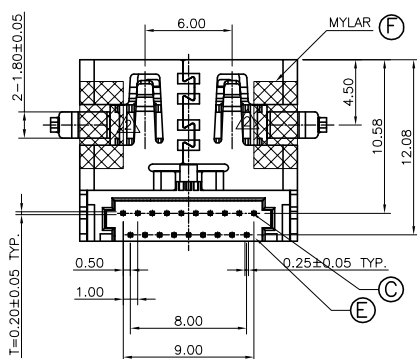
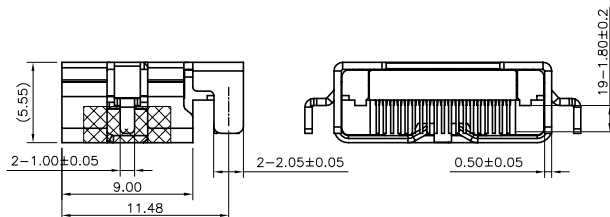
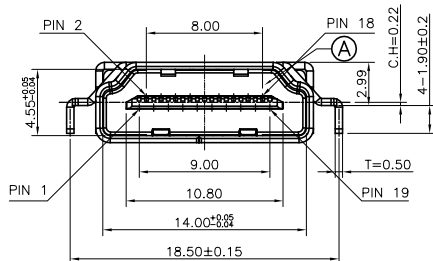
- ELECTRICAL CHARACTERISTICS:
  - CURRENT RATING: 0.5 AMP.
  - VOLTAGE RATING: 40V.
  - INITIAL CONTACT RESISTANCE EXCLUDING CONDUCTOR RESISTANCE: 10mΩ MAX. (TARGET DESIGN VALUE). AFTER TEST: Δ 30mΩ MAX.
  - INSULATION RESISTANCE: 100MΩ MIN. @ 500V DC.
  - DIELECTRIC WITHSTANDING VOLTAGE: 500V AC FOR 1 MINUTE.
- MECHANICAL CHARACTERISTICS:
  - INSERTION FORCE: 4.5Kgf MAX.
  - WITHDRAWAL FORCE: 1.0~4.0Kgf.
- LIFE TEST: 10,000 CYCLES.
- OTHER GENERAL SPEC. TO REFER "HDMI SERIES SPEC".
- TO CONFORM TO THE SINGATRON HAZARDOUS SUBSTANCE FREE SPEC.
- HALOGEN FREE PRODUCT IDENTIFICATION LABEL ON PACKAGING:
- PACKAGE: SEE "2HE1657-020111F" PACKAGE.
- FOR REFLOW SOLDERING LEAD-FREE PROCESS.



PART NO.

2HE1657-020111F

- SUFFIX: HALOGEN FREE
- PACKAGE: 1: TAPE & REEL
- HOUSING COLOR: 1: BLACK
- CONTACT PLATING: 1: GOLD FLASH ON CONTACT AREA, MATTE TIN ON SOLDER AREA.



RECOMMENDED PCB LAYOUT (TOP VIEW)  
 (DEFAULT DIMENSION TOL = ±0.05mm)  
 (THICKNESS = 1.2 ± 0.10mm)  
 \* □ STAND-OFF AREA

F	MYLAR	2	POLYIMIDE FILM	YELLOW
E	BOTTOM COVER	1	LCP UL 94V-0	BLACK
D	TOP COVER	1	LCP UL 94V-0	BLACK
C	CONTACT	19	COPPER ALLOY	SEE PART NO.
B	SHELL	1	STAINLESS STEEL	NICKEL
A	HOUSING	1	LCP UL 94V-0	BLACK
NO	DESCRIPTION	QTY	MATERIAL	PLATING & COLOR
UNLESS OTHERWISE SPECIFIED TOLERANCES			Singatron Enterprise Co., Ltd. 	
DECIMALS:	ANGLES:	TITLE	HDMI A TYPE FEMALE, REVERSE, DIP, C.H=0.22mm	
X : ±0.5	X : ±2°	DWN	IVY-C 2016.08.05	PART NO. 2HE1657-020111F
X.X : ±0.3	X.X : ±1°	CHKD	ANGELA2016.08.05	SCALE 3.3:1 UNIT: mm
X.XX : ±0.2		APVD	ANGELA2016.08.05	SIZE: A3 SHEET: 1 OF 1 REV: A
CUSTOMER COPY				