

| REV. | ECN NO OR DESCRIPTION | REVISED | DATE       |
|------|-----------------------|---------|------------|
| A    | PDR RELEASE           | IVY-C   | 2013.02.27 |
| B    | ECN NO: L140155       | IVY-C   | 2014.11.26 |
| C    | ECN NO: L180006       | EVEN    | 2018.03.19 |

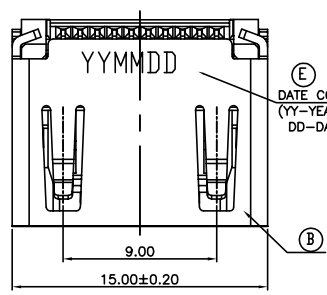
**SPECIFICATIONS:**

- ELECTRICAL CHARACTERISTICS:**
  - CURRENT RATING: 0.5 AMP.
  - VOLTAGE RATING: 40V.
  - CONTACT RESISTANCE: 30mΩ MAX.
  - INSULATION RESISTANCE: 100MΩ MIN. @ 500V DC.
  - DIELECTRIC WITHSTANDING VOLTAGE: 500V AC FOR 1 MINUTE.
- MECHANICAL CHARACTERISTICS:**
  - INSERTION FORCE: 4.5Kgf MAX.
  - WITHDRAWAL FORCE: 1.0~4.0Kgf.
- LIFE TEST: 10,000 CYCLES.**
- OTHER GENERAL SPEC. TO REFER "HDMI SERIES SPEC".**
- TO CONFORM TO THE SINGATRON HAZARDOUS SUBSTANCE FREE SPEC.**
- HALOGEN FREE PRODUCT IDENTIFICATION LABEL ON PACKAGING:**
- PACKAGE: SEE "2HE1673 SERIES" PACKAGE.**
- FOR REFLOW SOLDERING LEAD-FREE PROCESS.**

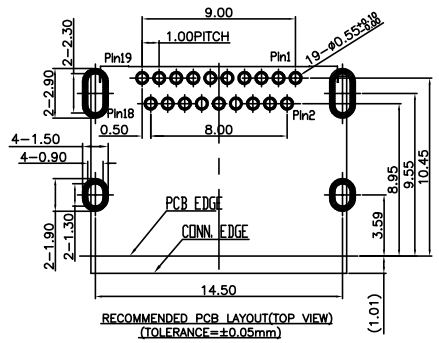
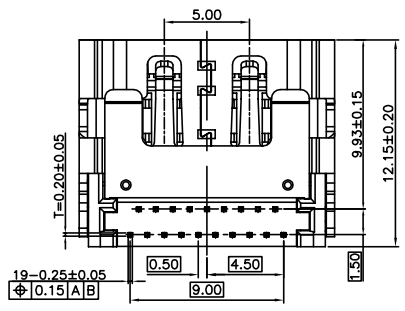
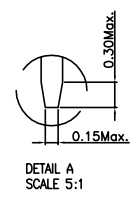
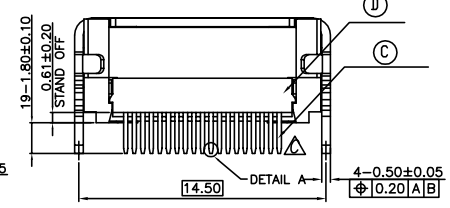
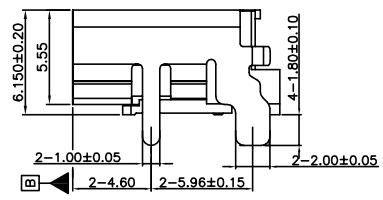
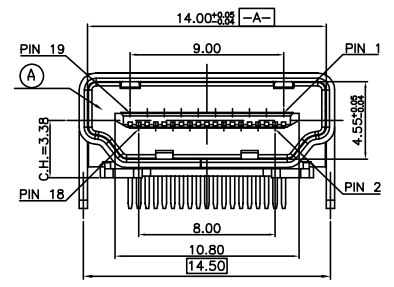
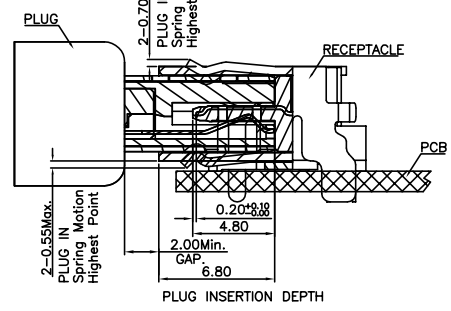
**PART NO.**

**2HE1673-000111F**

- SUFFIX: HALOGEN FREE
- PACKAGE: 1: TAPE AND REEL
- HOUSING COLOR: 1: BLACK
- CONTACT PLATING: 1: GOLD FLASH ON CONTACT AREA, MATTE TIN ON SOLDER AREA, NICKEL UNDERPLATED OVERALL.

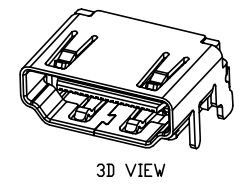


DATE CODE:YY MM DD  
(YY-YEAR MM-MONTH DD-DAY)



HDMI TYPE A PIN ASSIGNMENT

| PIN | Signal Assignment          |
|-----|----------------------------|
| 1   | TMDS Data2+                |
| 2   | TMDS Data2 Shield          |
| 3   | TMDS Data2-                |
| 4   | TMDS Data1+                |
| 5   | TMDS Data1 Shield          |
| 6   | TMDS Data1-                |
| 7   | TMDS Data0+                |
| 8   | TMDS Data0 Shield          |
| 9   | TMDS Data0-                |
| 10  | TMDS Clock+                |
| 11  | TMDS Clock Shield          |
| 12  | TMDS Clock-                |
| 13  | CEC                        |
| 14  | Utility/HEAC+              |
| 15  | SCL                        |
| 16  | SDA                        |
| 17  | DDC/CEC Ground/HEAC Shield |
| 18  | +5V Power                  |
| 19  | Hot Plug Detect/HEAC-      |



| E                                     | INK            |   |                                   | BLACK           |
|---------------------------------------|----------------|---|-----------------------------------|-----------------|
| D                                     | COVER          | 1   | HIGH TEMP. THERMOPLASTIC UL 94V-0 | BLACK           |
| C                                     | CONTACT        | 19  | COPPER ALLOY                      | SEE PART NO.    |
| B                                     | SHELL          | 1   | STAINLESS STEEL                   | NICKEL          |
| A                                     | HOUSING        | 1   | HIGH TEMP. THERMOPLASTIC UL 94V-0 | BLACK           |
| NO                                    | DESCRIPTION    | QTY   | MATERIAL                          | PLATING & COLOR |
| UNLESS OTHERWISE SPECIFIED TOLERANCES |                | Singatron Enterprise Co., Ltd.<br>信音企業股份有限公司            |                                   |                 |
| DECIMALS: ANGLES:                     |                | TITLE HDMI A TYPE FEMALE, SINKING, DIP TYPE, C.H=3.38mm |                                   |                 |
| X                                     | :±0.5 X :±2°   | DWN EVEN 2018.03.19 PART NO. 2HE1673-000111F            |                                   |                 |
| X.X                                   | :±0.3 X.X :±1° | CHKD ANGELA 2018.03.19 SCALE 4:1 UNIT: mm               |                                   |                 |
| X.XX                                  | :±0.2          | APVD ANGELA 2018.03.19 SIZE: A3 SHEET:1 OF 1 REV: C     |                                   |                 |
| <b>CUSTOMER COPY</b>                  |                |   |                                   |                 |