


REV.	ECN NO OR DESCRIPTION	REVISED	DATE
A	PDR RELEASE	EVEN	2020.07.07
B	ECN NO: L202010-C01	EVEN	2020.11.25
C	ECN NO: L202309-C07	EVEN	2023.11.21

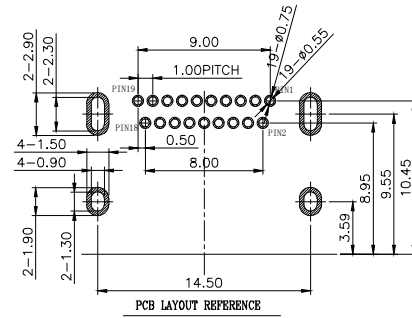
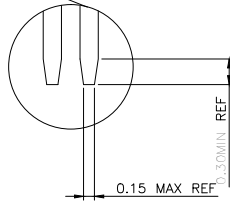
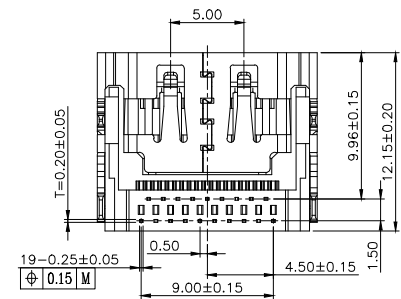
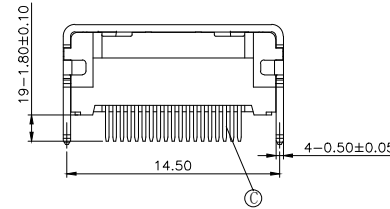
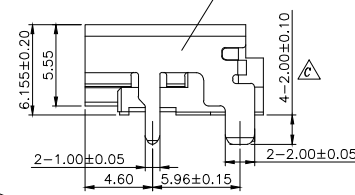
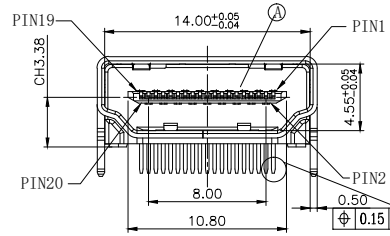
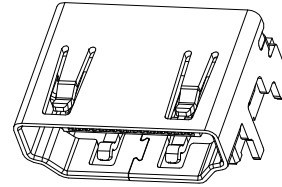
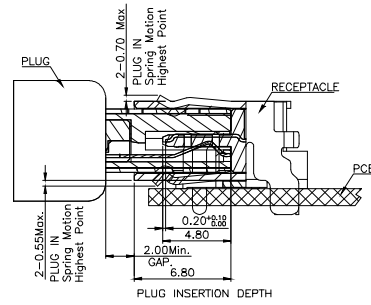
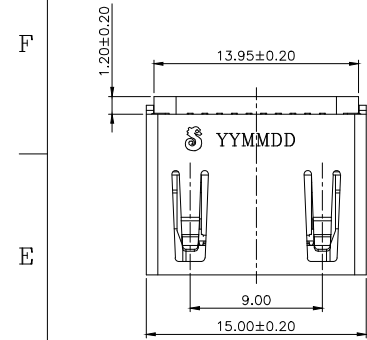
SPECIFICATIONS:

- ELECTRICAL CHARACTERISTICS:
 - CURRENT RATING: 0.5 AMP.
 - VOLTAGE RATING: 40V.
 - INITIAL CONTACT RESISTANCE EXCLUDING CONDUCTOR RESISTANCE: 10mΩ MAX (TARGET DESIGN VALUE). AFTER TEST: Δ30mΩ MAX.
 - INSULATION RESISTANCE: 100MΩ MIN. @ 500V DC.
 - DIELECTRIC WITHSTANDING VOLTAGE: 500V AC FOR 1 MINUTE.
- MECHANICAL CHARACTERISTICS:
 - INSERTION FORCE: 4.5Kgf MAX.
 - WITHDRAWAL FORCE: 1.0~4.0Kgf.
- LIFE TEST: 10,000 CYCLES.
- OTHER GENERAL SPEC. TO REFER "HDMI SERIES SPEC".
- TO CONFORM TO THE SINGATRON HAZARDOUS SUBSTANCE FREE SPEC.
- HALOGEN FREE PRODUCT IDENTIFICATION LABEL ON PACKAGING: 
- PACKAGE: SEE "2HE1673-022X11F" PACKAGE.
- FOR REFLOW SOLDERING LEAD-FREE PROCESS.

PART NO.
2HE1673-022X11F

- SUFFIX: HALOGEN FREE
- PACKAGE: 1: TAPE AND REEL
- HOUSING COLOR: 1: BLACK
- CONTACT PLATING:
 - GOLD FLASH(1u") ON CONTACT AREA, 100u" MIN. MATTE TIN ON SOLDER AREA, 50u" MIN. NICKEL UNDERPLATED OVERALL.
 - 30u" GOLD ON CONTACT AREA, 100u" MIN. MATTE TIN ON SOLDER AREA, 50u" MIN. NICKEL UNDERPLATED OVERALL.

C	CONTACT	19	C2680-EH	SEE PART NO.
B	SHELL	1	SUS201	50u" MIN. NICKEL
A	HOUSING	1	LCP UL 94V-0	BLACK
NO	DESCRIPTION	QTY	MATERIAL	PLATING & COLOR
UNLESS OTHERWISE SPECIFIED TOLERANCES		 信音科技(香港)有限公司		
DECIMALS:		TITLE: HDMI A TYPE FEMALE, SINKING, DIP TYPE, C.H=3.38mm		
ANGLES:		DWN: 2023.11.21 PART NO. 2HE1673-022X11F		
X	:±0.5	X	:±2'	CHKD: SCALE 4:1 UNIT: mm
X.X	:±0.3	X.X	:±1'	APVD: 2023.11.21 SIZE: A3 SHEET: 1 OF 1 REV: C
X.XX	:±0.2	CUSTOMER COPY		



PIN	SIGNAL ASSIGNMENT	PIN	SIGNAL ASSIGNMENT	PIN	SIGNAL ASSIGNMENT
1	TMD5 DATA2+	8	TMD5 DATA0 SHIELD	15	SCL
2	TMD5 DATA2 SHIELD	9	TMD5 DATA0-	16	SDA
3	TMD5 DATA2-	10	TMD5 CLOCK+	17	EDC/CDC GROUND
4	TMD5 DATA1+	11	TMD5 CLOCK + SHIELD	18	+5V POWER
5	TMD5 DATA1 SHIELD	12	TMD5 CLOCK-	19	HOT PLUG DETECT
6	TMD5 DATA1-	13	CDC		
7	TMD5 DATA0+	14	UPLP/PV/HRAC+		