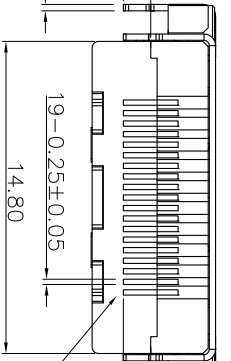
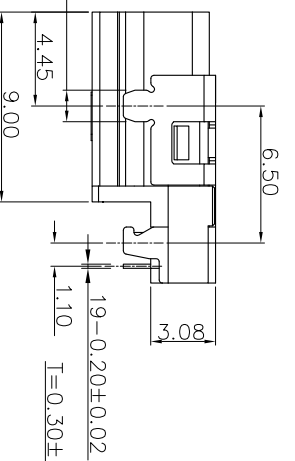
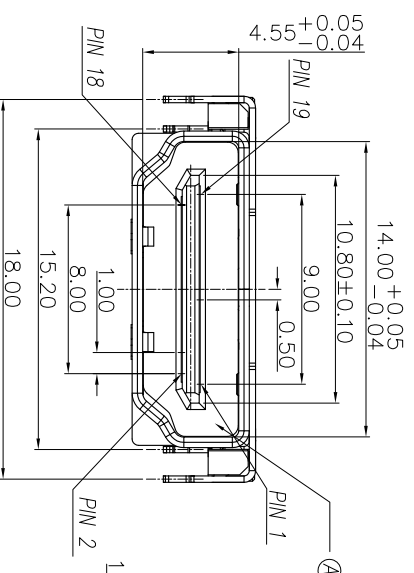
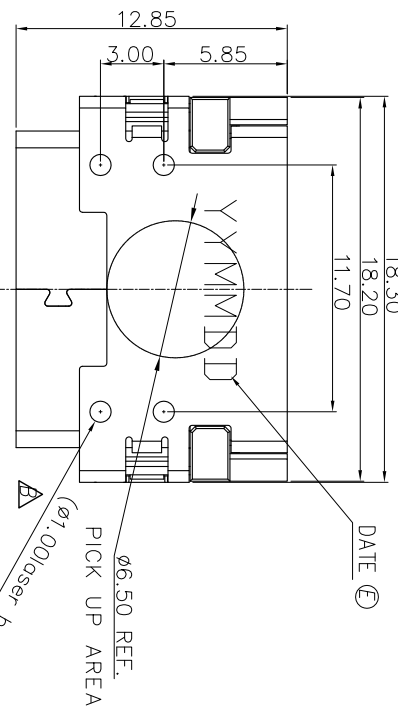


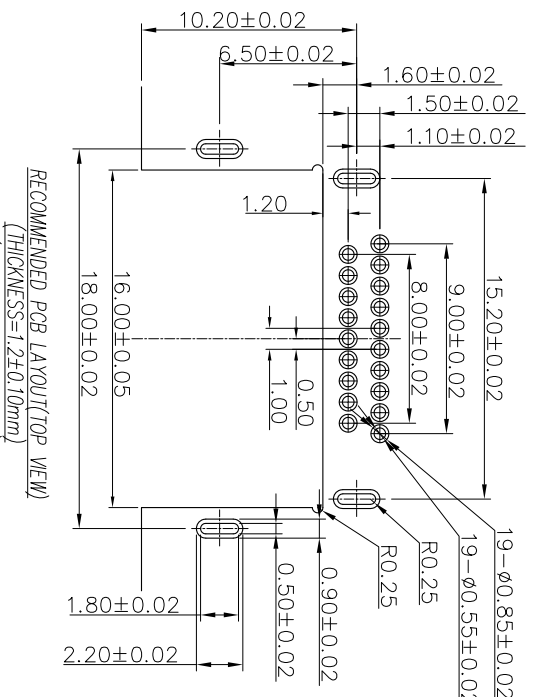
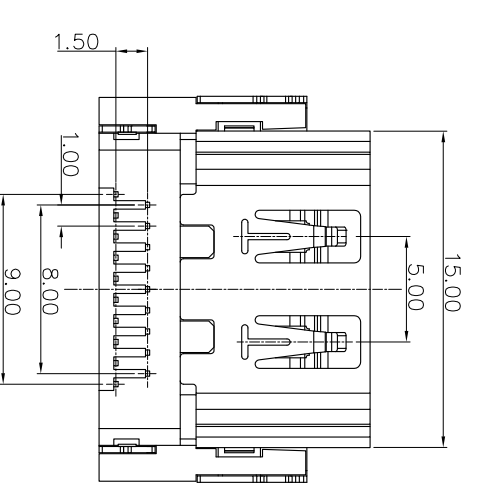
REV.	ECN NO OR DESCRIPTION	REVISED	DATE
A	PDR RELEASE	IV-C	2013.08.02
B	ECN NO: L130145	IV-C	2013.12.12

SPECIFICATIONS:

- ELECTRICAL CHARACTERISTICS:
 - CURRENT RATING: 0.5 AMP.
 - VOLTAGE RATING: 40V
 - CONTACT RESISTANCE: 30mΩ MAX.
 - INSULATION RESISTANCE: 100MΩ MIN. AT 500V DC.
 - DIELECTRIC WITHSTANDING VOLTAGE: 500V AC FOR 1 MIN/UTE.
- MECHANICAL CHARACTERISTICS:
 - INSERTION FORCE: 4.5Kgf MAX.
 - WITHDRAWAL FORCE: 1.0~4.0Kgf.
- LIFE TEST: 10,000 CYCLES.
- OTHER GENERAL SPEC. TO REFER "HDMI SERIES SPEC".
- TO CONFORM TO THE SINGATRON HAZARDOUS SUBSTANCE FREE SPEC.
- HALOGEN FREE PRODUCT IDENTIFICATION LABEL ON PACKAGING:
- FOR REFLOW SOLDERING LEAD-FREE PROCESS.
- PACKAGE: SEE "ZHE1702 SERIES" PACKAGE.



SUFFIX: HALOGEN FREE
 PACKAGE
 1: TAPE AND REEL
 HOUSING COLOR
 1: BLACK
 CONTACT PLATING
 1: 5U" GOLD ON CONTACT AREA,
 100u" MATTE TIN ON SOLDER AREA.
 50u" MIN. NICKEL UNDER-PLATED



RECOMMENDED PCB LAYOUT (TOP VIEW)
 (THICKNESS=1.2±0.10mm)
 (TOLERANCE=±0.05mm)

NO	DESCRIPTION	QTY	MATERIAL	PLATING & COLOR
E	INK	1	BLACK	BLACK
D	SHELL COVER	1	STAINLESS	NICKEL
C	CONTACT	19	COPPER ALLOY	SEE PART NO.
B	SHELL	1	SS0C	NICKEL
A	HOUSING	1	HIGH TEMP. THERMOPLASTIC UL 94V-0	BLACK

Singatron Enterprise Co., Ltd.
 信亨企業股份有限公司

TITLE	HDMI A TYPE FEMALE, SINKING
DWN	HW-C-20131212
CHKD	SCALE 4:1
APVD	HW-C-20131212

PART NO. ZHE1702-000111F

CUSTOMER COPY