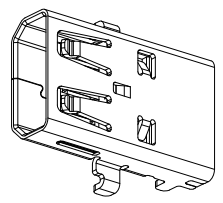
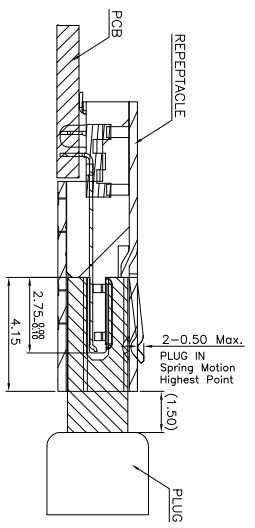
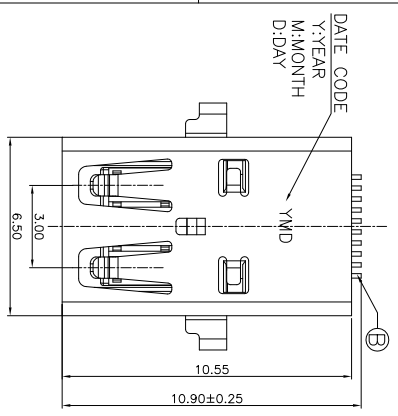
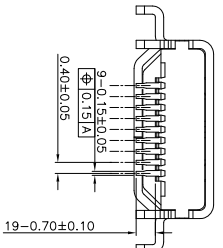
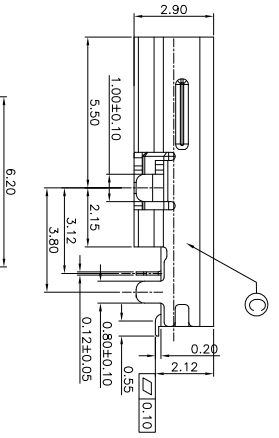
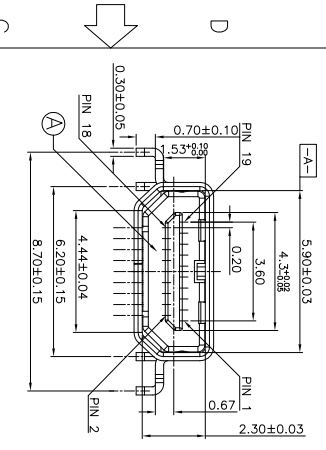


REV.	ECN NO OR DESCRIPTION	REVISED	DATE
A	PDR RELEASE	EVEN	2021.02.22

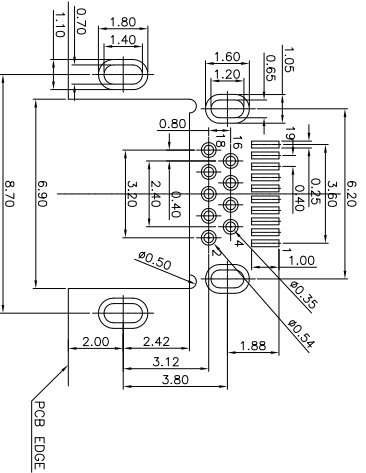
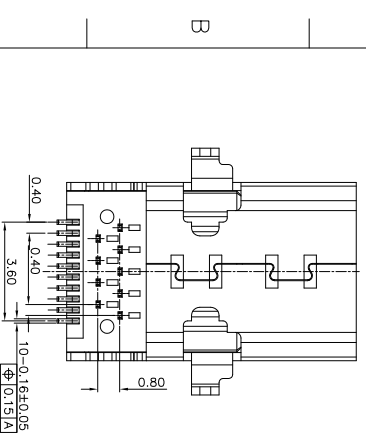


- SPECIFICATIONS:
- ELECTRICAL CHARACTERISTICS:
 - CURRENT RATING: 0.3 AMP.
 - VOLTAGE RATING: 40V.
 - INITIAL CONTACT RESISTANCE EXCLUDING CONDUCTOR RESISTANCE: 10mΩ MAX (TARGET DESIGN VALUE), AFTER TEST: Δ 30mΩ MAX.
 - INSULATION RESISTANCE: 100MΩ MIN. @ 500V DC.
 - DIELECTRIC WITHSTANDING VOLTAGE: 250V AC FOR 1 MINUTE.
 - MECHANICAL CHARACTERISTICS:
 - INSERTION FORCE: 4.5kgf MAX.
 - WITHDRAWAL FORCE: 0.5~2.5kgf.
 - LIFE TEST: 5,000 CYCLES
 - OTHER GENERAL SPEC. TO REFER "HDMI SERIES SPEC."
 - TO CONFORM TO THE SINGATRON HAZARDOUS SUBSTANCE FREE SPEC.
 - HALOGEN FREE PRODUCT IDENTIFICATION LABEL ON PACKAGING.
 - PACKAGE: SEE "ZHE1703-103111F" PACKAGE.
 - FOR REFLOW SOLDERING LEAD-FREE PROCESS.



PART NO.
ZHE1703-103111F
CH=0.67mm

SUFFIX: HALOGEN FREE
PACKAGE
1: TAPE AND REEL
HOUSING COLOR
1: BLACK
CONTACT PLATING
1: GOLD FLASH ON CONTACT AREA AND GOLD FLASH ON SOLDER AREA
50μ" NICKEL UNDER PLATING



RECOMMENDED PCB LAYOUT(TOP VIEW)
THICKNESS=0.8mm
TOLERANCE UNSPECIFIED=±0.05mm)

PIN	Signal Assignment	PIN	Signal Assignment
1	Hot Plug Detect	2	Utility
3	TMDS Data2+	4	TMDS Data2 Shield
5	TMDS Data2-	6	TMDS Data1+
7	TMDS Data0+	8	TMDS Data0 Shield
9	TMDS Data0-	10	TMDS Data0+ Shield
11	TMDS Clock+	12	TMDS Clock-
13	TMDS Clock Shield	14	TMDS Clock+
15	CEC	16	DDC/CEC Ground
17	SCL	18	SDA
19	+5V Power		

C	SHELL	1	SUS 304	50μ" MIN.NICKEL
B	CONTACT	19	C5191	SEE PART NO.
A	HOUSING	1	LCP UL 94V-0	BLACK
	DESCRIPTION	QTY	MATERIAL	PLATING & COLOR
UNLESS OTHERWISE SPECIFIED TOLERANCES				
DECIMALS:		ANGLES:		
X		±0.5		
X.X		±0.3		
X.XX		±0.2		
TITLE				
HDMI D TYPE FEMALE, DIP, CH=0.67				
DWG				
PART NO. ZHE1703-103111F				
CHKD				
SCALE: 5:1				
UNIT: mm				
APVD				
SIZE: A3				
SHEET: 1 OF 1				
REV: A				
CUSTOMER COPY				

信音科技(香港)有限公司