

REV.	ECN NO OR DESCRIPTION	REVISED	DATE
A	PDR RELEASE	IVY-C	2014.04.18
B	ECR NO: L140054	IVY-C	2014.05.22

SPECIFICATIONS:

1. ELECTRICAL CHARACTERISTICS:

- 1-1. CURRENT RATING: 0.5 AMP.
  - 1-2. VOLTAGE RATING: 40V.
  - 1-3. CONTACT RESISTANCE: 30mΩ MAX.
  - 1-4. INSULATION RESISTANCE: 100MΩ MIN. @ 500V DC.
  - 1-5. DIELECTRIC WITHSTANDING VOLTAGE: 500V AC FOR 1 MINUTE.
2. MECHANICAL CHARACTERISTICS:
- 2-1. INSERTION FORCE: 4.5kgf MAX.
  - 2-2. WITHDRAWAL FORCE: 1.0~4.0kgf.
3. LIFE TEST: 10,000 CYCLES.

4. OTHER GENERAL SPEC. TO REFER "2HE1715 SERIES SPEC".

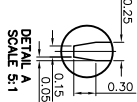
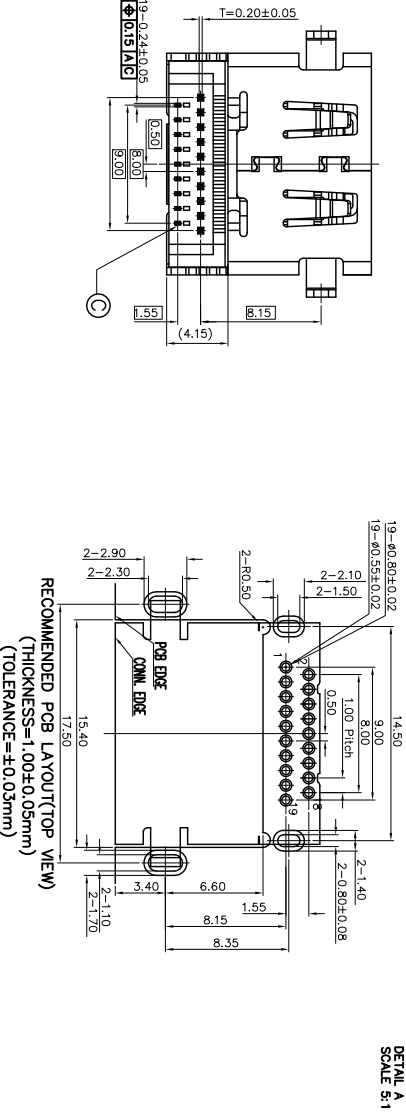
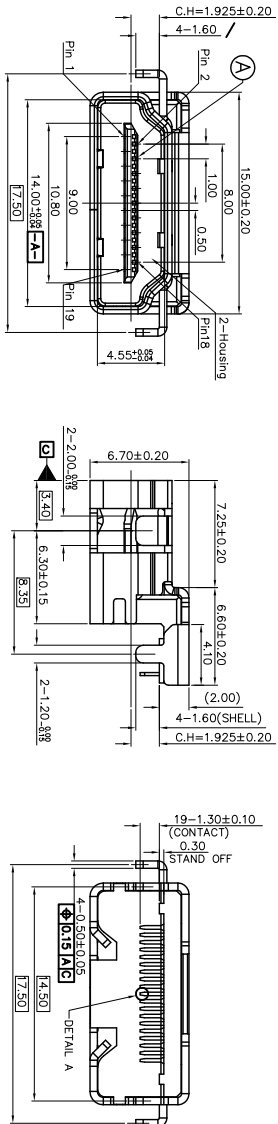
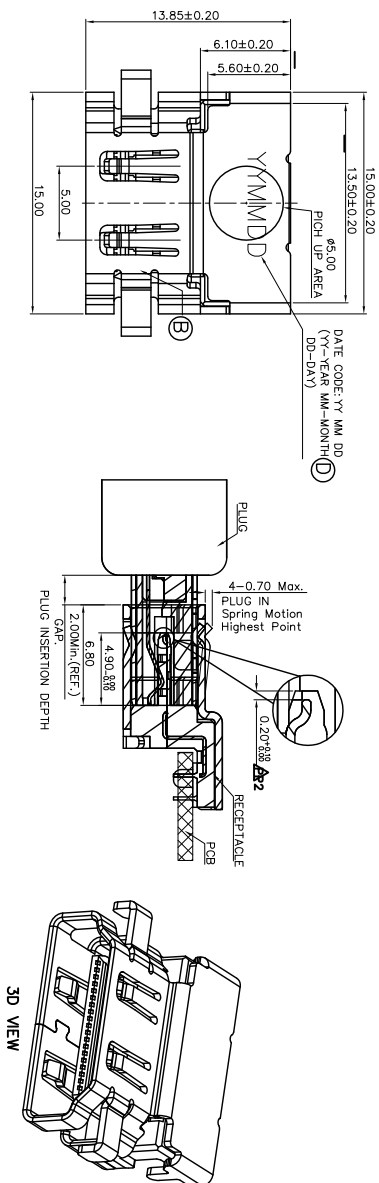
5. TO CONFORM TO THE SINGATRON HAZARDOUS SUBSTANCE FREE SPEC.
6. HALOGEN FREE PRODUCT IDENTIFICATION LABEL ON PACKAGING.
7. PACKAGE: SEE "2HE1715 SERIES" PACKAGE.
8. FOR REFLOW SOLDERING LEAD-FREE PROCESS.

PART NO.

2HE1715-000X11F

SUFFIX: HALOGEN FREE  
PACKAGE  
1: TAPE AND REEL  
HOUSING COLOR  
1: BLACK  
CONTACT PLATING

- 1: GOLD FLASH ON CONTACT AREA
- GOLD FLASH ON SOLDER AREA.
- 2: Au 30u" ON CONTACT AREA
- GOLD FLASH ON SOLDER AREA.
- NICKEL UNDERPLATED OVERALL



D	INK		BLACK COLOR
C	CONTACT	19	COPPER ALLOY
B	SHELL	1	STAINLESS STEEL
A	HOUSING	1	HIGH TEMP. THERMOPLASTIC UL 94V-0
NO	DESCRIPTION	QTY	MATERIAL
			PLATING & COLOR
UNLESS OTHERWISE SPECIFIED TOLERANCES			
DECIMALS: ANGLES:			
X : ±0.5	X : ±2°		
X.X : ±0.3	X.X : ±1°		
X.XX : ±0.2			
TITLE HDMI A TYPE FEMALE, DIP, C/H=1.925mm			
DWN	W-C-2014.05.22	PART NO.	2HE1715-000X11F
CHKD		SCALE	1:1 UNIT: mm
APVD	AMEL2014.05.22	SIZE: A3	SHEET: 1 OF 1
REV: B			
CUSTOMER COPY			

