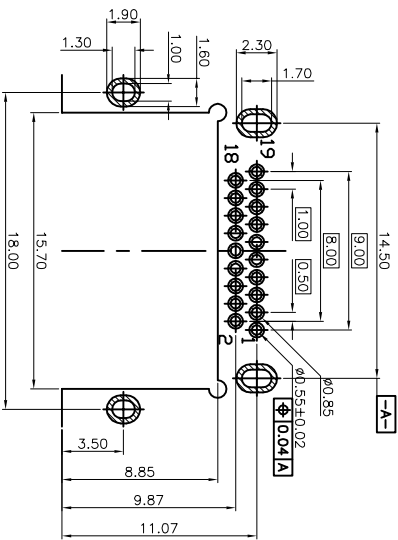
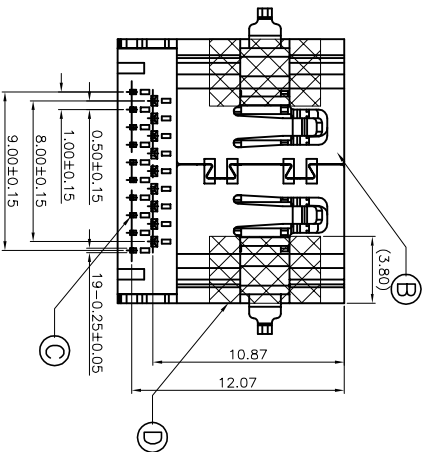
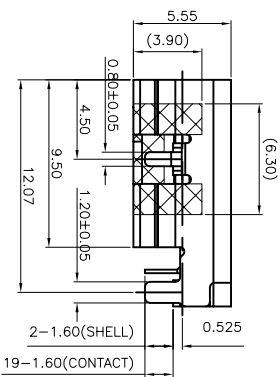
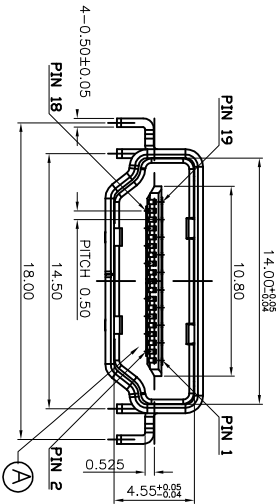


3D VIEW



RECOMMENDED PCB LAYOUT(TOP VIEW)  
 (THICKNESS=1.2±0.10mm)  
 (TOLERANCE=±0.03mm)

SPECIFICATIONS:

1. ELECTRICAL CHARACTERISTICS:
  - 1-1. CURRENT RATING: 0.5 AMP.
  - 1-2. VOLTAGE RATING: 40V
  - 1-3. INITIAL CONTACT RESISTANCE EXCLUDING CONDUCTOR RESISTANCE: 10mΩ MAX (TARGET DESIGN VALUE). AFTER TEST: Δ30mΩ MAX.
  - 1-4. INSULATION RESISTANCE: 100MΩ MIN. @ 500V DC.
  - 1-5. DIELECTRIC WITHSTANDING VOLTAGE: 500V AC FOR 1 MINUTE.
2. MECHANICAL CHARACTERISTICS:
  - 2-1. INSERTION FORCE: 4.5kgf MAX.
  - 2-2. WITHDRAWAL FORCE: 1.0~4.0kgf.
3. LIFE TEST: 10,000 CYCLES.
4. OTHER GENERAL SPEC. TO REFER "HDMI SERIES SPEC".
5. TO CONFORM TO THE SINGATRON HAZARDOUS SUBSTANCE FREE SPEC.
6. HALOGEN FREE PRODUCT IDENTIFICATION LABEL ON PACKAGING.
7. PACKAGE: SEE "2HE1717 SERIES" PACKAGE.
8. FOR REFLOW SOLDERING LEAD-FREE PROCESS.

PART NO. 2HE1717-000111F

SUFFIX: HALOGEN FREE  
 PACKAGE  
 1: TAPE AND REEL  
 HOUSING COLOR  
 1: BLACK  
 CONTACT PLATING  
 1: GOLD FLASH ON CONTACT AREA,  
 MATTE TIN ON SOLDER AREA.



REV.	EGN NO.	OR DESCRIPTION	REVISED	DATE
A	PDR	RELEASE	IVY-C	2014.03.26

E	INK	-	BLACK
D	MYLAR	2	YELLOW
C	CONTACT	19	COPPER ALLOY SEE PART NO.
B	SHELL	1	STAINLESS STEEL NICKEL PLATED
A	HOUSING	1	HIGH TEMP. THERMO-PLASTIC UL 94V-0 BLACK
NO	DESCRIPTION	QTY	MATERIAL
UNLESS OTHERWISE SPECIFIED TOLERANCES			
DECIMALS: ANGLES:			
X	:±0.5	X	:±2°
X.X	:±0.3	X.X	:±1'
X.XX	:±0.2		
TITLE: HDMI A TYPE FEMALE, DIP TYPE, CH=0.525mm			
DWG: W-C 2014.03.26 PART NO. 2HE1717-000111F			
CHKD: SCALE:3.3:1 UNIT: mm			
APVD: ANGELE2014.03.26 SIZE: A3 SHEET: 1 OF 1 REV: A			
CUSTOMER COPY			

Singatron Enterprise Co., Ltd.  
 信亨企業股份有限公司